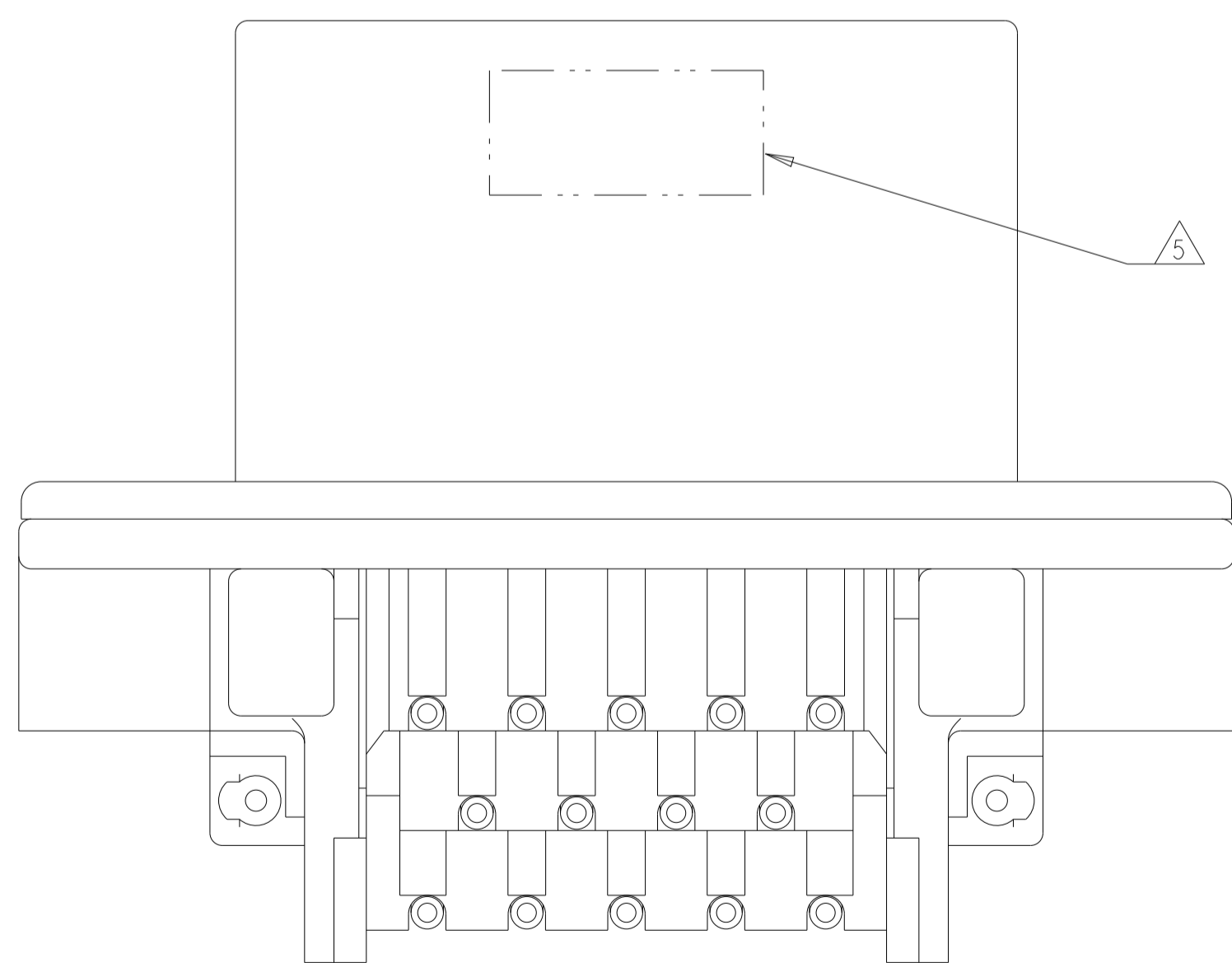
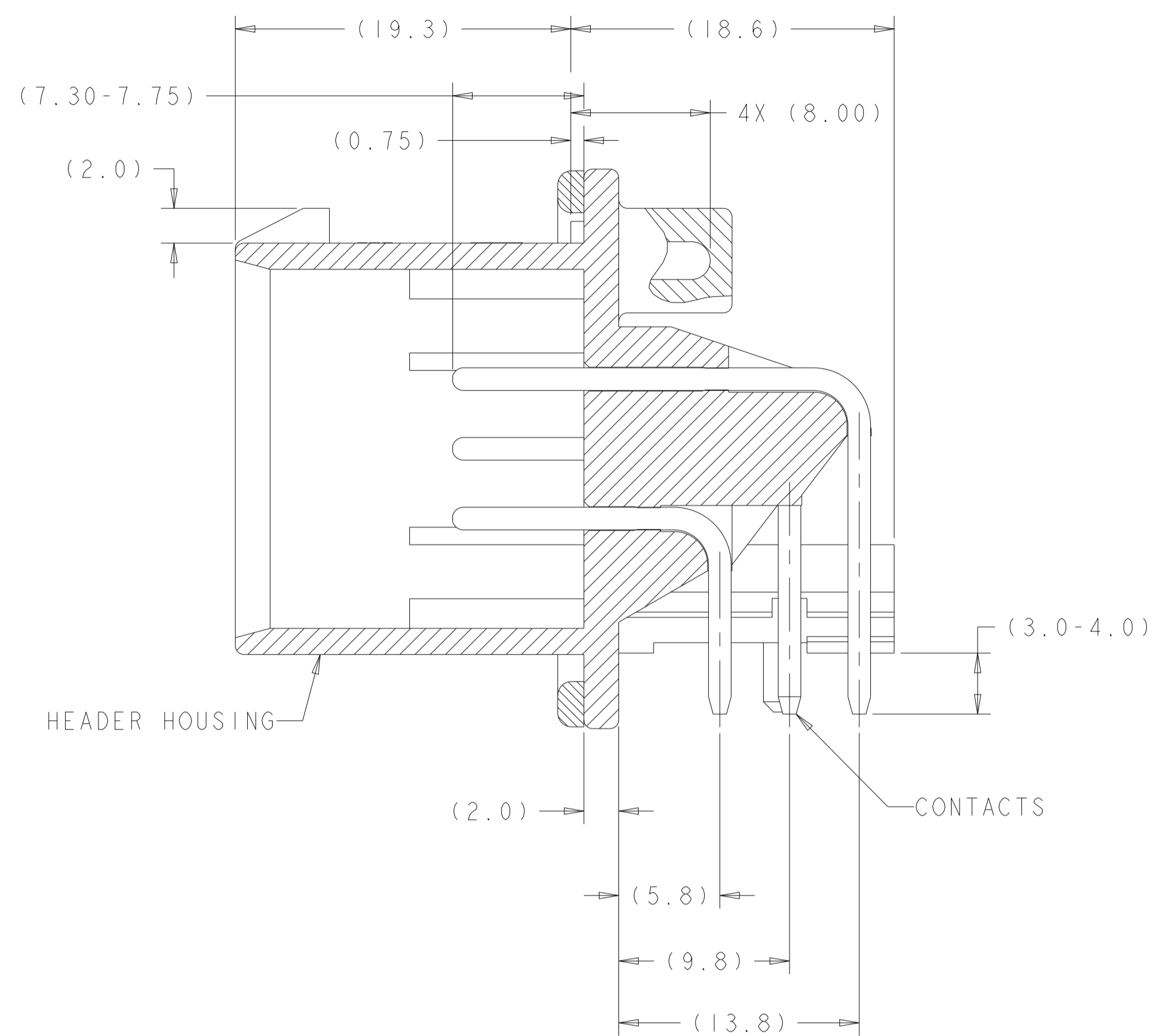
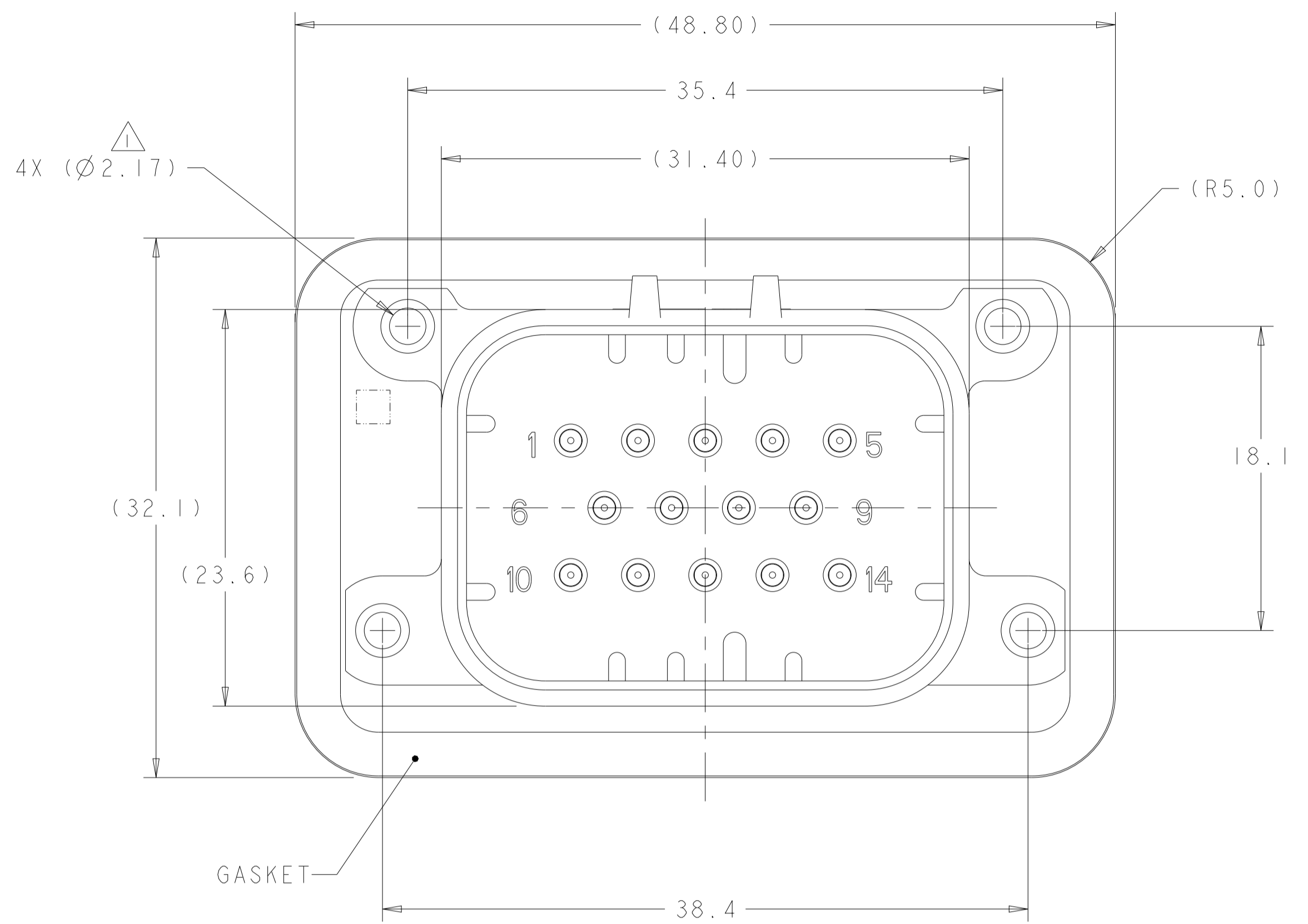


REVISIONS				
P	LTN	DESCRIPTION	DATE	APPV
B10		REVISED PER PCN E-20-016603	24NOV2020	PN DS
B11		REV PER ECO-21-001365	29JAN2021	DS DS
B12		REVISED PER ECR-24-216938	16SEP2024	DK CB
C		ECR-25-236813	30JUN2025	DK EC



⚠ SUGGESTED MOUNTING SCREW SIZE IS $\varnothing 2.50\text{mm}$ [APPROX. 0.099 INCH] SELF TAPPING THREAD FORMING SCREW, SUCH AS DELTA PT, TO BE DRIVEN AT 0.6-0.8 N-m. THE CUSTOMER MUST TEST THE SCREW SIZE AND TYPE IN ORDER TO VERIFY THEIR SELECTION BEFORE USE IN APPLICATION

TO VALIDATE HEADER MOUNTING PERFORMANCE, TE CONNECTIVITY WILL CONTINUE TO UTILIZE THE FOLLOWING TORQUE VALIDATION PROCESS ACCORDING TO APPLICATION SPEC 114-16016:
 MOUNTING PANEL THICKNESS - 4.75 +/- 0.15mm
 SCREW - 2.5X12mm DELTA PT

CUSTOMERS MAY VALIDATE OTHER SCREW SIZES AND TYPES AT THEIR OWN DISCRETION

⚠ HOUSING COLORS ARE MECHANICALLY KEYED TO MATE ONLY WITH IDENTICALLY COLORED PLUG ASSEMBLIES.

3. HEADER MATES TO PLUG ASSEMBLY 776273 WHICH USES REELED TERMINAL 770520 OR LOOSE PIECE TERMINAL 770854

⚠ MATERIAL: GASKET - SILICONE
 HEADER HOUSING - GLASS FILLED PBT
 PINS - TIN OR GOLD PLATED BRASS

⚠ DATE CODE TO BE BRANDED ON THIS SURFACE PER TE SPEC 102-60. USE 5 DIGIT CODE: FIRST 2 DIGITS = YEAR, SECOND 2 DIGITS = WEEK, LAST DIGIT = DAY.

776267-1 & 1-776267-1 SHOWN

HEADER HOUSING COLOR	DESCRIPTION	PART NUMBER
BLUE	GOLD PLATED	1-776267-5
GRAY	GOLD PLATED	1-776267-4
NATURAL	GOLD PLATED	1-776267-2
BLACK	GOLD PLATED	1-776267-1
BLUE	TIN PLATED	776267-5
GRAY	TIN PLATED	776267-4
NATURAL	TIN PLATED	776267-2
BLACK	TIN PLATED	776267-1

THIS DRAWING IS A CONTROLLED DOCUMENT.

OWN: D. DRUMMOND 18AUG2010
 CHK: D. STRAUSSER 18AUG2010
 APVD: D. STRAUSSER 18AUG2010

DIMENSIONS: mm
 TOLERANCES UNLESS OTHERWISE SPECIFIED:
 0 PLC ±0.2
 1 PLC ±0.13
 2 PLC ±0.13
 3 PLC ±0.13
 4 PLC ±0.13
 ANGLES ±5°
 FINISH

MATERIAL: 4

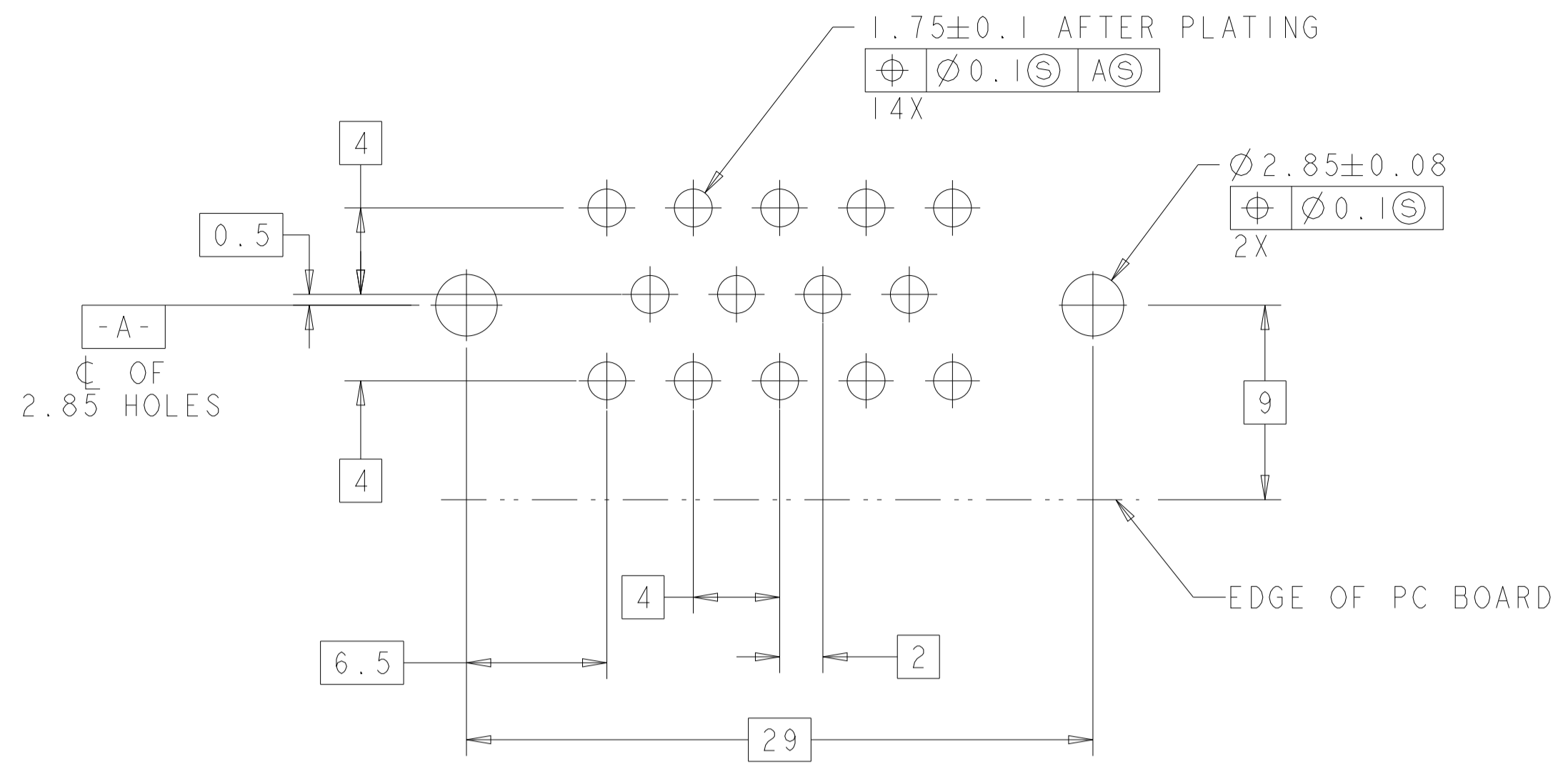
TE Connectivity
 HEADER ASSEMBLY, 14 POSITION, RIGHT ANGLE, AMPSEAL

PRODUCT SPEC: 108-1329
 APPLICATION SPEC: 114-16016
 WEIGHT: 21.10g
 CUSTOMER DRAWING

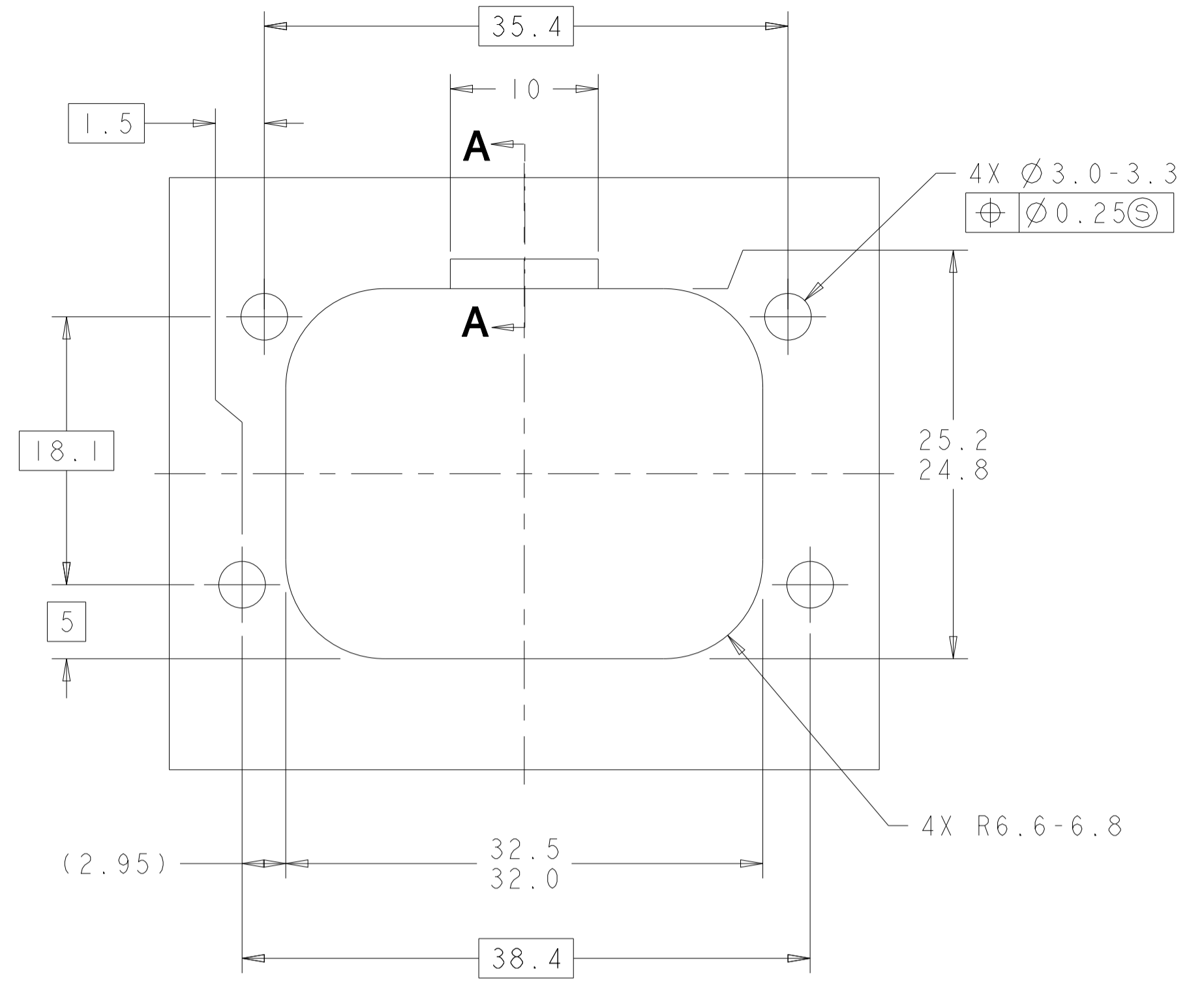
SIZE: A1
 CAGE CODE: 00779
 DRAWING NO: 776267
 RESTRICTED TO: -

SCALE: 4:1
 SHEET: 1 OF 2
 REV: C

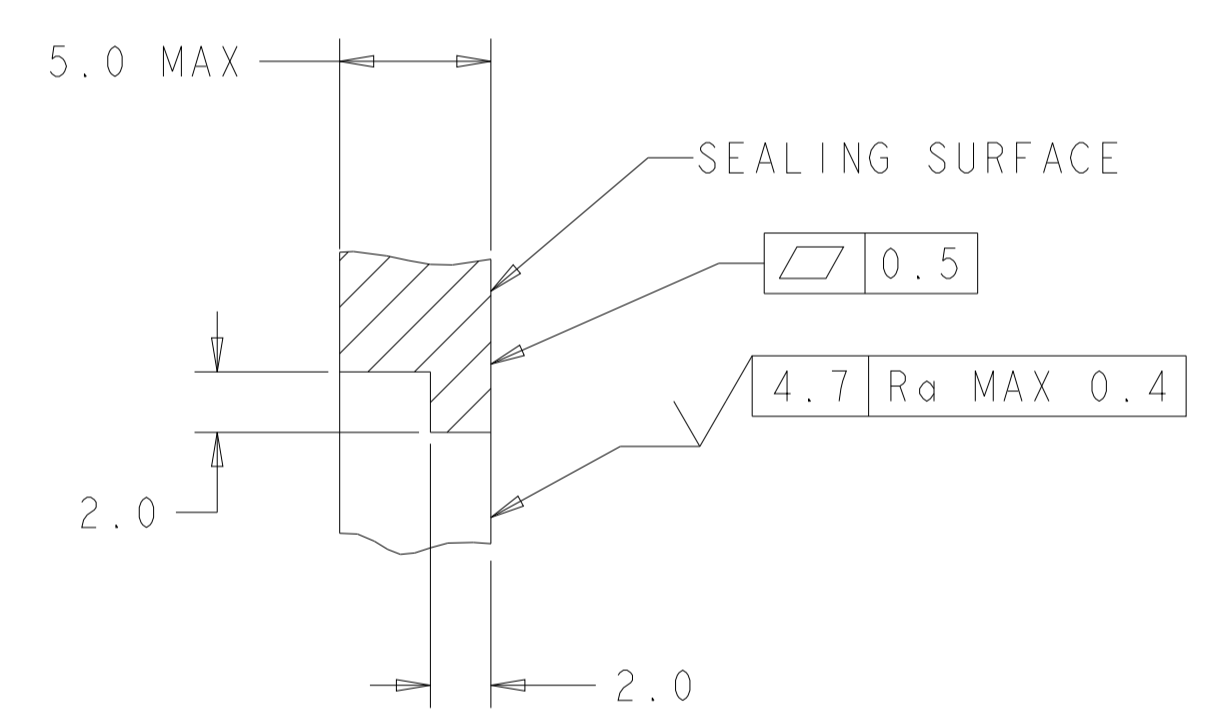
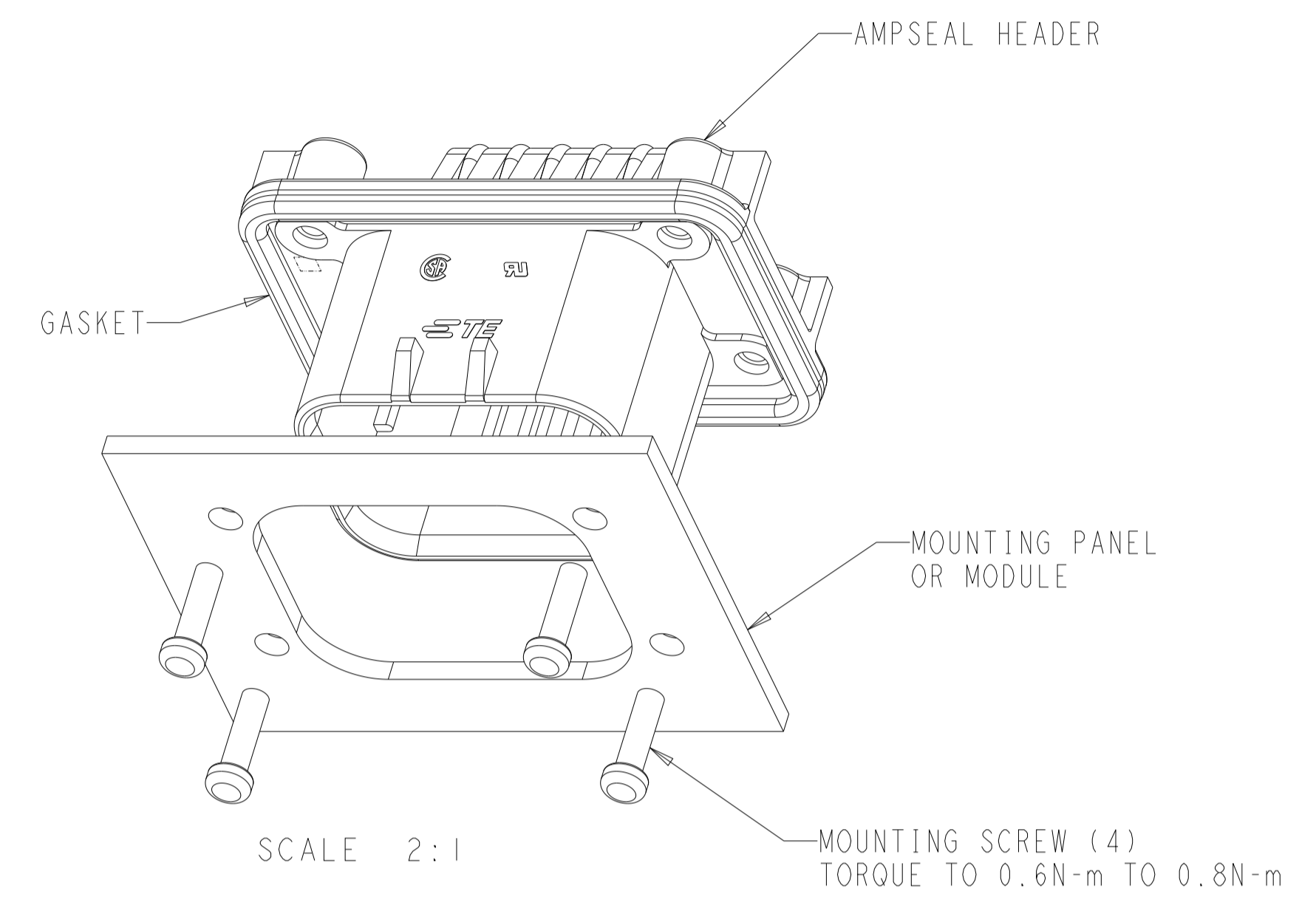
REVISIONS				
P	LTN	DESCRIPTION	DATE	APVD
-	-	SEE SHEET 1	-	-



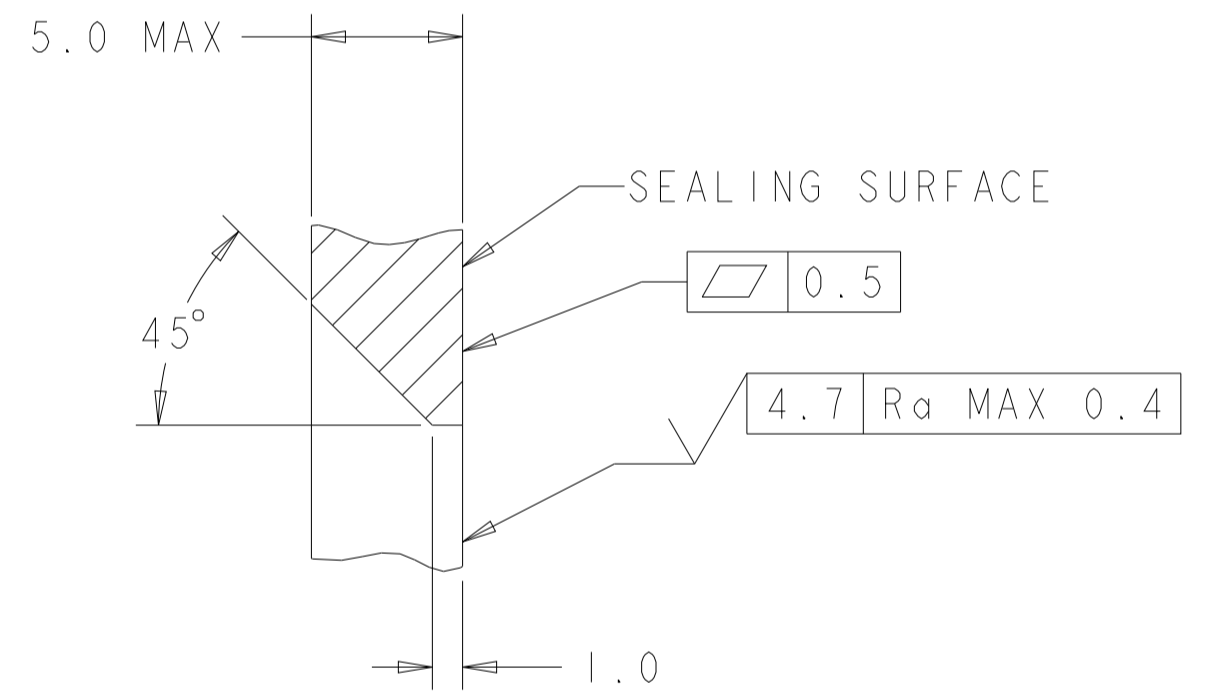
RECOMMENDED PC BOARD LAYOUT FOR 1.57 PC BOARD



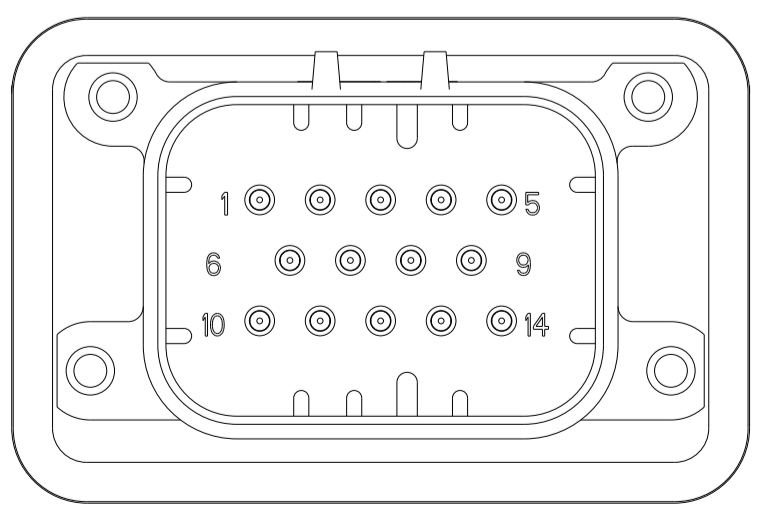
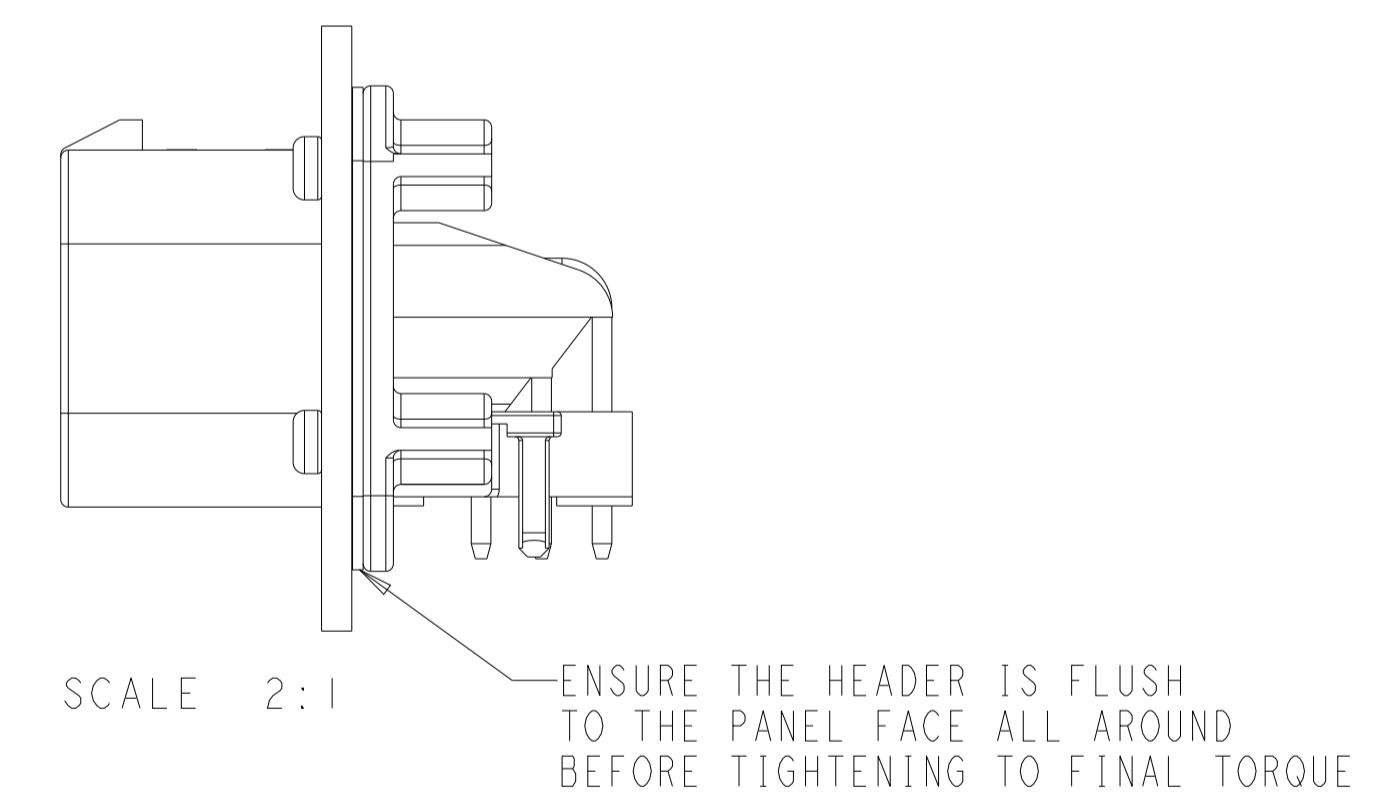
RECOMMENDED MOUNTING HOLE LAYOUT FOR 5.0 MAX THICK PANEL



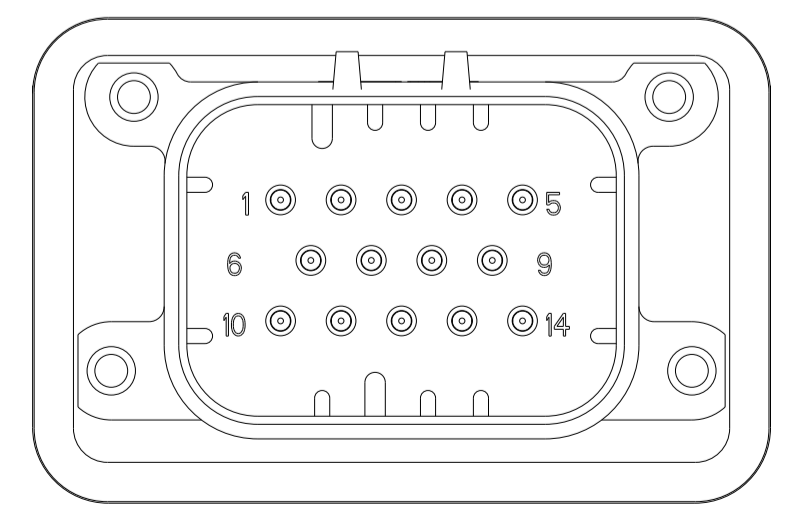
SECTION A-A
 OPTIONAL CONSTRUCTION IF THICKNESS IS GREATER THEN 2.0



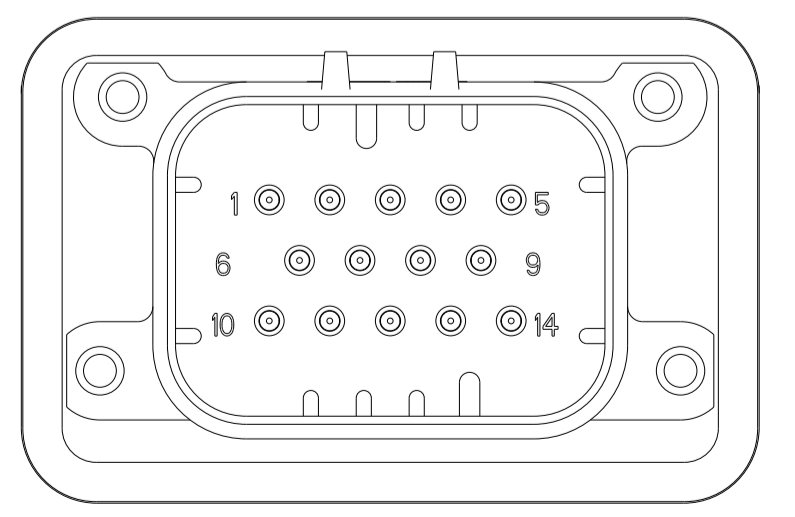
SECTION A-A
 OPTIONAL CONSTRUCTION IF THICKNESS IS GREATER THEN 2.0



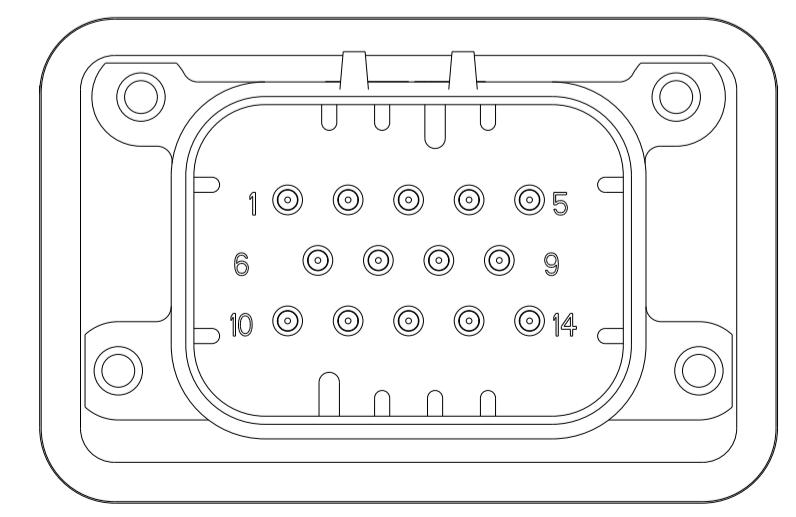
776267-1 & 1-776267-1
 KEY LOCATION
 SCALE 2:1



776267-2 & 1-776267-2
 KEY LOCATION
 SCALE 2:1



776267-4 & 1-776267-4
 KEY LOCATION
 SCALE 2:1



776267-5 & 1-776267-5
 KEY LOCATION
 SCALE 2:1

THIS DRAWING IS A CONTROLLED DOCUMENT.		OWN: D. DRUMMOND 18AUG2010	TE Connectivity	
DIMENSIONS: mm		CHK: D. STRAUSSER 18AUG2010	NAME: HEADER ASSEMBLY, 14 POSITION, RIGHT ANGLE, AMPSEAL	
TOLERANCES UNLESS OTHERWISE SPECIFIED:		APVD: D. STRAUSSER 18AUG2010	SIZE: CAGE CODE: DRAWING NO: RESTRICTED TO	
0 PLC	±0.2	PRODUCT SPEC	A100779C=776267	
2 PLC	±0.13	APPLICATION SPEC	SCALE: 4:1 SHEET 2 OF 2 REV C	
3 PLC	±0.13	108-1329		
4 PLC	±0.13	114-16016		
ANGLES	±5°	WEIGHT: 21.10		
MATERIAL:		CUSTOMER DRAWING		