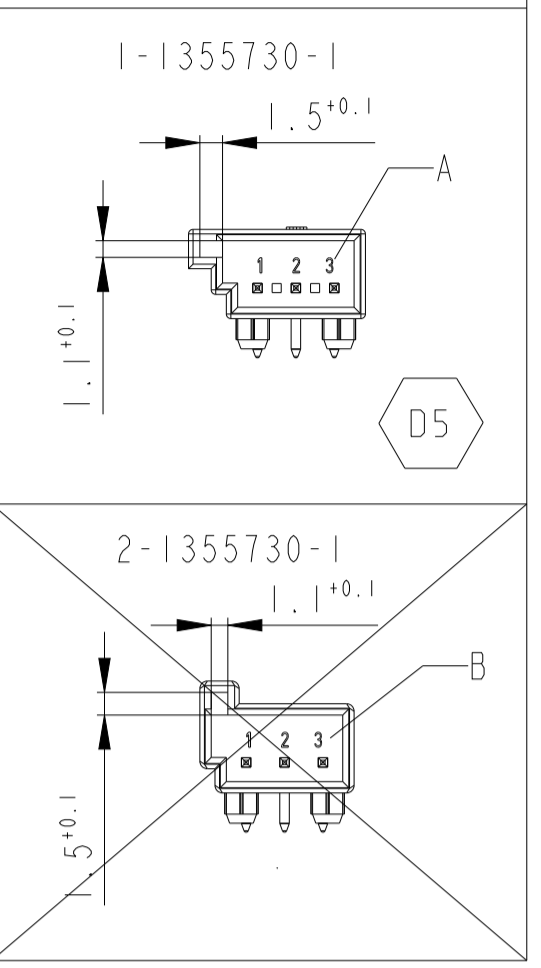
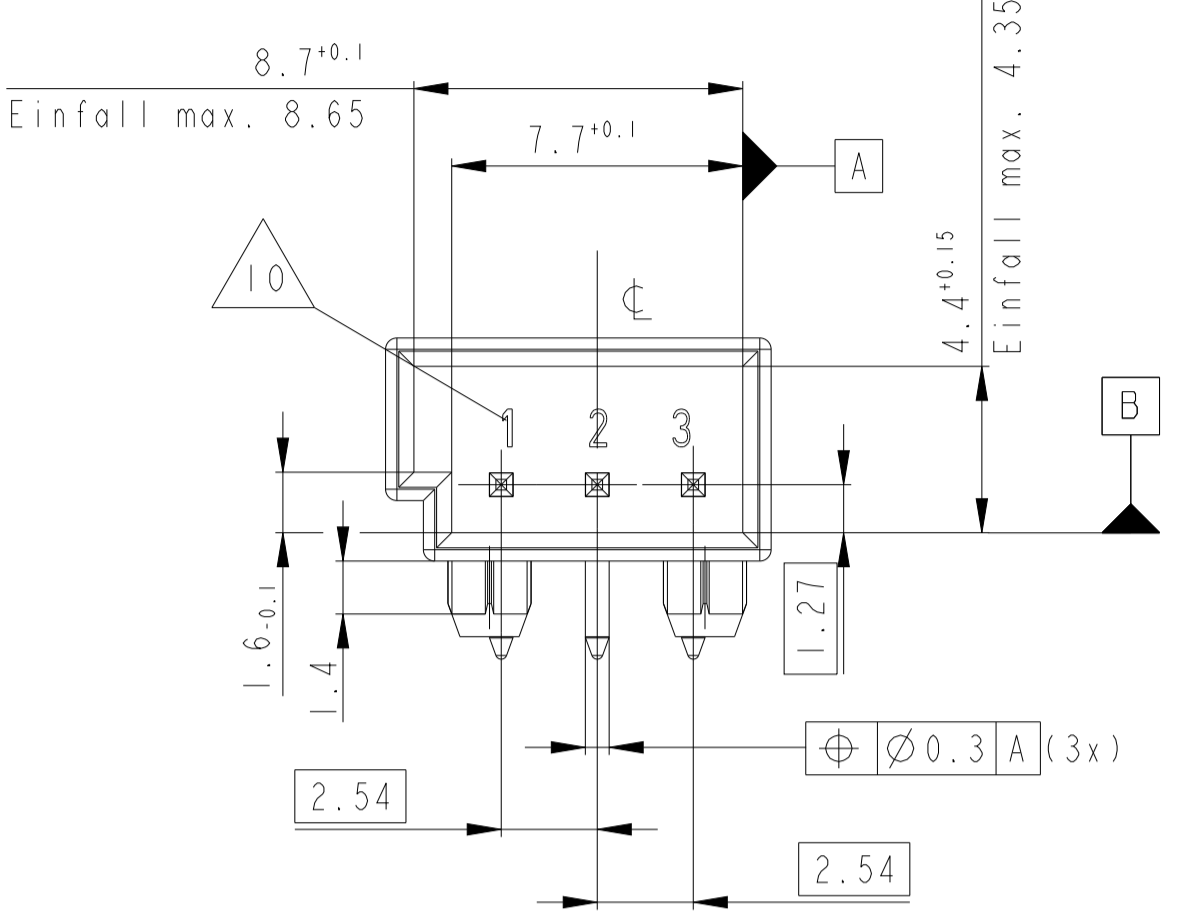
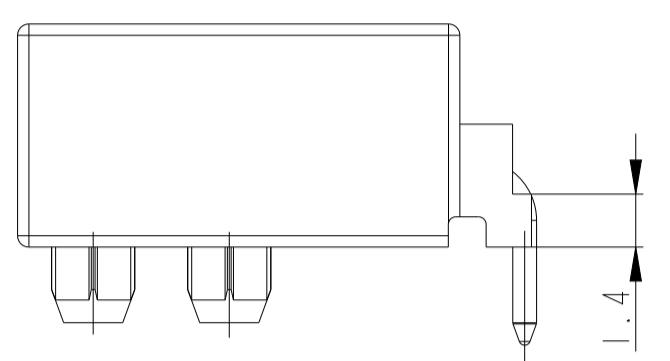
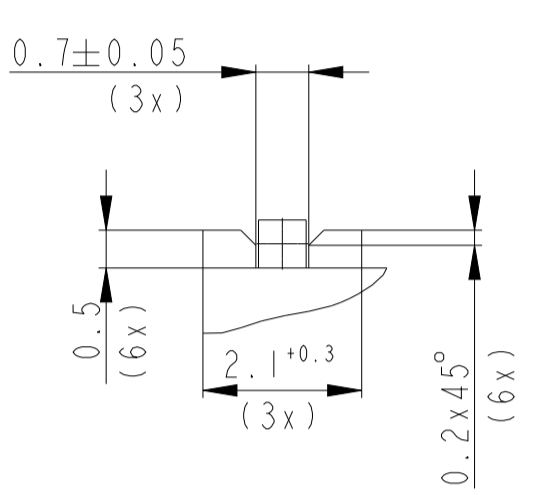


CODINGS  
Kodierungen

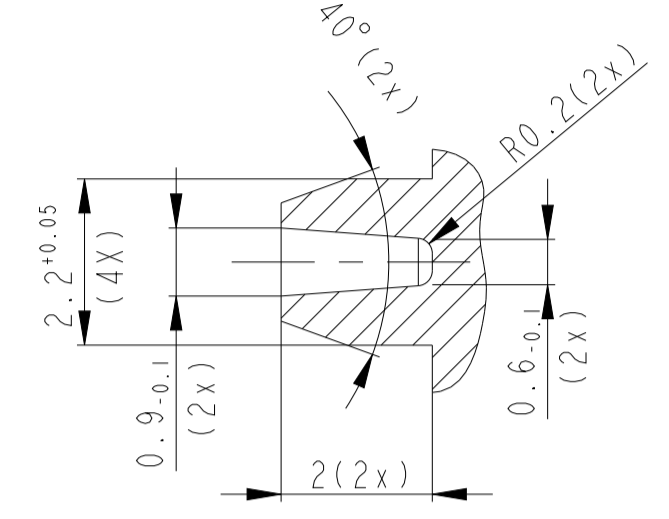
SCALE 2:1  
Maßstab



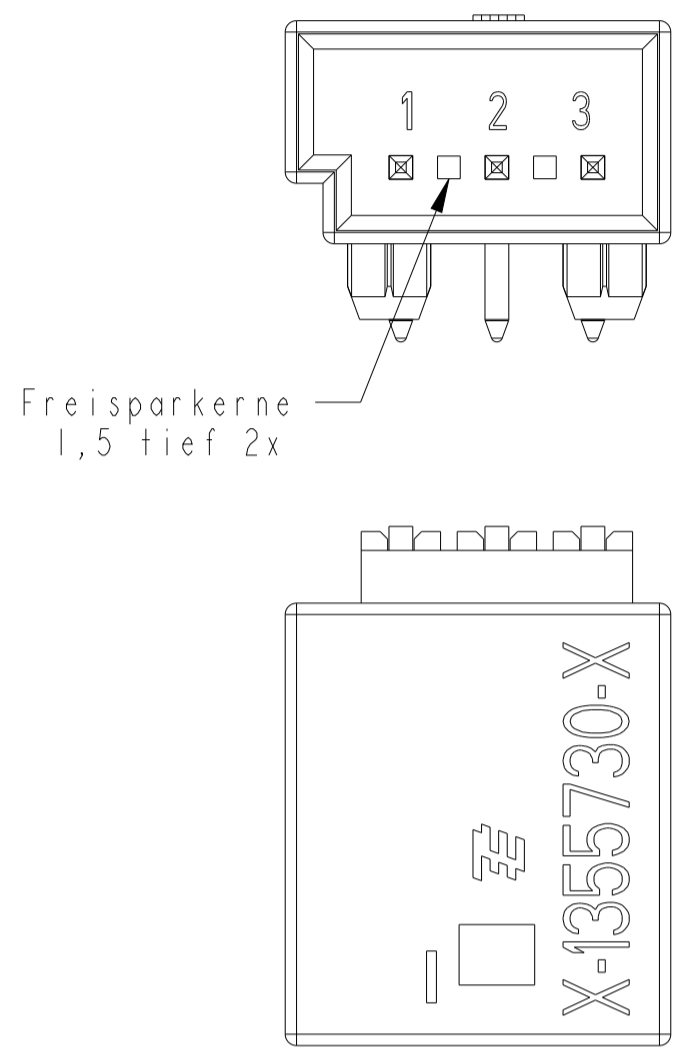
DETAIL Y  
Einzelheit  
SCALE 10:1  
Maßstab



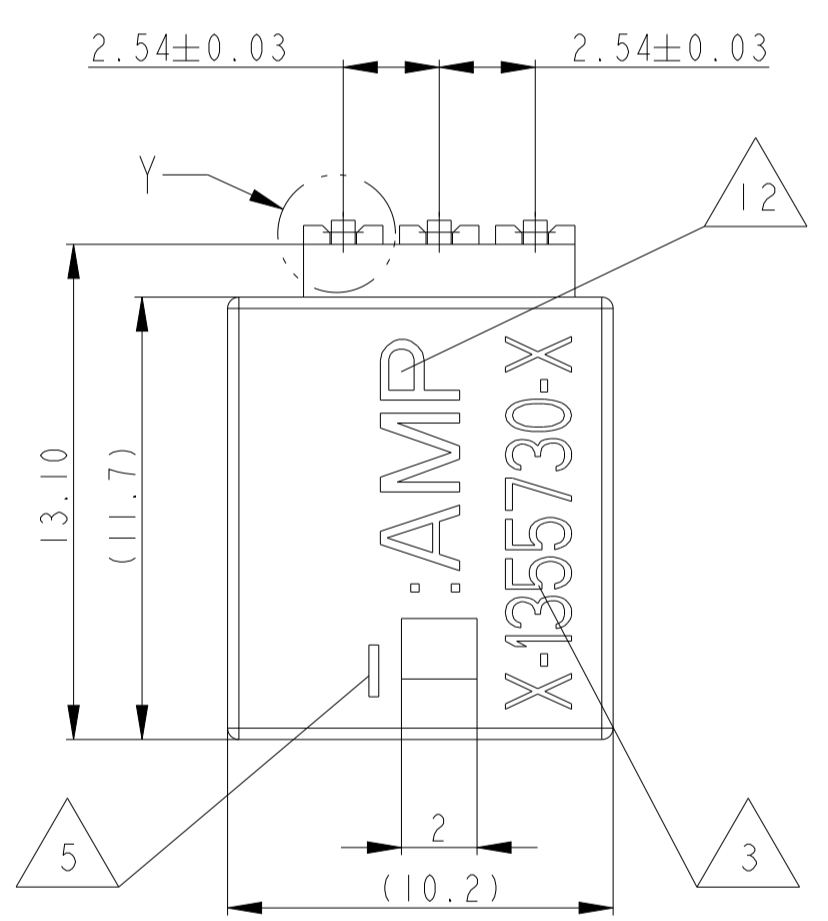
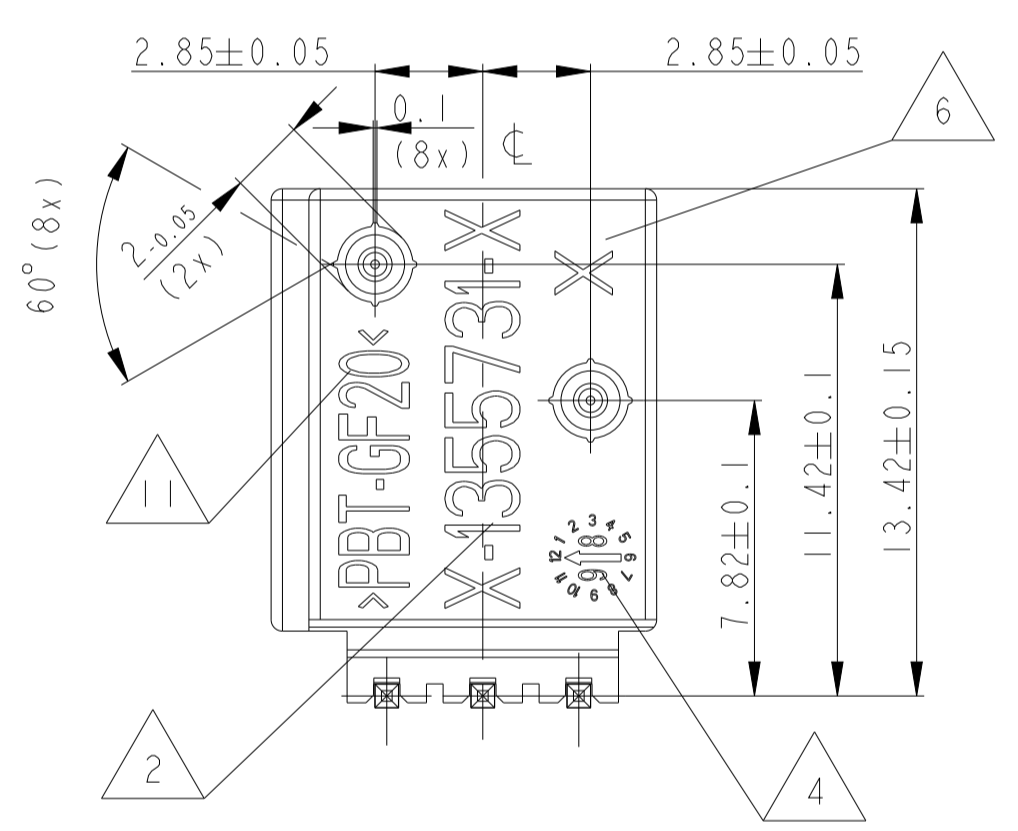
DETAIL W  
Einzelheit  
SCALE 10:1  
Maßstab



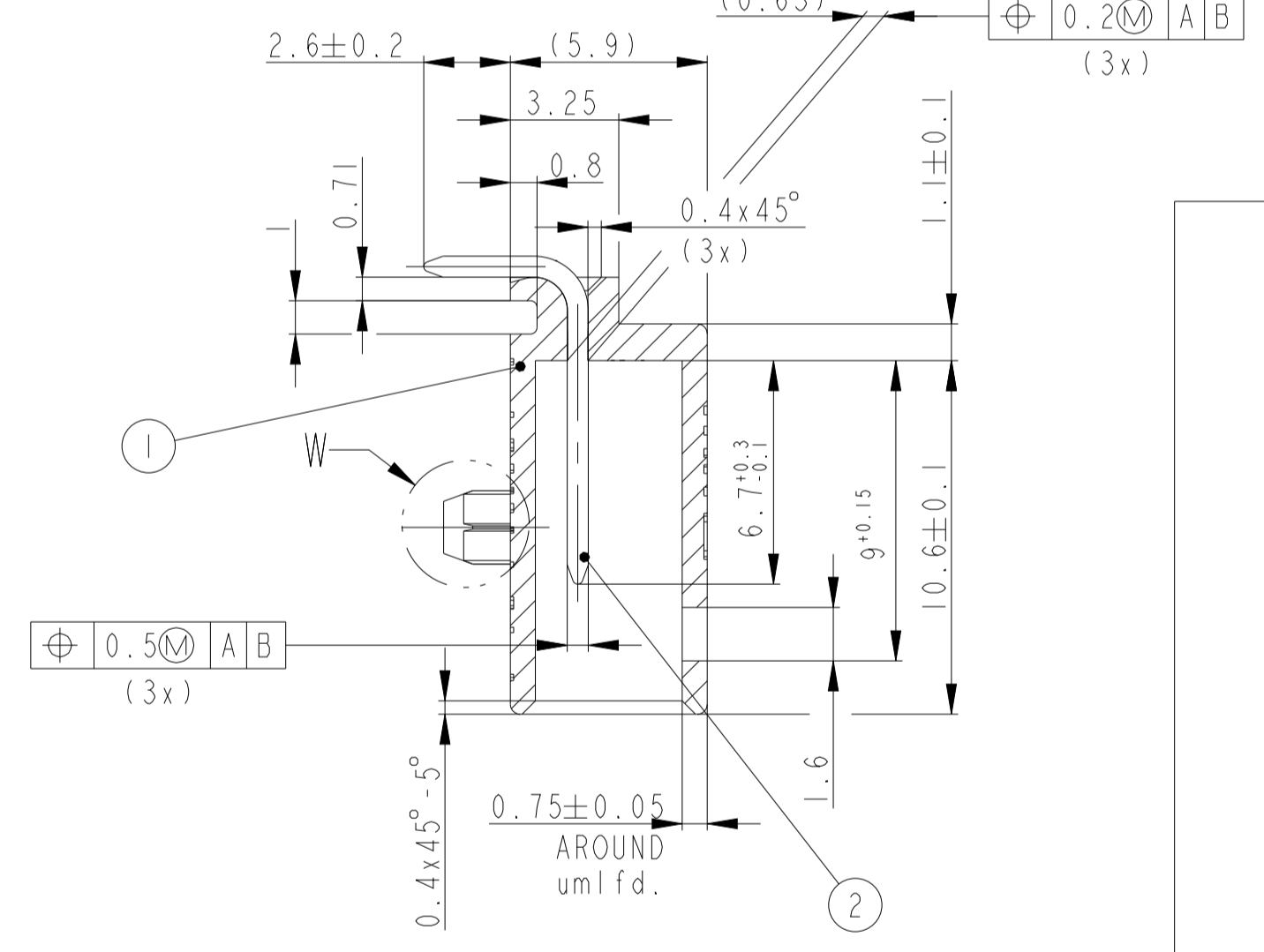
optionales Design  
für neues 16-fach Wkzg.  
Nest 4.1 - 4.16  
Rev. D



VIEW X  
Ansicht X



SECTION A-A  
Schnitt



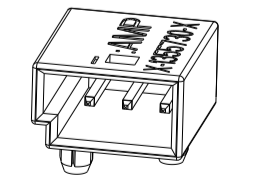
NOTES  
Bemerkungen

- 1 ALL RADII R0.2 EXCEPT AS NOTED  
Nicht bemessene Radien R0.2
- 2 TE-PART NO.:  
TE-Teile Nr.:
- 3 TE-ASSY-NO.:  
TE-Assy Nr.:
- 4 PRODUCTION-DATE WITH DATE INSERT, Ø3  
Produktionsdatum mit Datumsstempel, Ø3
- 5 AREA FOR CAVITY MARKING  
Platz für Nestmarkierung
- 6 REVISION ACCORDING TO PLASTIC PART-REV.  
Änderungsindex gemäss Kunststoffteil-Rev.
- 7 PULL-OUT FORCE PER PIN > 25 N  
Auszugskraft pro Steckerstift > 25 N
- 8 :
- 9 LETTER INSERTS ON CHOICE OF MANUFACTURER  
Schriften nach Wahl des Herstellers
- 10 CAVITY IDENTIFICATION  
Kammerbezeichnung
- 11 MATERIAL IDENTIFICATION  
Materialkennzeichen
- 12 AMP-LOGO  
AMP-Logo
- 13 SPECIFICATION OF PIN SEE 114-94201  
Ausführungsvorschrift Stift 114-94201
- 14 Material PBT GF20 POCAN B3225

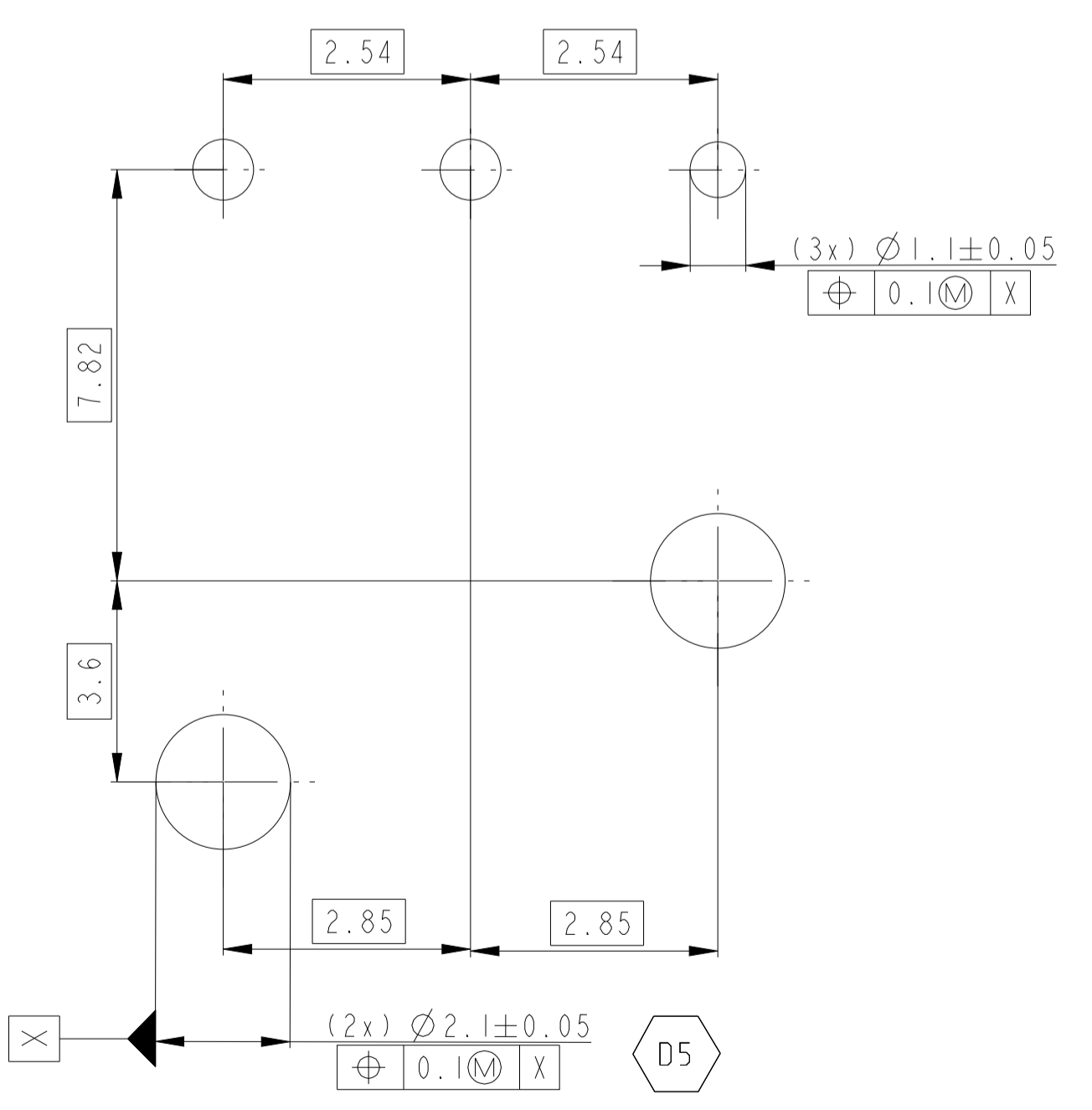
CODING E AS SHOWN  
Kodierung E wie gezeigt

- 1-1355730-1 SUITABLE FOR SOCKET HOUSING 968705-1 AND 1-968705-1
- 1-1355730-1 SUITABLE FOR SOCKET HOUSING 1-1718346-1 AND 1-1718346-3
- 5-1355730-1 SUITABLE FOR SOCKET HOUSING 968705-9
- 5-1355730-1 SUITABLE FOR SOCKET HOUSING 9-1718346-1
- 1-1355730-1 PASSENDES GEGENSTUECK 968705-1 UND 1-968705-1
- 1-1355730-1 PASSENDES GEGENSTUECK 1-1718346-1 UND 1-1718346-3
- 5-1355730-1 PASSENDES GEGENSTUECK 968705-9
- 5-1355730-1 PASSENDES GEGENSTUECK 9-1718346-1

SCALE 2:1  
Maßstab



RECOMMENDED PCB LAY-OUT  
empfohlenes Leiterplatten -Layout  
(NOT TO SCALE)



FOR OPTIMAL BOARD RETENTION Ø2.15±0.05 OR Ø2.2±0.05  
FOR REDUCED FORCE DURING PCB INSERTION BUT REDUCED BOARD RETENTION

AMP/TE ASS'Y NO	REV neues Wkzg. altes Wkzg.	REV	CODING KODIERUNG	DESCRIPTION BENENNUNG	SURFACE OBERFLÄCHE	MATERIAL	PCS.	ITEM NO
5-1355730-1	D	--	E	MOS PIN	vorverzinkt	Cu Sn6	3	2
				MOS PIN HOUSING	BLACK/schwarz	PBT GF 20	1	1
2-1355730-1	A	B	B	MOS PIN	vorverzinkt	Cu Sn6	3	2
				MOS PIN HOUSING	NATURAL/natur	PBT GF 20	1	1
1-1355730-1		A	A	MOS PIN	vorverzinkt	Cu Sn6	3	2
				MOS PIN HOUSING	BLACK/schwarz	PBT GF 20	1	1

THIS DRAWING IS A CONTROLLED DOCUMENT. DIESES ZEICHNUNGSDOKUMENT WIRD DURCH AMP INCORPORATED KONTROLLIERT. REVISIONEN, DIE SICH TECHNISCHER FORTSCHRITT, LEISTUNGSVERBESSERUNG ODER ANDEREN GRÜNDEN ERGEBEN, SIND UNVERBODEN. DIMENSIONS: MILLIMETERS UNLESS OTHERWISE SPECIFIED: ALLGEMEIN: MILLIMETER		DATE: 09AUG99		DRAWING NO: 1355730-1		SHEET 1 OF 1	
DWG: M. SCHWAEGER	CHK: M. SCHWAEGER	APVD: M. SCHWAEGER	DATE: 09AUG99	DRAWING NO: 1355730-1	SHEET 1 OF 1	REV: D5	RESTRICTED TO KURZ FÜR
PRODUCT SPEC: MOS PIN HEADER, 3POS. MOS Stiftwanne 3pol.		APPLICATION SPEC: MOS PIN HOUSING		SIZE: A1		SCALE: 5:1	
WEIGHT: 0.0779g		CUSTOMER DRAWING: /KUNDENZEICHNUNG		SCALE: 5:1		SHEET 1 OF 1	