

PRODUCT NUMBER
93690-YXX-XXLF

PLATING, SEE TABLE
(AS AVAILABLE)

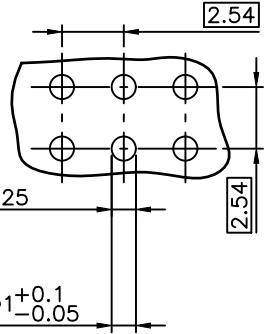
LEAD FREE
SEE NOTE 6 & 7

PIN STYLE, SEE TABLE
(AS AVAILABLE)

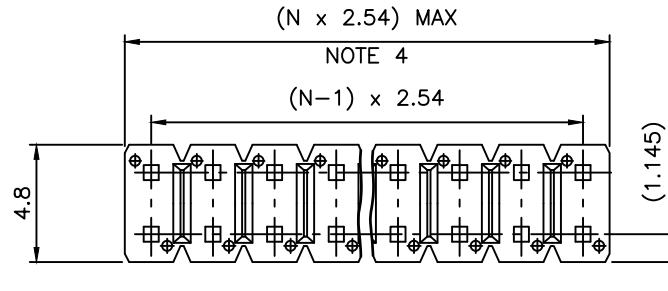
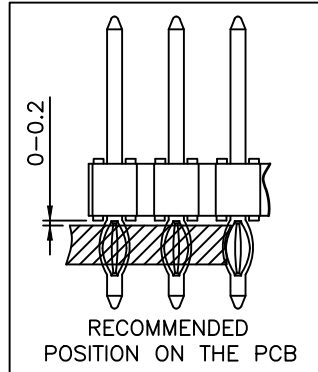
TOTAL NB OF POS
04 TO 72

EXTENDED RANGE

- TOOLING FEASIBILITY CONFIRMED
- SAMPLES ON DEMAND
- AVAILABILITY ON DEMAND

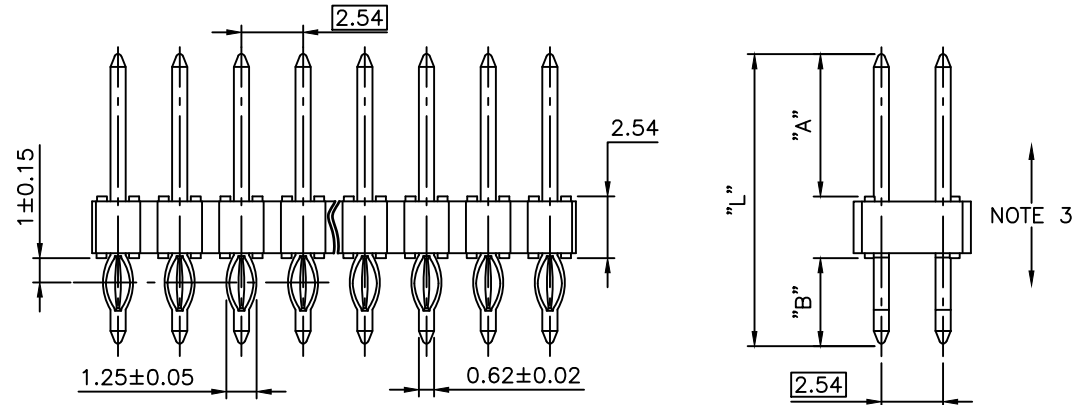


PIN STYLE	DIM "A" REF	DIM "B" ±0.3	DIM "L" ±0.15
01	7.50	4.50	14.78
02	10.14	4.50	17.40
03	5.80	4.50	12.83
04	14.80	4.75	22.15
05	8.30	4.50	15.44
06	6.80	3.60	12.90
07	6.70	3.40	12.62
08	5.20	3.40	11.10
09	8.30	3.60	14.40
10	9.20	3.35	15.09
11	4.00	3.40	9.94



NOTES:

- HOUSING MATERIAL : HIGH TEMPERATURE THERMOPLASTIC. UL94V-0 COLOR: BLACK
- PIN MATERIAL : COPPER ALLOY
- 9N MIN RETENTION IN EITHER DIRECTION
- TO DETERMINE DIMENSIONS :
N = NUMBER OF POSITIONS PER ROW
EXAMPLE : 8 POS PER ROW, N x 2.54 = 20.32mm
- PACKAGING POLYBAGS OR BLIBOX
- LEAD FREE CONNECTOR
- "LF" MEANS THAT THE PRODUCT IS RoHs COMPLIANT THEN MEETS EUROPEAN UNION DIRECTIVES AND OTHER COUNTRY REGULATION AS DESCRIBED IN GS-47-0004
- THIS PART SERIES IS NOT INITIALLY INTENDED FOR AUTOMOTIVE APPLICATIONS. ADDITIONAL FEES ARE CHARGEABLE FOR ANY ADDITIONAL QUALIFICATION AND TEST REPORTS PERFORMED OUTSIDE THE SCOPE OF THE STANDARD PRODUCT SPECIFICATIONS.
- UNLESS OTHERWISE APPROVED BY AMPHENOL, ALL PARTS AND COMPONENTS ARE DESIGNED & BUILT ACCORDING TO AMPHENOL'S SPECIFICATIONS WHICH ARE SUBJECT TO CHANGE WITHOUT NOTICE.



93690-7XX-XXLF	GOLD FLASH OVER 1.27µm Ni MIN	1.0µm TIN OVER 1.27µm Ni MIN
93690-4XX-XXLF	3.05µm TIN OVER 1.27µm Ni MIN	
93690-1XX-XXLF	0.76µm GOLD/GXT OVER 1.27µm Ni MIN	1.0µm TIN OVER 1.27µm Ni MIN
PLATING	CONTACT AREA	PRESS FIT TAIL AREA

mat'l. code		surface		tolerance		projection	product family	
SEE NOTE		ISO 1302	ISO 406	ISO 1101	ISO 1101		BERGSTIK	
Ltr	ecn no	dr	date	tolerances unless otherwise specified		mm	title	
R	B-18988	LMU	14.10.06	angles	linear		HDR PRESS FIT	
S	F-22590	AMA	15.11.23			scale 5:1	DOUBLE ROW	
T	F-47108	DDE	23.01.25				dwg no	
U	F-54513	DDE	25.02.06	dr	L.MULIN	99.06.30	sheet 1 of 1	
V	F-56566	DDE	25.07.17	engr	J.COMPAGNON	99.06.30	size	
				chr	P.NIZZI	99.06.30	93690	
P	B-17404	JCO	14.04.07	appd	J.COMPAGNON	96.05.06	A3	
							type CUSTOMER Drawing	
sheet	revision							
index	sheet							