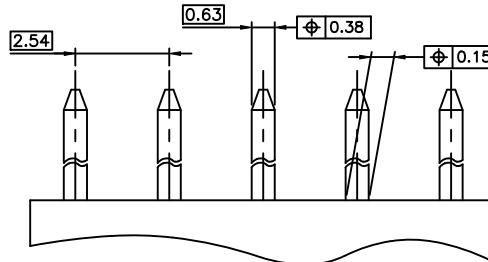


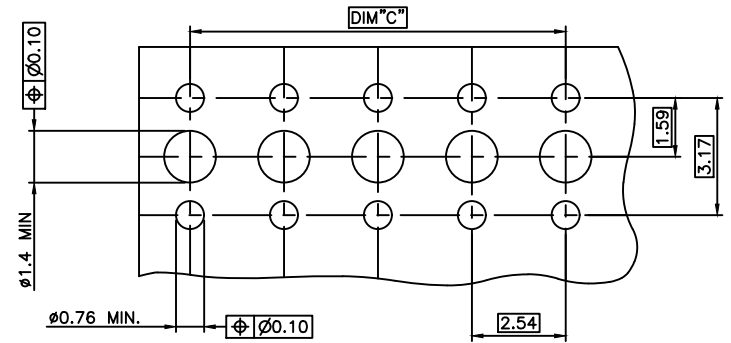
PIN STYLE PRODUCT N°	DIM"C"	DIM"D"	CONTACT PLACED IN CAVITY																					
			1	2	3	4	5	6	7	8	9	10	11	12	13	14	15	16	17	18	19	20	21	22
95200-Y01LF	48.26	50.72	X	X	X					X	X	X	X	X	X	X	X			X	X	X		
95200-Y02LF	7.62	10.08	X		X																			
95200-Y03LF	53.34	55.80	X			X			X			X			X			X		X		X	X	
95200-Y04LF	53.34	55.80	X	X		X	X	X	X	X	X	X	X	X	X	X	X	X	X	X	X	X	X	

RoHS COMPATIBLE, SEE NOTE 3  
 PIN STYLE, SEE TABLE (AS AVAILABLE)  
 PLATING, SEE TABLE (AS AVAILABLE)

**EXTENDED RANGE**  
 - TOOLING FEASIBILITY CONFIRMED  
 - SAMPLES ON DEMAND  
 - AVAILABILITY ON DEMAND



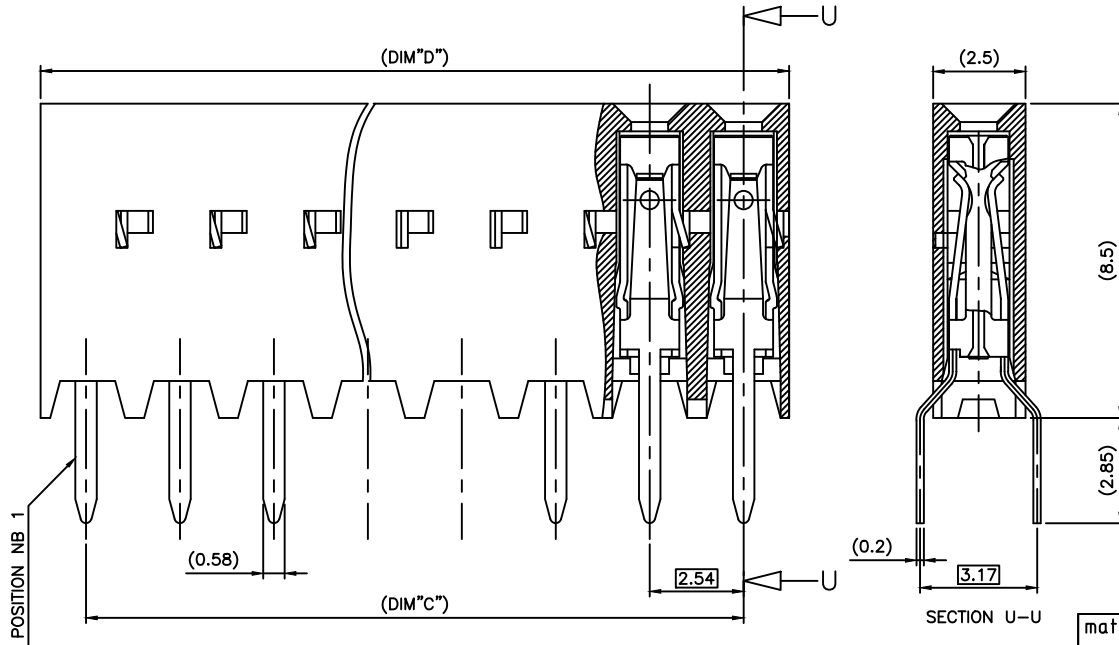
MINIMUM MATING PIN LENGTH: 5mm  
 RECOMMENDED PINS PATTERN



RECOMMENDED HOLE PATTERN

NOTES:

- MATERIAL HOUSING: THERMOPLASTIC POLYESTER, 30% GLASS FILLED, COLOUR BLUE, FLAME RETARDANT: PER UL-94 CATEGORY V0. MATERIAL TERMINAL: PHOSPHORE BRONZE EXTRA HARD.
- CONNECTOR MEANT TO BE USED FOR PC BOARD WITH NON PLATED THROUGH HOLES.
- RoHS COMPATIBLE PRODUCT SPECIFICATIONS
  - PLATING:
    - "LF" MEANS THE PRODUCT IS LEAD-FREE, 2µm MINIMUM MATTE TIN OVER 1.27µm MINIMUM NICKEL UNDERPLATE.
  - MANUFACTURING PROCESS COMPATIBILITY
    - THE HOUSING WILL WITHSTAND EXPOSURE TO 260°C ±5°C SOLDER BATH TEMPERATURE FOR 5 SECONDS IN A WAVE SOLDER APPLICATION WITH A 1.6mm MIN THICK CIRCUIT BOARD.
  - LABELING:
    - MEETS PACKAGING SPECS AS PER GS-14-920
    - LEGAL STATEMENT: SEE GS-47-0004
- THIS PART SERIES IS NOT INITIALLY INTENDED FOR AUTOMOTIVE APPLICATIONS. ADDITIONAL FEES ARE CHARGEABLE FOR ANY ADDITIONAL QUALIFICATION AND TEST REPORTS PERFORMED OUTSIDE THE SCOPE OF THE STANDARD PRODUCT SPECIFICATIONS.
- UNLESS OTHERWISE APPROVED BY AMPHENOL, ALL PARTS AND COMPONENTS ARE DESIGNED & BUILT ACCORDING TO AMPHENOL'S SPECIFICATIONS WHICH ARE SUBJECT TO CHANGE WITHOUT NOTICE.



95200-4XXLF	5 µm Sn	Sn
95200-3XXLF	0.76 µm GOLD	Sn
PLATING CODE	CONTACT AREA	SOLDER TAIL
	PLATING THICKNESS OVER 1.27µm Ni	

mat'l. code		surface		tolerance		projection	product family	
SEE NOTES		ISO 1302 ✓		ISO 406 ISO 1101			DUBOX VCC SR	
Ltr	ecn no	dr	date	tolerances unless otherwise specified			title	
H	F04-0347	DLE	04.11.15	angles	linear	.X ±0.3	OFFSET LEGS	
J	F06-0233	DLE	06.07.13			.XX ±0.13	SELECTED LOADED	
K	F07-0271	LMU	07.12.06	±Z		.XXX ±0.05	scale 5:1	
L	B-19123	LMU	14.10.21	dr	D.LEGRAND	01.12.05	dwg no	
M	B-19232	LMU	14.10.28	enfr	P.NIZZI	01.12.05	sheet 1 of 1 size	
N	F-55261	DDE	25.04.03	chr	D.LEGRAND	01.12.05	95200 A3	
				appd	P.NIZZI	01.12.05	type CUSTOMER Drawing	
sheet index	revision sheet							