

RoHS compliant
by exemption

1731121293	F56M049S245+S	Steel	Tin plated	1	-	-	-
1731120234	F-SGV1/5-K981	Steel	Zinc plated	1	2	1	1
Material Number	FCT Part Number	Material	Surface	Screw (pc.)	Washer (pc.)	Spring washer (pc.)	Nut (pc.)

UNLESS OTHERWISE SPECIFIED DIMENSIONS FOR REFERENCE ONLY
REPLACEMENT FOR DOCUMENT NUMBER: F56M049_D

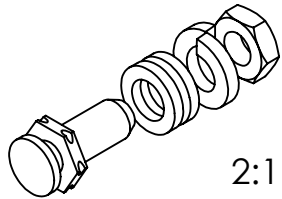
FUNCTIONAL SYMBOLS	THIS DRAWING CONTAINS INFORMATION THAT IS PROPRIETARY TO MOLEX ELECTRONIC TECHNOLOGIES, LLC AND SHOULD NOT BE USED WITHOUT WRITTEN PERMISSION								
	DIMENSION UNITS	SCALE	CURRENT REV DESC:				<p>FCT F-SGV1/5-K981 M3 SLIDE LOCK SCREW</p> <p>PRODUCT CUSTOMER DRAWING</p>		
$\frac{F}{A} = 0$	mm	5:1	EC NO: 731476						
$\frac{F}{E} = 0$	GENERAL TOLERANCES (UNLESS SPECIFIED)		DRWN: MSTEINBRUECK 2022/02/16						
$\frac{F}{P} = 0$	ANGULAR TOL ± °		CHK'D: MTEUBEL 2022/12/12						
DIVISIONAL SYMBOLS	4 PLACES ±		APPR: MTEUBEL 2022/12/12						
	3 PLACES ±		INITIAL REVISION:						
	2 PLACES ±		DRWN: VLOKESHA 2021/09/17						
	1 PLACE ±		APPR: MSTEINBRUECK 2021/12/20						
0 PLACES ±		FIRST ANGLE PROJECTION		DRAWING	SERIES	DOCUMENT NUMBER	DOC TYPE	DOC PART	REVISION
DRAFT WHERE APPLICABLE MUST REMAIN WITHIN DIMENSIONS				A4-SIZE	173112	1731120234	PSD	000	A1
				MATERIAL NUMBER	CUSTOMER	SHEET NUMBER			
				SEE TABLE	GENERAL MARKET	1 OF 1			

Generally twice a material number respectively FCT part number is needed per connector.

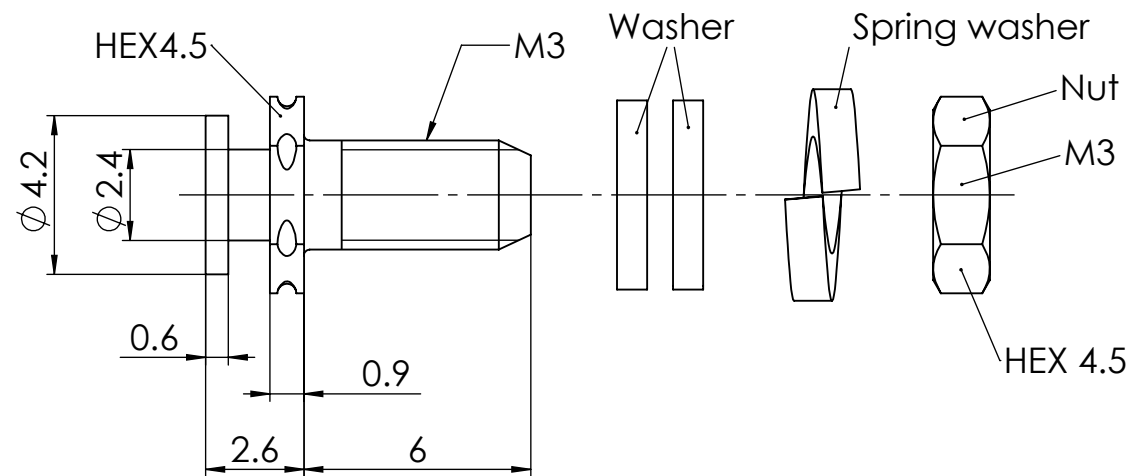
Packaging specification: 1731120003-PK

DOCUMENT STATUS	P1	RELEASE DATE	2022/12/12	08:36:40
-----------------	----	--------------	------------	----------

COMMENT:
 ALL RIGHTS ARE RESERVED BY US FOR THIS DRAWING. WITHOUT OUR PRIOR CONSENT,
 IT MAY NEITHER BE DUBLICATED NOR MADE AVAILABLE TO A THIRD PARTY,
 AND IT ALSO MAY NOT BE IMPROPERLY USED BY TE RECEIVER, OR A THIRD PARTY.



2:1



RoHS compliant
by exemption

1731121293	F56M049S245+S	Steel (Lead free) 2)	tin plated	1	-	-	-
1731121326	F56M049S245-M3+S		tin plated	1	-	-	-
1731120234	F-SGV1/5-K981		zinc plated 1)	1	2	1	1
1731121263	F-SGV1/5-K981-M3	Steel	zinc plated 1)	1	2	1	1
<i>Material Number</i>	<i>FCT Part Number</i>	<i>Material</i>	<i>Surface</i>	<i>Screw (pc.)</i>	<i>Washer (pc.)</i>	<i>Spring Washer (pc.)</i>	<i>Nut (pc.)</i>

Generally twice a material number respectively FCT part number is needed per connector.

Packaging specification: 1731120003-PK

1) With tension control fluid
 2) RoHS compliant

FUNCTIONAL SYMBOLS								THIS DRAWING CONTAINS INFORMATION THAT IS PROPRIETARY TO MOLEX ELECTRONIC TECHNOLOGIES, LLC AND SHOULD NOT BE USED WITHOUT WRITTEN PERMISSION							
DIMENSION UNITS		SCALE		MEASUREMENTS WITHOUT TOLERANCE ACC. TO ISO 2768-mK											
mm		5:1													
CURRENT REVISION				DRWN: DRAWN BY mbisl 03-02-2025				FCT-Corresponding Slide Lock Post F-SGV1/5-K981							
				APPR: APPR BY mteubel 12-02-2025											
INITIAL REVISION				DRWN: DRAWN BY Denzinger 29-10-2002				PRODUCT CUSTOMER DRAWING							
				APPR: APPR BY cpasch 04-05-2005											
REVISION		CH.-NO.		MATERIAL NUMBER				REVISION							
7		24410		see table				7							
REPLACEMENT FOR: 1731121263_Rev.A1 1731120234_Rev.A1				FIRST ANGLE PROJECTION		DRAWING		DOCUMENT NUMBER				CUSTOMER		SHEET NUMBER	
						A4-SIZE		F56M049_D				GENERAL MARKET		1 OF 1	