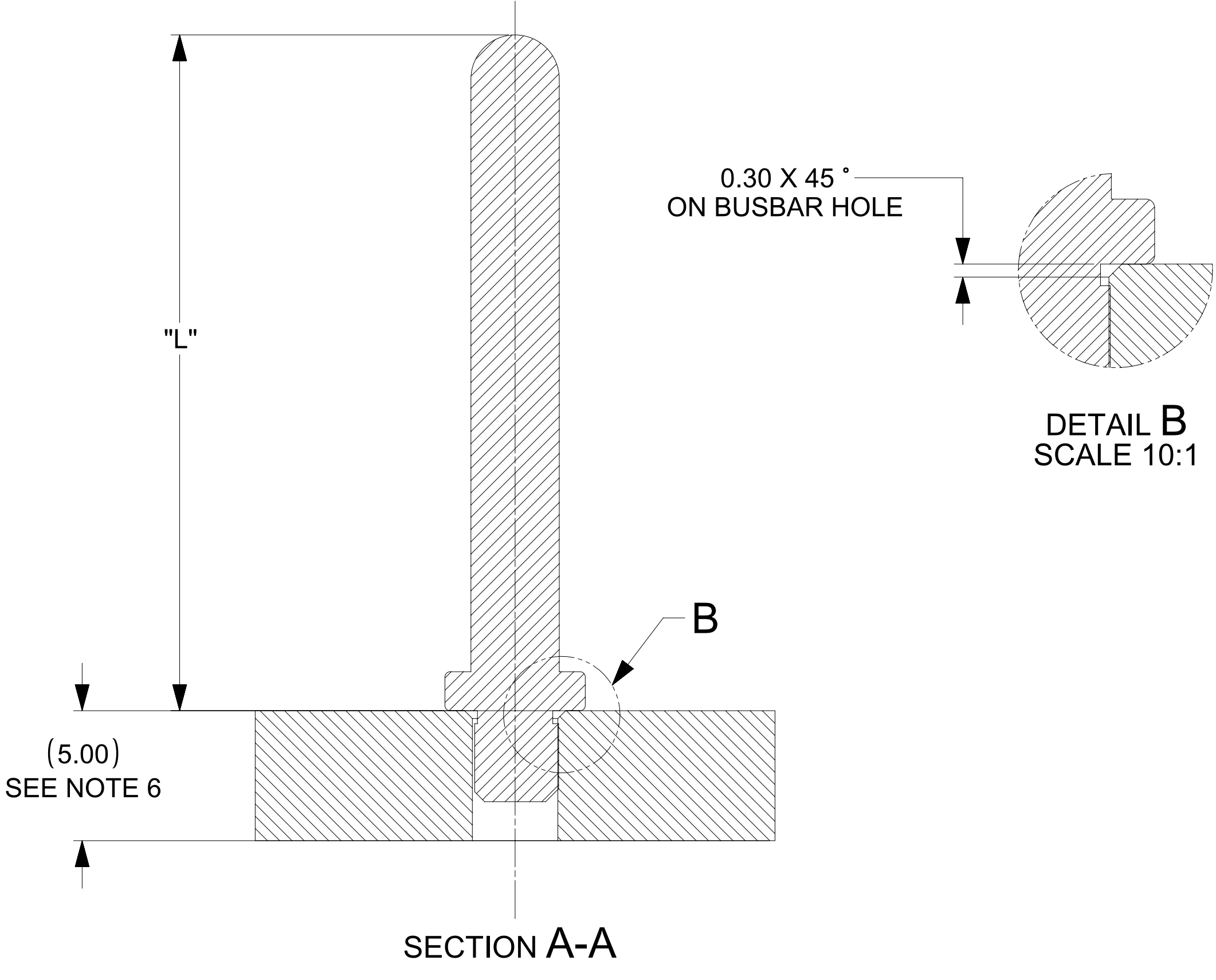
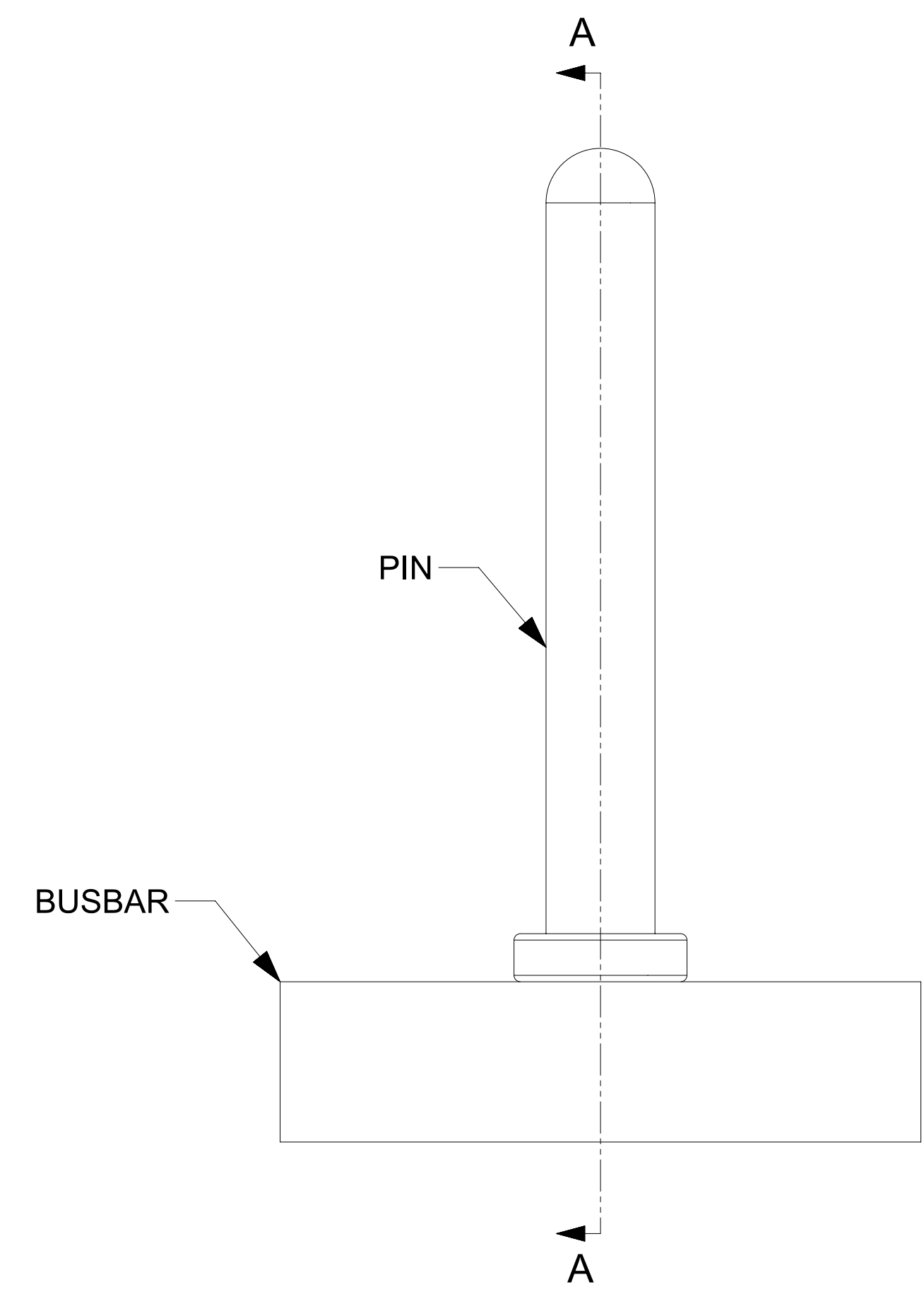
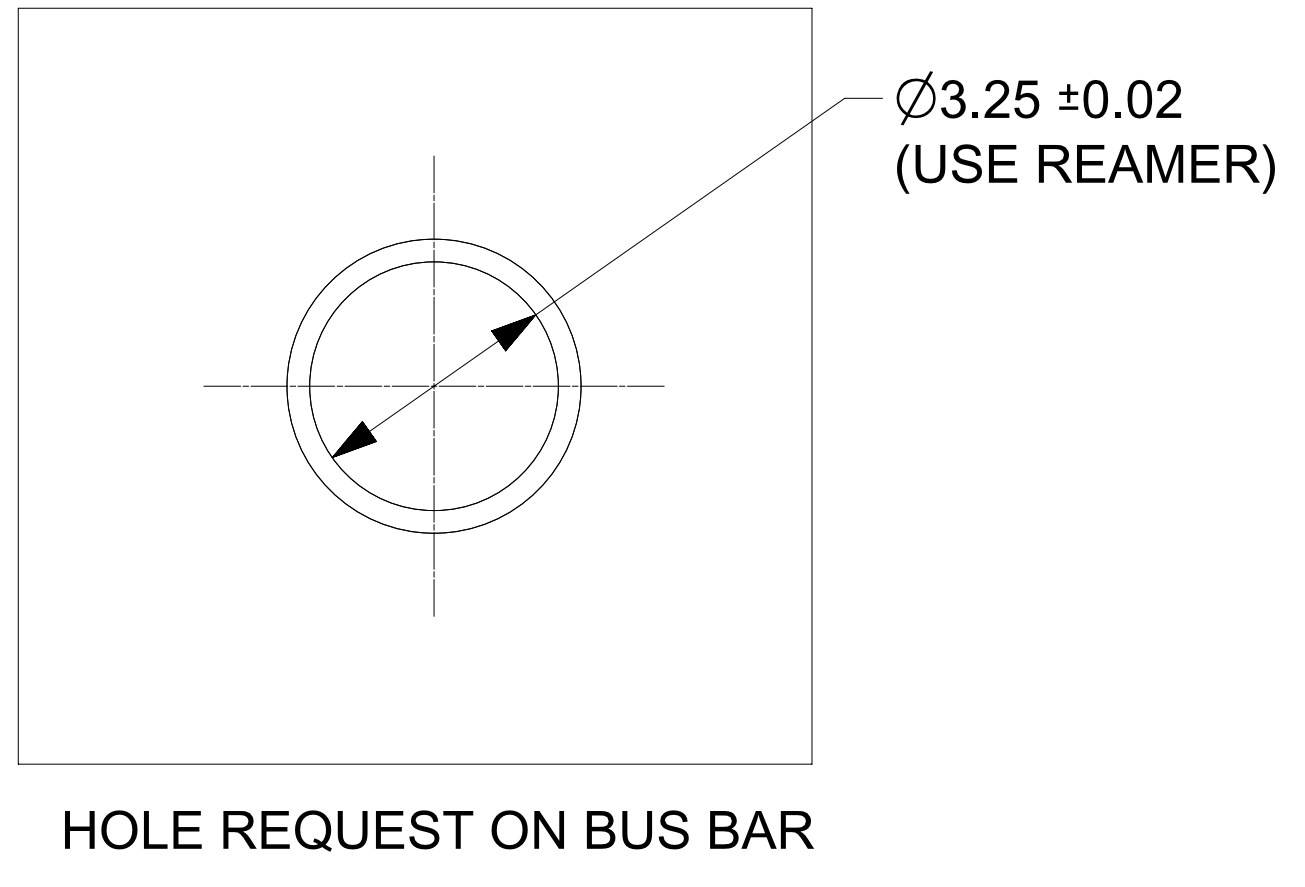
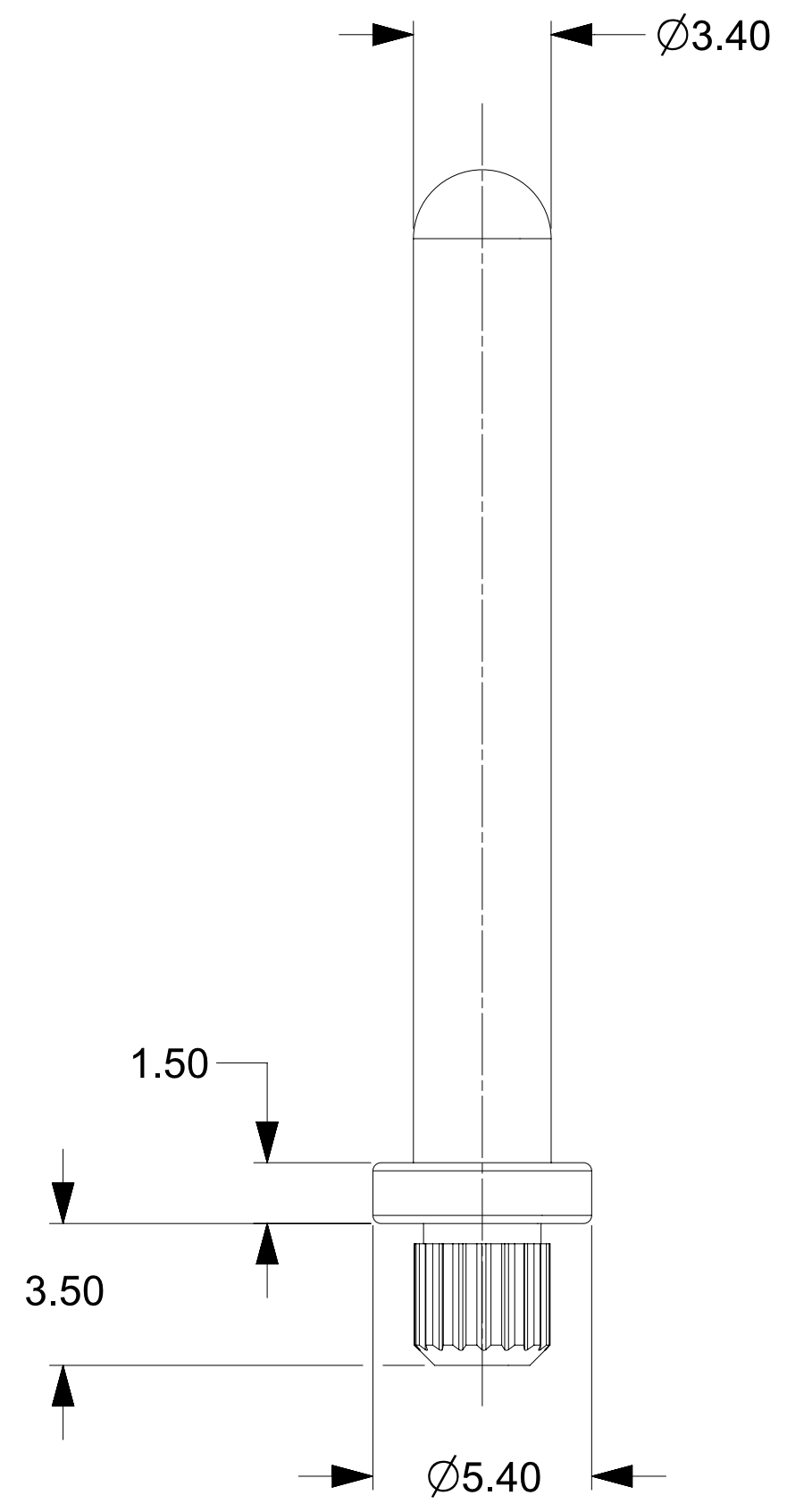
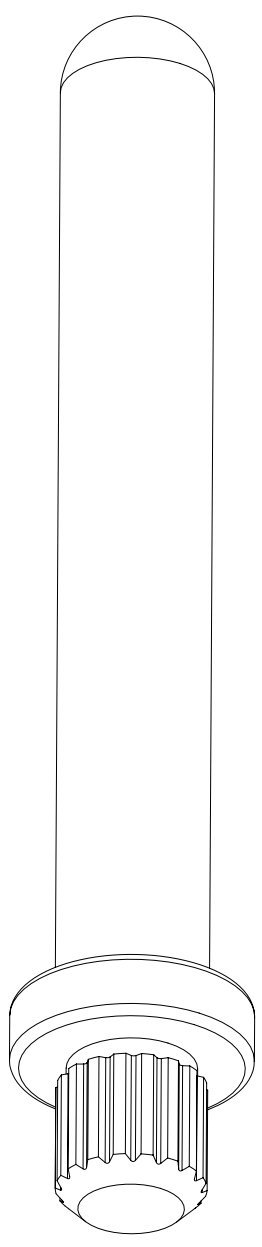


PART NUMBER	DIMENSION L
203263-0234	16.00
203263-0034	26.00
203263-0334	36.00
203263-0434	46.00
203263-0534	20.00
203263-0934	48.00
203263-0734	12.00
203263-3034	70.00



NOTES :

- MATERIAL:
 - BASE METAL: HIGH CONDUCTIVE COPPER ALLOY
 - PLATING ON BODY: 3.18 MICRON MIN SILVER OVER 1.27 MICRON MIN NICKEL
- PRODUCT SPECIFICATION: 2043130018-PS
- APPLICATION SPECIFICATION: 2043130018-AS
- PACKAGING SPECIFICATION: 2032630006-PK
- SILVER COMPONENTS WILL BE SUPPLIED TARNISH FREE BUT MAY TARNISH OVER TIME.
- MINIMUM RECOMMENDED BUSBAR THICKNESS IS 1.5MM

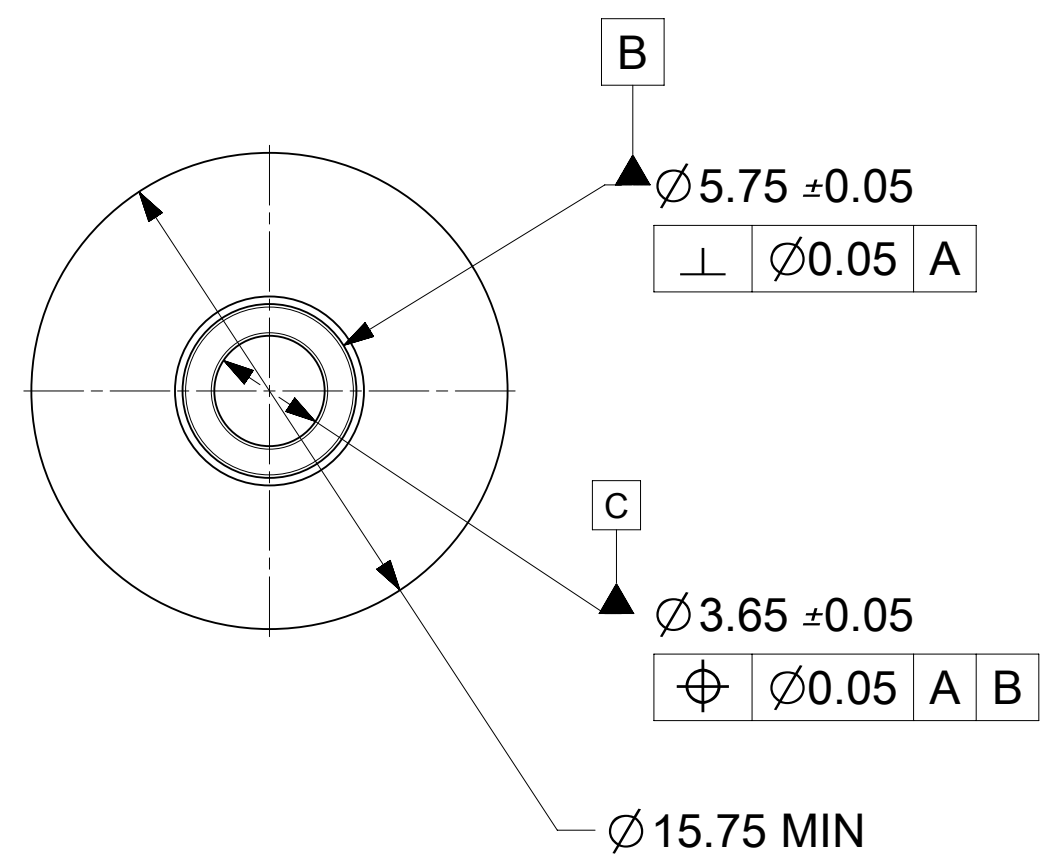
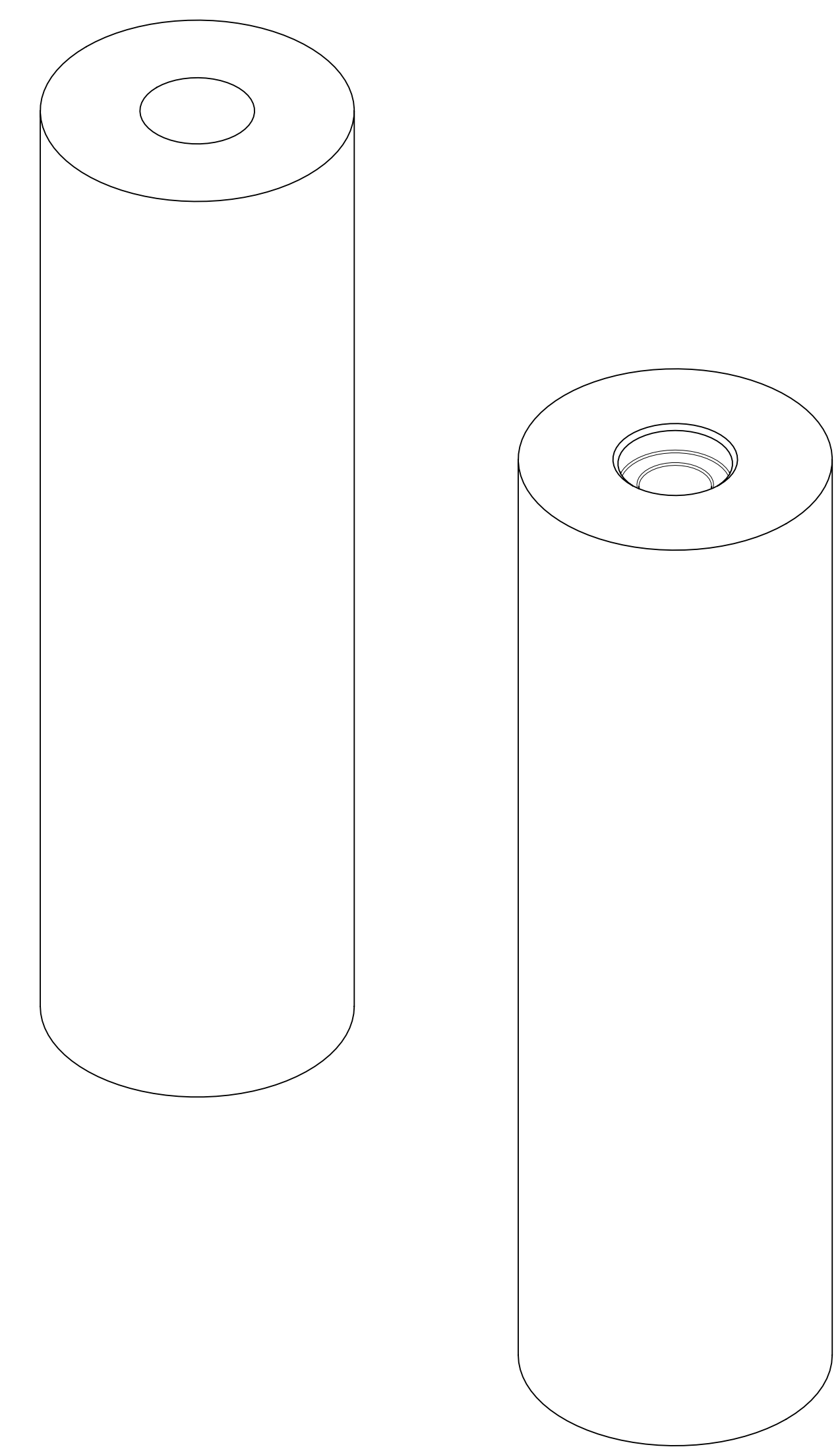
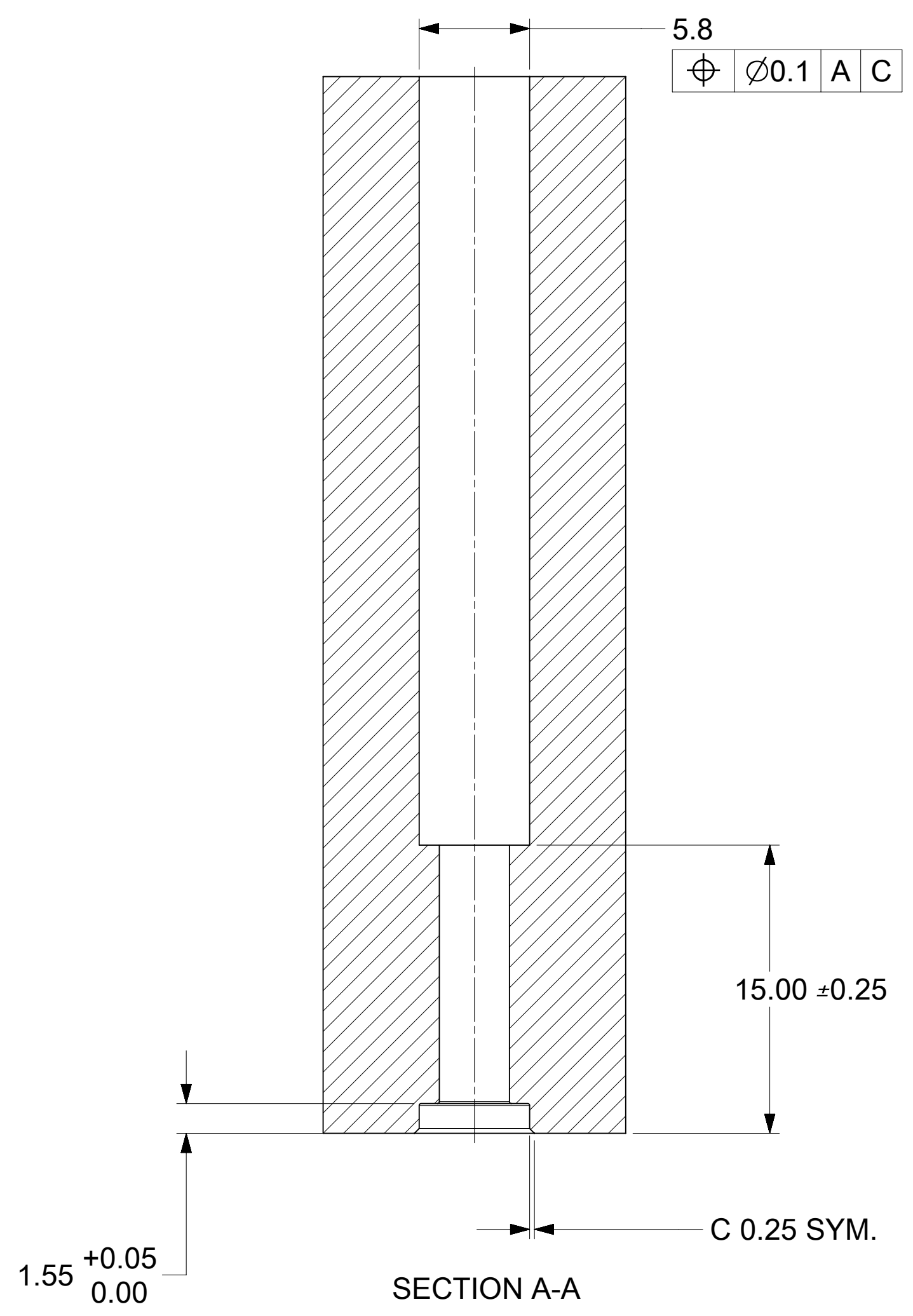
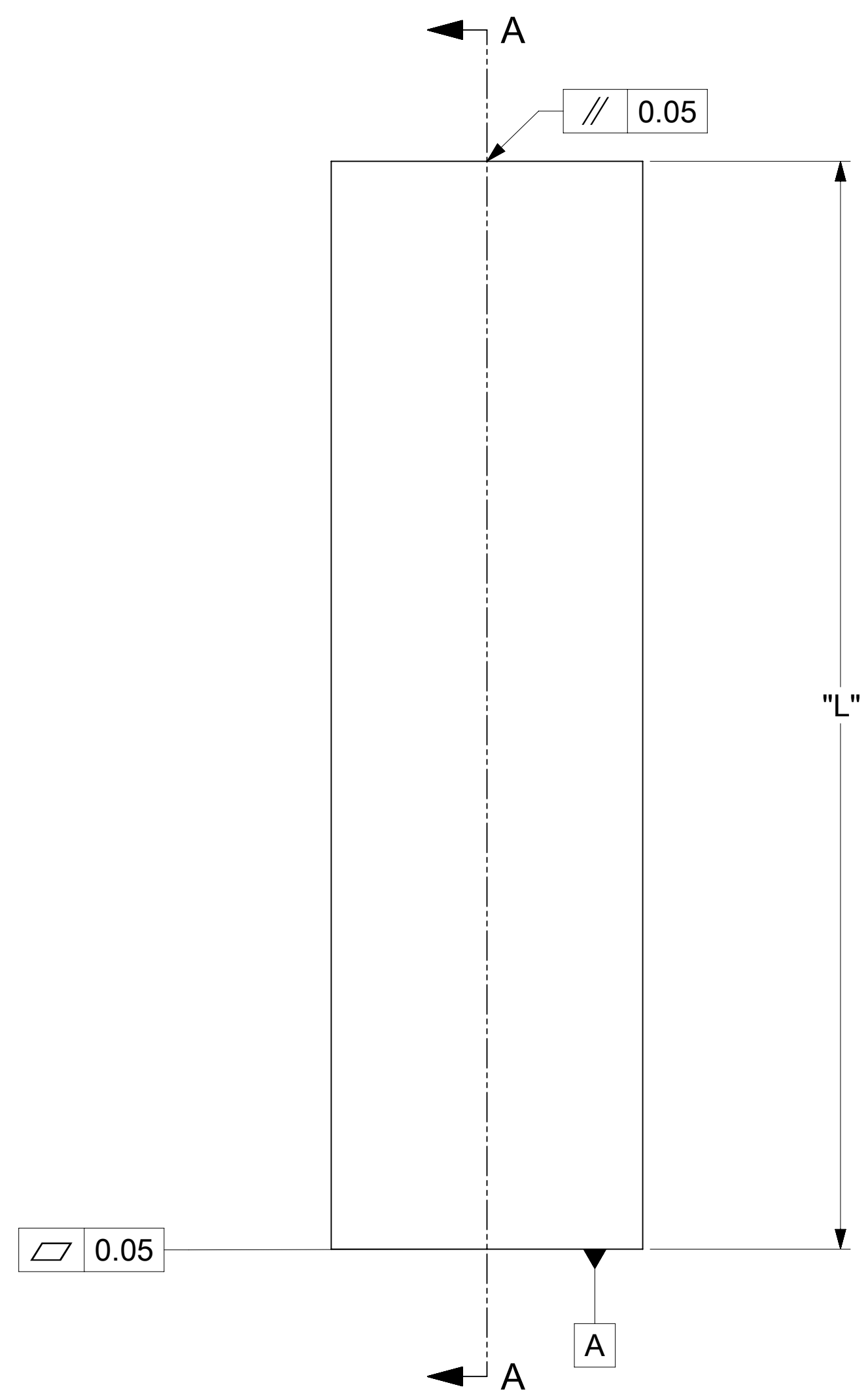
THIS DRAWING CONTAINS INFORMATION THAT IS PROPRIETARY TO MOLEX ELECTRONIC TECHNOLOGIES, LLC AND SHOULD NOT BE USED WITHOUT WRITTEN PERMISSION											
DIMENSION UNITS		SCALE		CURRENT REV DESC: ADDED P/N 203263-3034							
mm		10:1									
GENERAL TOLERANCES (UNLESS SPECIFIED)											
ANGULAR TOL ± 0.5°											
4 PLACES		±									
3 PLACES		±									
2 PLACES		± 0.150									
1 PLACE		± 0.25									
0 PLACES		±									
DRAFT WHERE APPLICABLE MUST REMAIN WITHIN DIMENSIONS				THIRD ANGLE PROJECTION		DRAWING		SERIES		MATERIAL NUMBER	
						D-SIZE		203263		SEE TABLE	
								GENERAL MARKET		SHEET NUMBER	
										1 OF 1	

SENTRALITY 3.40MM MALE TERMINAL PRESS-FIT

PRODUCT CUSTOMER DRAWING

DOCUMENT NUMBER	DOC TYPE	DOC PART	REVISION
2032630034-SD	PSD	000	A7

PIN LENGTH RANGE IN MM	DIMENSION "L" IN MM
UPTO 20	25.0
20-30	35.0
30-40	45.0
40-50	55.0



- NOTES:
1. MATERIAL: STAINLESS STEEL
 2. BREAK ALL SHARP CORNERS AND EDGES
 3. THE TOOL SHOULD BE FABRICATED BY THE CUSTOMER

THIS DRAWING CONTAINS INFORMATION THAT IS PROPRIETARY TO MOLEX ELECTRONIC TECHNOLOGIES, LLC AND SHOULD NOT BE USED WITHOUT WRITTEN PERMISSION											
DIMENSION UNITS		SCALE		CURRENT REV DESC: UPDATED THE NOTES						molex	
mm		4:1									
GENERAL TOLERANCES (UNLESS SPECIFIED)				EC NO: 813784							
ANGULAR TOL ± 0.5°				DRWN: SOURAJ				2024/12/05			
4 PLACES ±				CHK'D: SOURAJ				2025/02/25			
3 PLACES ±				APPR: HTHYAGARAJ				2025/02/26			
2 PLACES ± 0.05				INITIAL REVISION:							
1 PLACE ± 0.1				DRWN: SOURAJ				2022/04/11			
0 PLACES ±				APPR: KPRASAD				2023/12/19			
DRAFT WHERE APPLICABLE MUST REMAIN WITHIN DIMENSIONS		THIRD ANGLE PROJECTION		DRAWING		SERIES		MATERIAL NUMBER		CUSTOMER	
				D-SIZE		219259		2192590003		GENERAL MARKET	
				DOCUMENT NUMBER		DOC TYPE		DOC PART		REVISION	
				2192590003-SD		PSD		000		A1	
SHEET NUMBER		1 OF 1									