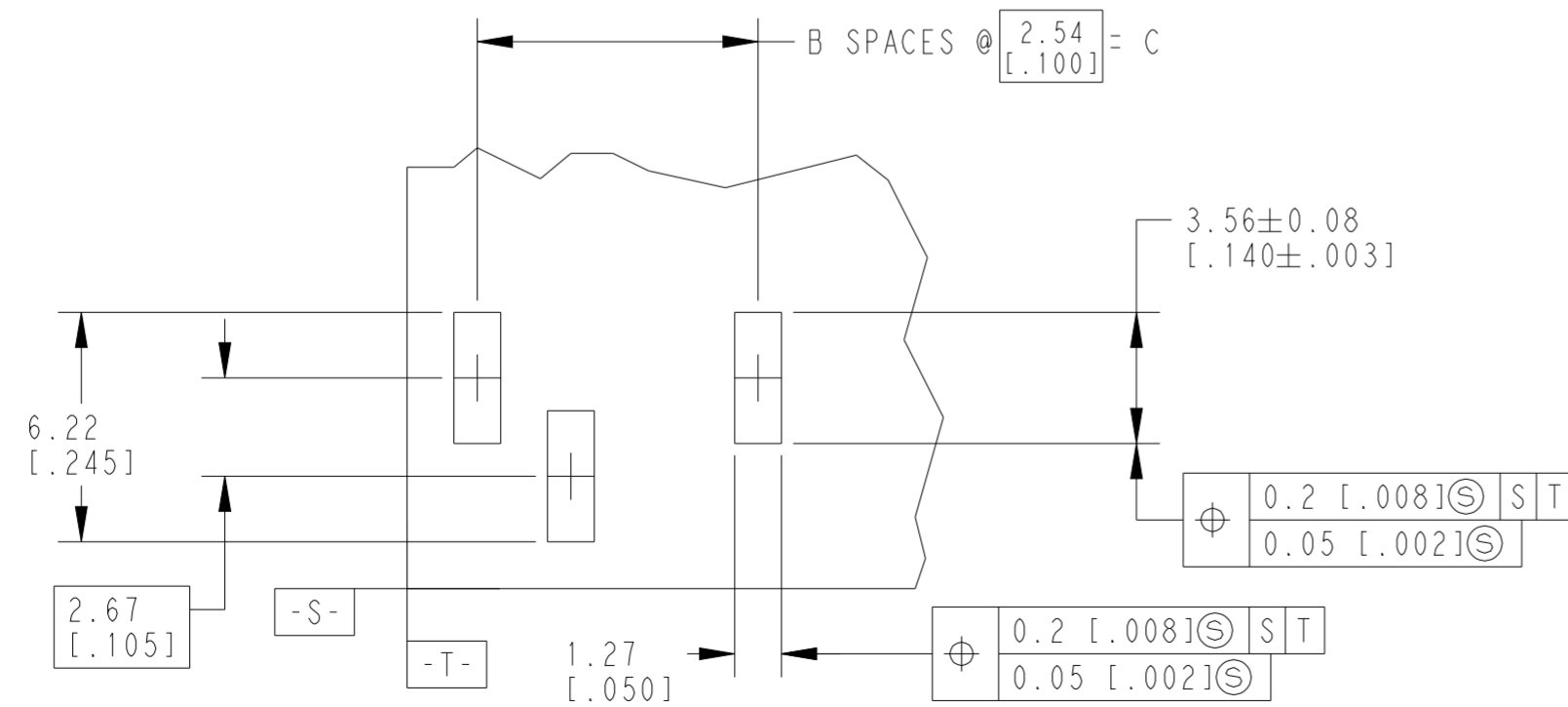
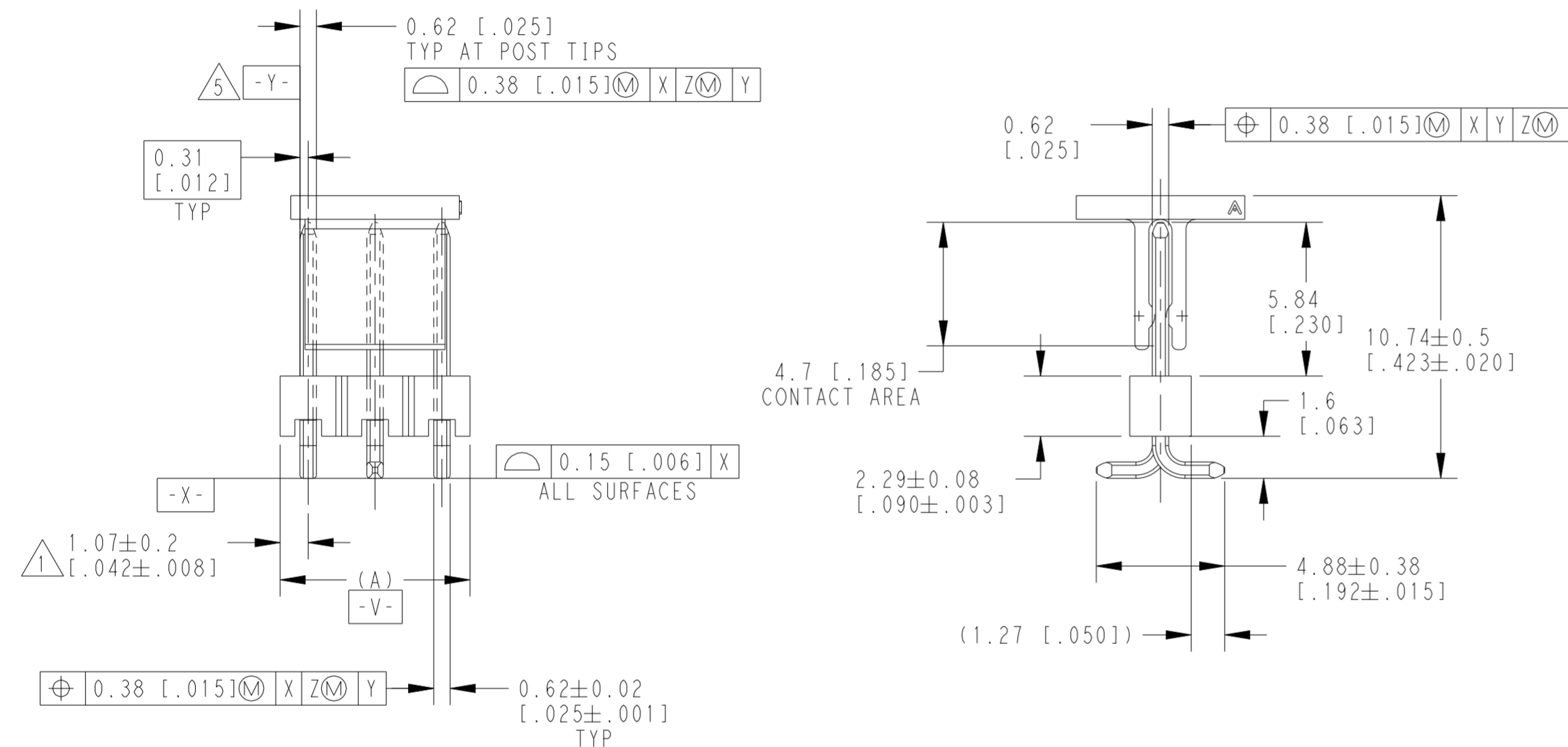
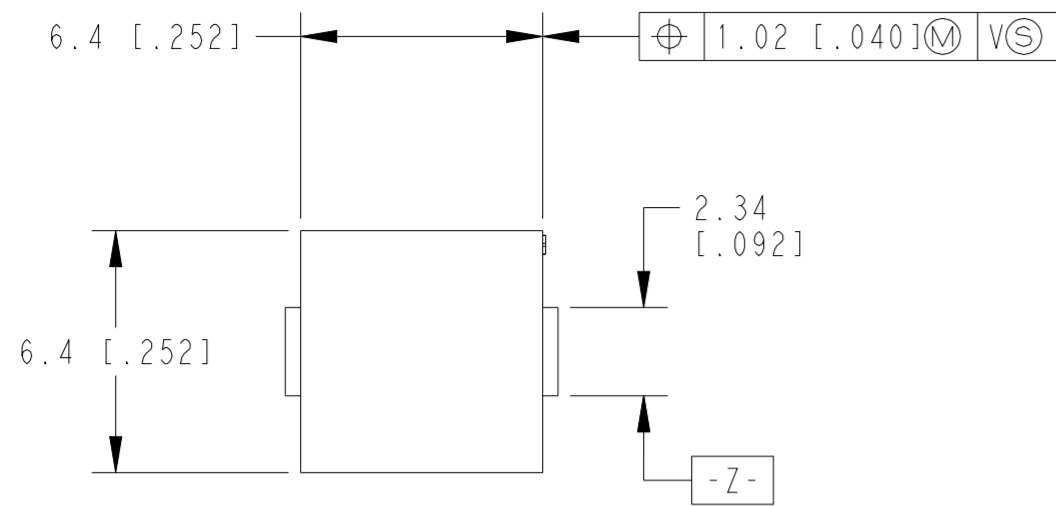


P	LTR	DESCRIPTION	DATE	DWN	APVD
H1		REVISED PER ECR-23-167167	13MAR2023	BB	MF
J		PLATING PLATING OPTIMIZATION (Au TO PdNi+Au FLASH)	22AUG2025	RS	GVP



RECOMMENDED PCB LAYOUT FOR USE WITH 0.20[.008] THICK STENCIL

- 1 THE NOTED DIMENSIONS APPLY AT THE INTERSECTION OF THE POST AND THE HOUSING.
- 2 FINISH: 0.000762[.000030] GOLD ON CONTACT AREA, 0.00254-0.00508[.000100 -.000200] MATTE TIN-LEAD ON SOLDER TAIL, ALL OVER 0.00127[.000050] NICKEL.
- 3 HOUSING: LCP, COLOR-BLACK.
POST: COPPER ALLOY.
PICK AND PLACE CAP: PPA COLOR- BLACK.
- 4 PACKAGED IN TAPE AND REEL PER EIA-481 SPECIFICATIONS.
SEE TABLE FOR TAPE WIDTHS.
- 5 DATUM -Y- SHALL BE THE INTERSECTION OF THE POST AND THE HOUSING.
- 6 PRELIMINARY PART - NOT RELEASED FOR PRODUCTION.
- 7 FINISH: 0.00066[.000026] PdNi+0.00010[.000004] Au FLASH ON CONTACT AREA, 0.00254-0.00508[.000100 -.000200] MATTE TIN ON SOLDER TAIL, ALL OVER 0.00127[.000050] NICKEL.

6	7	PLATING	TAPE WIDTH	C	B	A	NO OF POSN	PART NUMBER
6	7		56mm	35.56[1.400]	14	37.69[1.484]	15	6-147118-3
6	7		56mm	33.02[1.300]	13	35.15[1.384]	14	6-147118-2
6	7		56mm	30.48[1.200]	12	32.61[1.284]	13	6-147118-1
6	7		56mm	27.94[1.100]	11	30.07[1.184]	12	6-147118-0
6	7		56mm	25.40[1.000]	10	27.53[1.084]	11	5-147118-9
6	7		56mm	22.86[.900]	9	24.99[.984]	10	5-147118-8
6	7		44mm	20.32[.800]	8	22.45[.884]	9	5-147118-7
6	7		44mm	15.24[.600]	6	17.37[.684]	7	5-147118-6
6	7		32mm	12.70[.500]	5	14.83[.584]	6	5-147118-5
OBSOLETE	7		32mm	10.16[.400]	4	12.29[.484]	5	5-147118-4
	7		24mm	7.62[.300]	3	9.75[.384]	4	5-147118-3
OBSOLETE	7		44mm	17.78[.700]	7	19.91[.784]	8	5-147118-2
	7		24mm	5.08[.200]	2	7.21[.284]	3	5-147118-1
OBSOLETE			32mm	10.16[.400]	4	12.29[.484]	5	147118-5
OBSOLETE	2		32mm	12.70[.500]	5	14.83[1.584]	6	147118-4
6	2		24mm	7.62[.300]	3	9.75[.384]	4	147118-3
OBSOLETE	2		44mm	17.78[.700]	7	19.91[.784]	8	147118-2
OBSOLETE	2		24mm	5.08[.200]	2	7.21[.284]	3	147118-1

THIS DRAWING IS A CONTROLLED DOCUMENT.

DWN B. HAYMAKER 23JANO2
CHK J. GESFORD 02DEC98
APVD J. GESFORD 02DEC98

STE TE Connectivity

NAME S/M HEADER ASSEMBLY, MOD II, B/W, VERTICAL, SINGLE ROW, .100 C/L, .025 SQ POST, WITH PICK AND PLACE CAP

SIZE A2 CAGE CODE 00779 DRAWING NO C-147118 RESTRICTED TO -

MATERIAL 3 FINISH SEE TABLE WEIGHT -

PRODUCT SPEC - APPLICATION SPEC -

CUSTOMER DRAWING SCALE 5:1 SHEET 1 OF 1 REV J