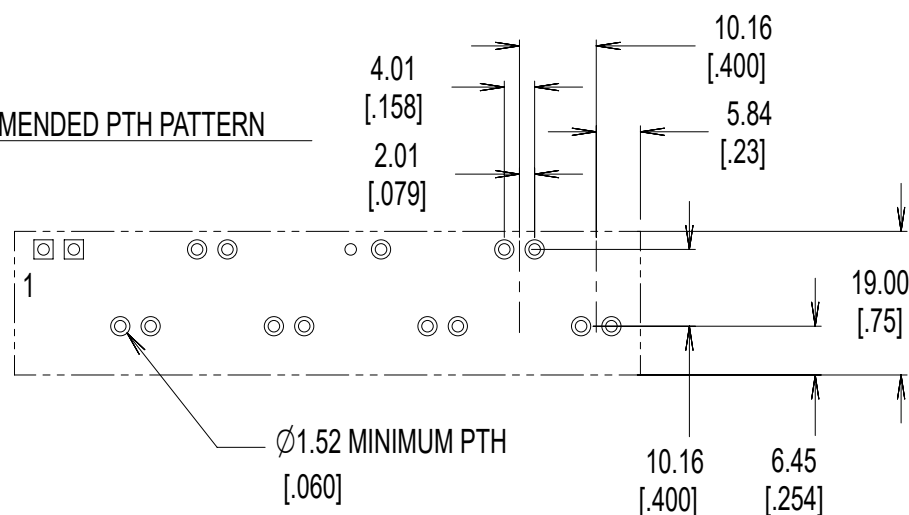
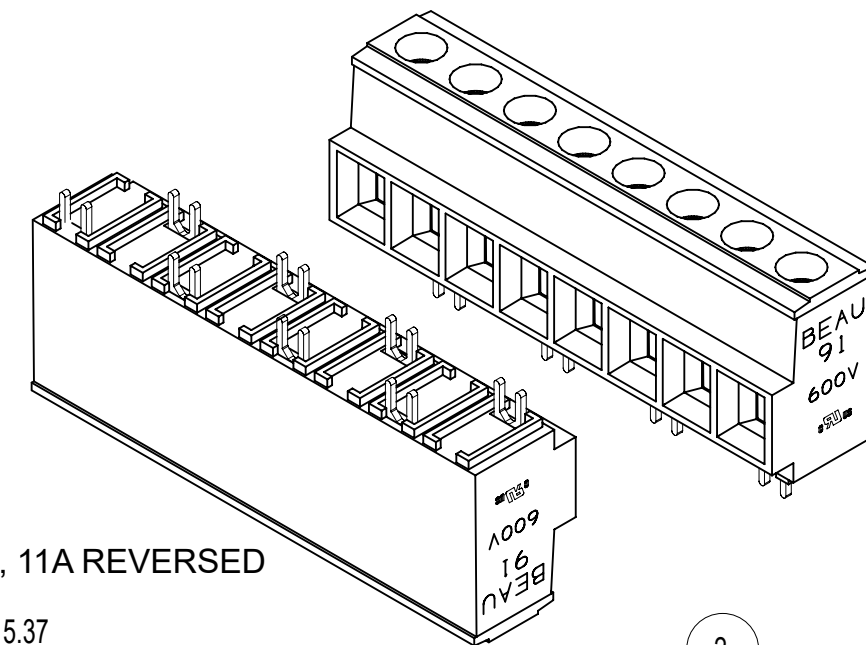
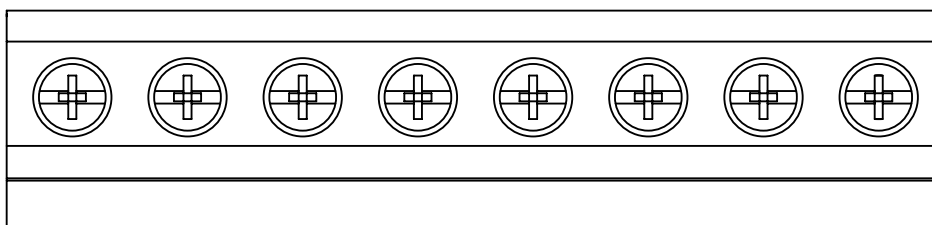


RECOMMENDED PTH PATTERN

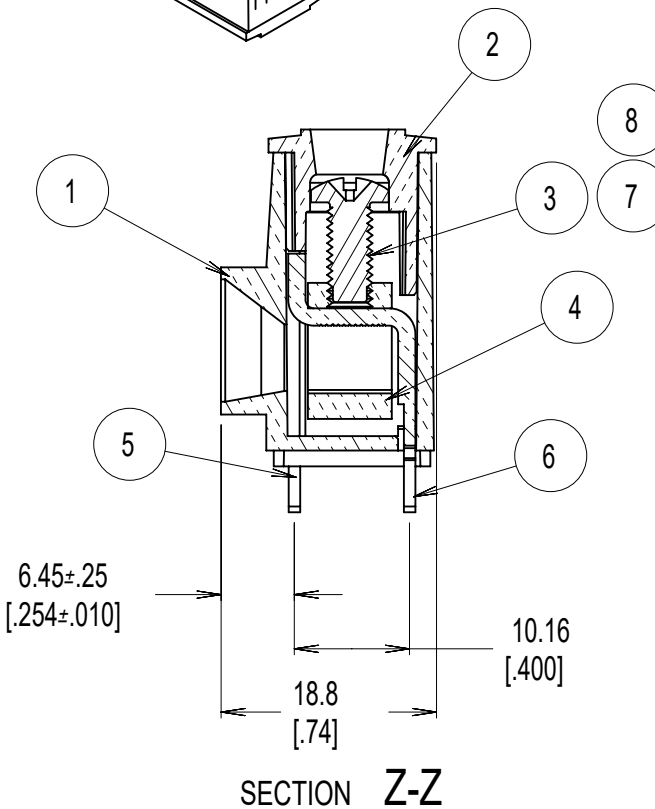
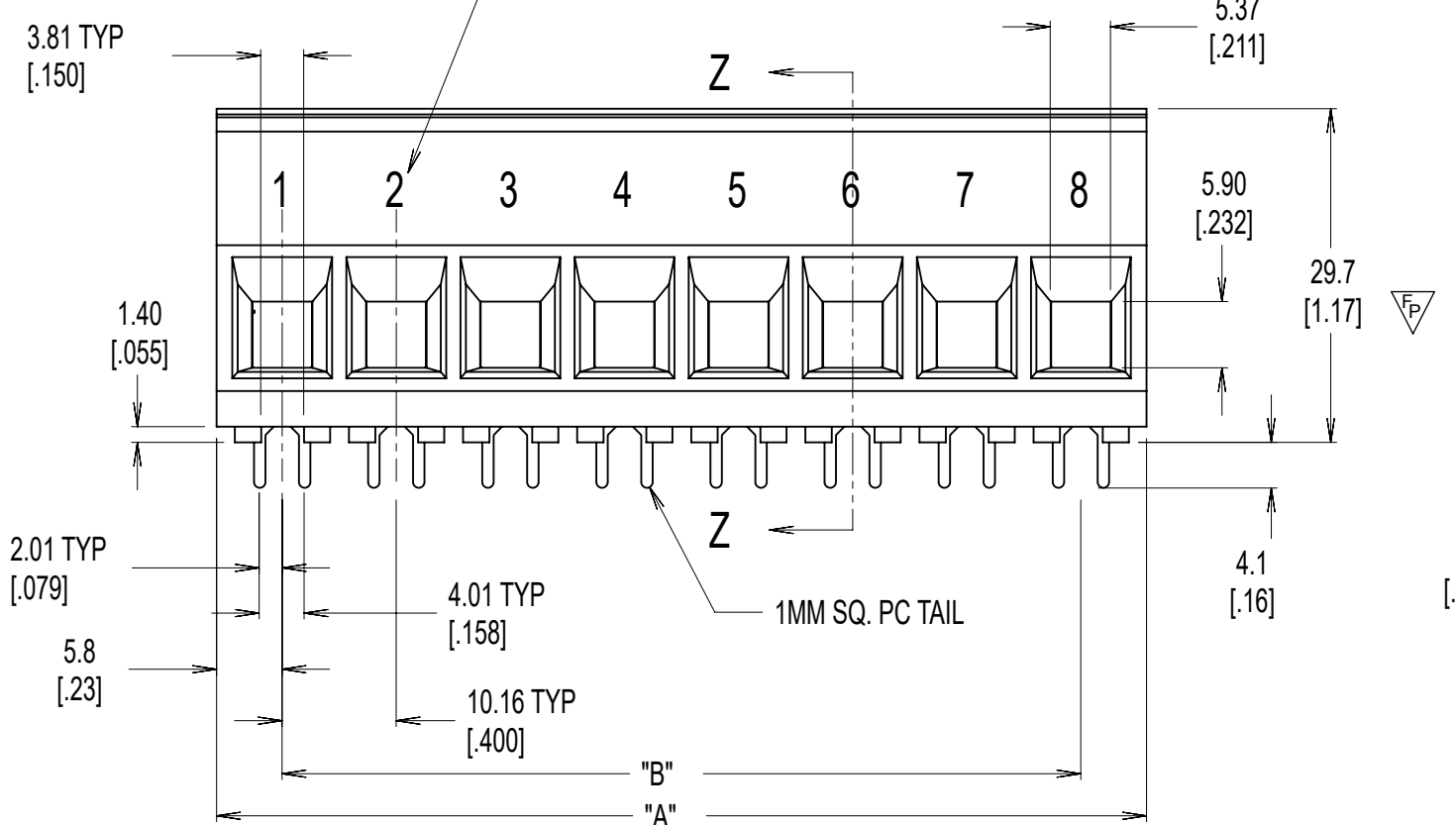


NOTES:

1. MATERIAL: SEE TABLE
2. FINISHES: SEE TABLE
3. PART IS DESIGNED TO MEET UL 1059 CLASS C 600V, 60A
4. STAGGERED PC TAIL POSITION ON ALTERNATE CIRCUITS
5. "XX" REFERS TO NUMBER OF CIRCUITS
6. FOR OPTIONAL IMPRINTING, REFER TO SD-38120-005.
7. ASSEMBLY IS ROHS COMPLIANT BY EXEMPTION. COMPONENTES MARKED WITH AN ASTERISK (*) ARE ROHS COMPLIANT BY EXEMPTION, ALL OTHER ARE ROHS COMPLIANT.



OPTIONAL IMPRINTING, 1/8" 10A SHOWN, 11A REVERSED



8	XX	SCREW, M4 X 0.7 POZI-SLOT	ST. STEEL	PASSIVATED
7	XX	SCREW, M4 X 0.7 SLOTTED	BRONZE	TIN
6	A/R	REAR TERMINAL	COPPER	TIN
5	A/R	FRONT TERMINAL	COPPER	TIN
4	XX	CAGE (*)	BRASS	NICKEL
3	XX	SCREW, M4 X 0.7 POZI-SLOT	BRONZE	TIN
2	1	COVER	THERMOPLASTIC	BLACK
1	1	BODY	THERMOPLASTIC	BLACK
ITEM	QTY.	DESCRIPTION	MATERIAL	FINISH

THIS DRAWING CONTAINS INFORMATION THAT IS PROPRIETARY TO MOLEX ELECTRONIC TECHNOLOGIES, LLC AND SHOULD NOT BE USED WITHOUT WRITTEN PERMISSION

DIMENSION UNITS mm/IN	SCALE 3:2	CURRENT REV DESC: REMOVED OBSOLETE PART NUMBERS AS PER PCN#515979	molex		
GENERAL TOLERANCES (UNLESS SPECIFIED)					
4 PLACES ±	±	EC NO: 823502	PRODUCT CUSTOMER DRAWING		
3 PLACES ±	± 0.005	DRWN: MADHAM5 2025/05/02	DOCUMENT NUMBER		
2 PLACES ±	± 0.13 ± 0.01	CHKD: GGA 2025/07/02	SD-39910-001		
1 PLACE ±	±	APPR: GGA 2025/07/02	DOC TYPE DOC PART REVISION		
0 PLACES ±	±	INITIAL REVISION:	PSD 001 E3		
ANGULAR TOL ± 2.0°		DRWN: GHR 2000/09/13	MATERIAL NUMBER		
		APPR: L.ROTHAUS 2002/09/27	CUSTOMER		
DRAFT WHERE APPLICABLE MUST REMAIN WITHIN DIMENSIONS	THIRD ANGLE PROJECTION	DRAWING	SHEET NUMBER		
		B-SIZE	SEE CHART GENERAL MARKET 1 OF 2		
		39910			

NO. OF CIRCUITS	DIM. "A"		DIM. "B"		MATERIAL NUMBER						
	mm	in	mm	in	STANDARD	OPTIONAL 10A IMPRINT	OPTIONAL 11A IMPRINT	OPTIONAL SLOTTED SCREW	OPTIONAL SLOTTED SCREW W/10A IMPRINT	OPTIONAL SLOTTED SCREW W/11A IMPRINT	OPTIONAL STAINLESS STEEL SCREW
2	21.8	0.86	10.16	0.4	399100102	399120102	399130102	399100402	399120402	399130402	399100702
3	32	1.26	20.32	0.8	399100103	399120103	399130103	399100403	399120403	399130403	399100703
4	42.2	1.66	30.48	1.2	399100104	399120104	399130104	---	399120404	399130404	399100704
5	52.3	2.06	40.64	1.6	---	399120105	399130105	399100405	399120405	399130405	399100705
6	62.5	2.46	50.8	2	399100106	399120106	399130106	399100406	399120406	399130406	399100706
7	72.6	2.86	60.96	2.4	399100107	399120107	399130107	399100407	399120407	399130407	----
8	82.8	3.26	71.12	2.8	399100108	399120108	399130108	399100408	399120408	399130408	399100708
9	93	3.66	81.28	3.2	---	399120109	399130109	399100409	399120409	399130409	----
10	103.1	4.06	91.44	3.6	399100110	399120110	399130110	399100410	399120410	399130410	399100710
11	113.3	4.46	101.6	4	---	399120111	399130111	399100411	399120411	399130411	399100711
12	123.4	4.86	111.76	4.4	399100112	399120112	399130112	399100412	399120412	399130412	399100712
13	133.6	5.26	121.92	4.8	---	399120113	399130113	399100413	399120413	399130413	----
14	143.8	5.66	132.08	5.2	---	399120114	399130114	399100414	399120414	399130414	399100714

THIS DRAWING CONTAINS INFORMATION THAT IS PROPRIETARY TO MOLEX ELECTRONIC TECHNOLOGIES, LLC AND SHOULD NOT BE USED WITHOUT WRITTEN PERMISSION

DIMENSION UNITS mm/IN	SCALE 3:2	CURRENT REV DESC: REMOVED OBSOLETE PART NUMBERS AS PER PCN#515979		molex		
GENERAL TOLERANCES (UNLESS SPECIFIED)						
4 PLACES ±	±			PRODUCT CUSTOMER DRAWING		
3 PLACES ±	± 0.005			DOCUMENT NUMBER		
2 PLACES ±	± 0.13 ± 0.01			SD-39910-001		
1 PLACE ±	± 0.3 ±			DOC TYPE	DOC PART	REVISION
0 PLACES ±	±			PSD	001	E3
ANGULAR TOL ± 2.0°				SHEET NUMBER		
DRAFT WHERE APPLICABLE MUST REMAIN WITHIN DIMENSIONS	THIRD ANGLE PROJECTION	DRAWING	SERIES	MATERIAL NUMBER	CUSTOMER	
		B-SIZE	39910	SEE CHART	GENERAL MARKET	2 OF 2

EC NO: 823502
DRWN: MADHAM5 2025/05/02
CHKD: GGA 2025/07/02
APPR: GGA 2025/07/02
INITIAL REVISION:
DRWN: GHR 2000/09/13
APPR: L.ROTHAUS 2002/09/27