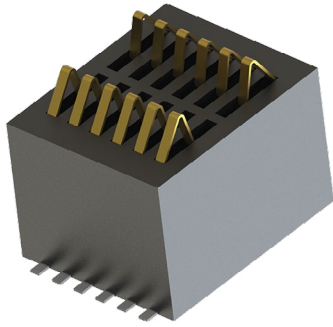


# TALL STACKER CONNECTOR: 9148-000



## General Information



KYOCERA AVX has extended its range of board-to-board stacker connectors for connecting two PCBs with a new high version 00-9148. This new connector is designed to connect 2 parallel boards using a 1 piece connector design for 8mm board spacing in a double row configuration offering 8 positions at 1mm pitch. Rated at 1A continuous through each contact.

Flexible tooling means that versions for board spacings between 4-12mm can be accommodated with single row (4-16 positions) or double row (8-32 positions) options all on the same options all on the same 1mm contact pitch. Options can also include bosses for mechanical stability if required.

The connector is designed for surface mounting and is supplied in tape and reel packaging. It mates with gold-plated pads on the mating board surface. The high connector 00-9148 is suitable for a wide range of applications, including harsh environments such as those found in the automotive industry. It is a cost-effective, reliable and rugged BTB solution that has been proven over time with 50 mating high-temperature nylon plastic and gold-plated beryllium copper contacts for RoHS soldering. This connector can also be customized to fit your application with different number of rows/positions or stacking heights.

### APPLICATIONS

- Automotive applications such as entertainment systems
- Handheld/portable devices requiring docking or cradle charging
- Patient monitoring or portable medical electronics
- Industrial devices requiring pluggable or programming modules
- Internet appliances requiring battery back-up
- Product Specification: Refer to 201-01-173

### FEATURES AND BENEFITS

- Reduced assembly time
- Only one part to purchase and stock
- Extremely robust when subjected to shock and vibration
- Helps reduce tolerance accumulation within system
- Many options for customized versions

### ELECTRICAL

- Current Rating: 1 Amp continuous through all contacts
- Voltage Rating: 125 VAC (RMS) or DC equivalent

### ENVIRONMENTAL

- Operating Temperature: -55°C to +125°C
- Storage Temperature: -40°C to +70°C

### MECHANICAL

- Insulator Material: High Temperature Plastic to UL94V0
- Contact Material: Beryllium Copper
- Plating: Gold on Nose, Pure Tin SMT terminations over base Nickel
- Durability: 50 Cycles

### HOW TO ORDER

<b>00</b>	<b>9148</b>	<b>008</b>	<b>080</b>	<b>2</b>	<b>X</b>	<b>X</b>
Prefix	Series Number	Number of Ways 008 = 8	Stack Height 080 = 8mm	Number of Rows 2 = Double Row	With or Without Boss 0 = Without Boss	With or Without Boss Plating Option 6 = 0.25µm Gold on Nose, Standard 8 = 0.80µm Gold on Nose, Special order only



**SALES DRAWINGS**  
CLICK TO DOWNLOAD

