

71980-YXXLF

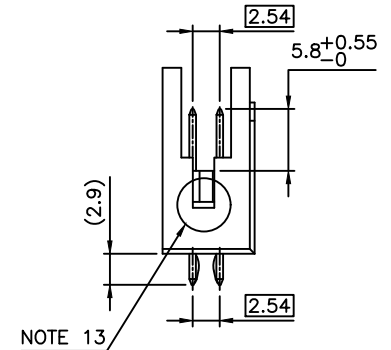
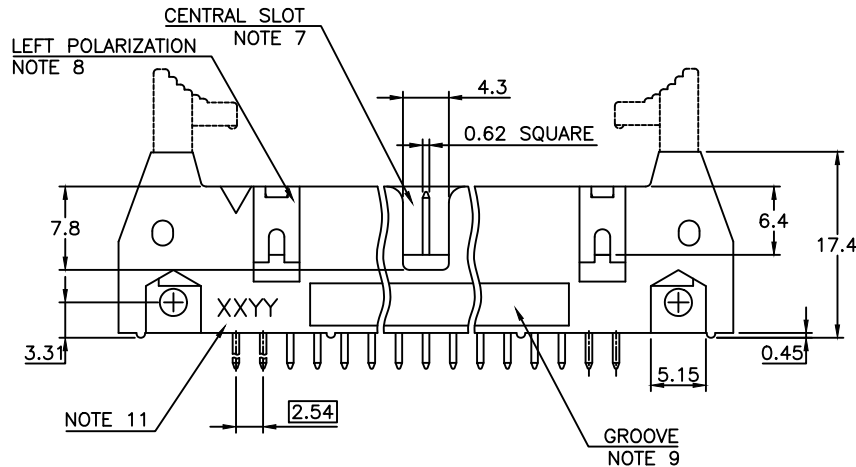
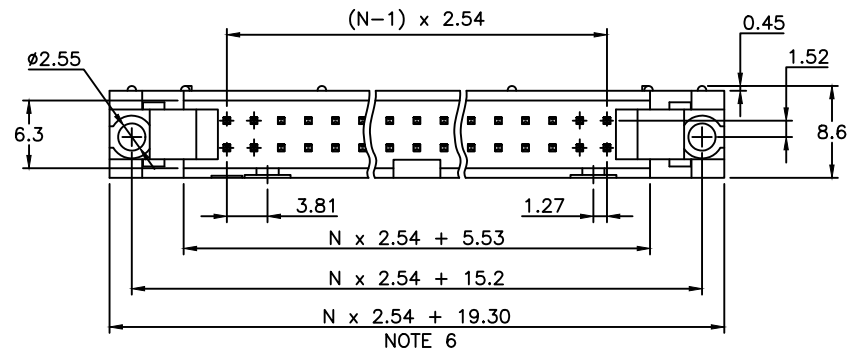
RoHS COMPATIBLE, SEE NOTE 12
 TOTAL NUMBER OF POSITIONS, SEE SHEET 2

LATCHING

- 0= WITHOUT LATCH
- 1= STANDARD LATCH
- 2= LOW PROFILE LATCH

NOTES:

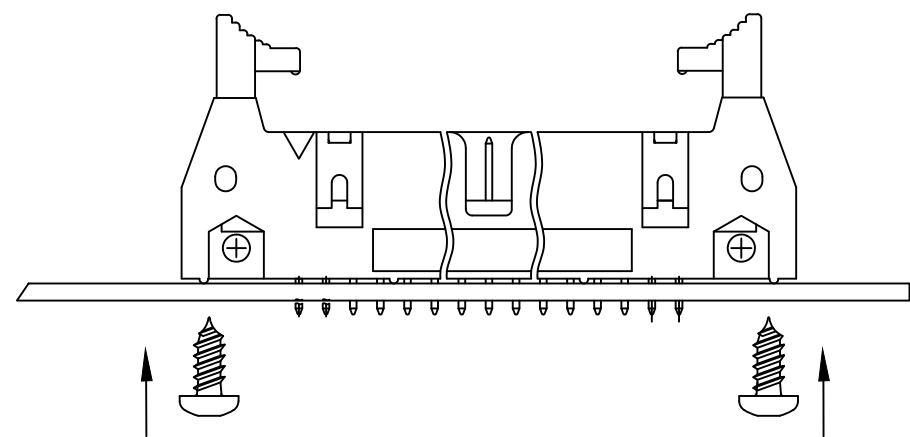
- 1 - HOUSING MATERIAL : GLASS FILLED THERMOPLASTIC. UL94V-0 COLOR: BLUE
- 2 - PIN MATERIAL : PHOSPHOR BRONZE
- 3 - 0.76µm GOLD/GXT (PdNi WITH GOLD FLASH) ON CONTACT AREA
2µm MIN MATTE TIN ON TAIL.
UNDERPLATE : 1.27µm Ni MIN
- 4 - PRODUCT PACKAGED IN TUBES
- 5 - 40N MIN LATCH RETENTION FORCE AT FIRST EXTRACTION
- 6 - TO DETERMINE DIMENSIONS :
N = NUMBER OF POSITIONS PER ROW
EXAMPLE : 8 POS N x 2.54 = 20.32mm
- 7 - NO CENTRAL SLOT ON POSITIONS 6 & 8
- 8 - NO LEFT POLARIZATION ON POSITIONS 06, 08, 10, 14
- 9 - NO GROOVE ON POSITIONS 06, 08, 10, 14, 30, 34
- 10 - RETENTION LEGS LOCATED IN THE CENTER OF THE CONNECTOR
- 11 - MARKING : XX = YEAR CODE
YY = WEEK NUMBER
- 12 - RoHS COMPATIBLE PRODUCT SPECIFICATIONS
 - a - PLATING:
- "LF" MEANS THE PRODUCT IS LEAD-FREE,
2µm MINIMUM MATTE TIN OVER 1.27µm MINIMUM NICKEL UNDERPLATE.
 - b - MANUFACTURING PROCESS COMPATIBILITY
- THE HOUSING WILL WITHSTAND EXPOSURE TO 260°C ±5°C SOLDER BATH TEMPERATURE FOR 5 SECONDS IN A WAVE SOLDER APPLICATION WITH A 1.6mm MIN THICK CIRCUIT BOARD.
 - c - LABELING:
- MEETS PACKAGING SPECS AS PER GS-14-920
 - d - LEGAL STATEMENT: SEE GS-47-0004
- 13 - COSMETIC CRACKS ALLOWED IN THIS AREA
- 14 - THIS PART SERIES IS NOT INITIALLY INTENDED FOR AUTOMOTIVE APPLICATIONS. ADDITIONAL FEES ARE CHARGEABLE FOR ANY ADDITIONAL QUALIFICATION AND TEST REPORTS PERFORMED OUTSIDE THE SCOPE OF THE STANDARD PRODUCT SPECIFICATIONS.
- 15 - UNLESS OTHERWISE APPROVED BY AMPHENOL, ALL PARTS AND COMPONENTS ARE DESIGNED & BUILT ACCORDING TO AMPHENOL'S SPECIFICATIONS WHICH ARE SUBJECT TO CHANGE WITHOUT NOTICE.



mat'l. code		surface		tolerance		projection		product family	
SEE NOTES		ISO 1302		ISO 406 ISO 1101				QUICKIE	
ltr	ecn no	dr	date	tolerances unless otherwise specified		mm		title	
J	B-20413	BVE	15.03.10	angles	linear			SHR.EL.HEADER	
K	F-286432	DDE	26.04.16			scale 2:1		STR, RETENTION LEGS	
E	F07-0195	LMU	07.05.25	dr	B.VERNIER	15.03.10		dwg no	
F	F08-0146	YOV	08.04.11	enr	L.MULIN	15.03.10		sheet 1 of 2	
G	B-16860	LMU	14.01.27	chr	J.COMPAGNON	15.03.10		size	
H	B-19094	LMU	14.10.16	appd	J.COMPAGNON	15.03.10		A3	
sheet		revision						type	
index		sheet						CUSTOMER Drawing	

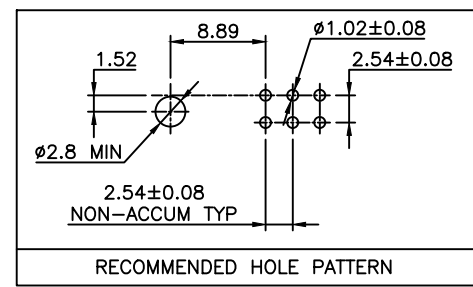
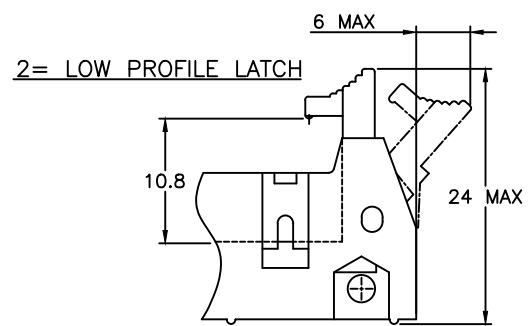
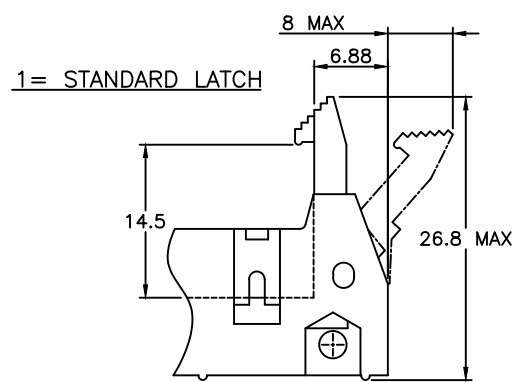


TOTAL NUMBER OF POSITIONS	
06	26
08	34
10	40
14	44
16	50
18	60
20	64



WHEN THE CONNECTORS NEED TO BE FIXED ON THE PCB'S
THE STAINLESS SCREWS REF TC POZI DIN7981 Ø2.9 X 6.5MM
TO BE USED

LATCHING FEATURES :



mat'l. code		surface	tolerance	projection	product family
SEE NOTES		ISO 1302	ISO 406 ISO 1101		QUICKIE
ltr	ecn no	dr	date	tolerances unless otherwise specified	title
A	B-20413	BVE	15.03.10	linear	SHR.EL.HEADER
B	F-286432	DDE	26.04.16	mm	STR, RETENTION LEGS
				scale 2:1	dwg no
					sheet 2 of 2
					size
					A3
				type	CUSTOMER Drawing
sheet index	revision sheet				