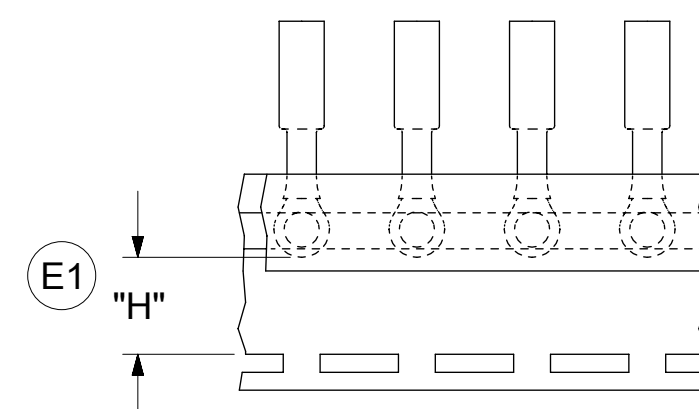
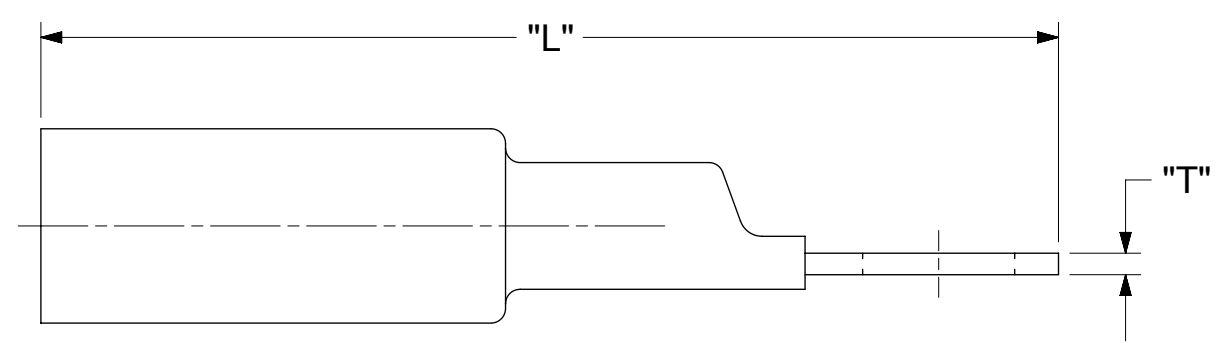
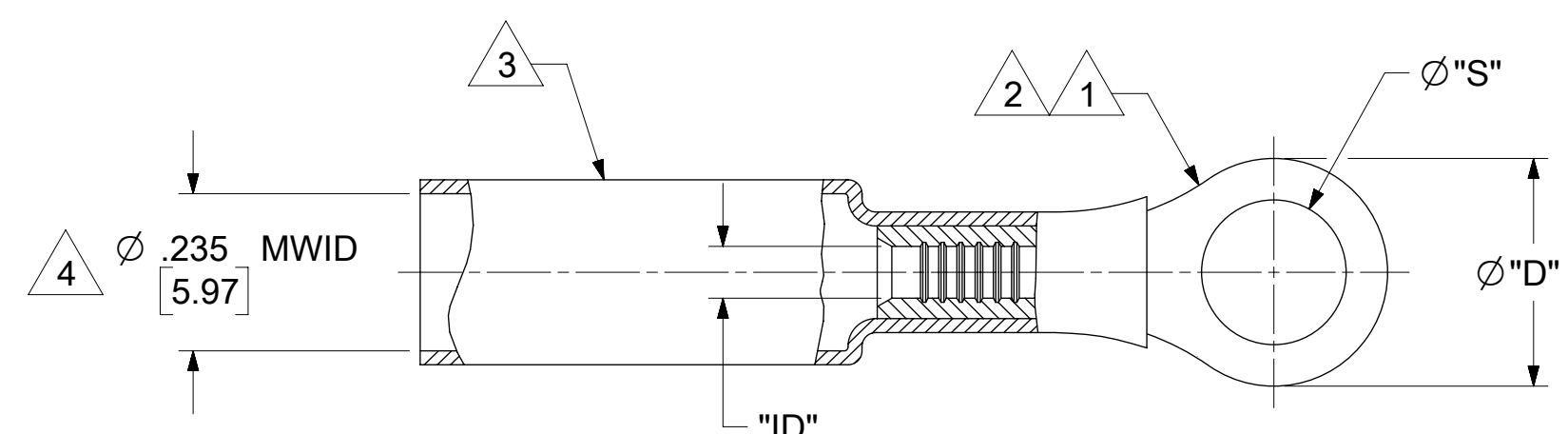


MAT'L NO (LOOSE PC)	ENG NO (LOOSE PC)	MAT'L NO (ON TAPE)	ENG NO (ON TAPE)	STUD SIZE	Ø"S" ±.005 (±0.13)	Ø"D" MAX	"ID" MIN	"L" REF	"T" REF	"H" REF
191640085	SA-221-06	191641141	SA-221-06T	6	.146 (3.71)	.320 (8.13)	.064 (1.63)	1.30 (33.0)	.028 (0.71)	.544 (13.82)
191640086	SA-221-08	191640419	SA-221-08T	8	.173 (4.39)					
191640003	SA-221-10	191640306	SA-221-10T	10	.198 (5.03)	.475 (12.07)		1.47 (37.3)		-
191640625	SA-222-10	-	-	10	.198 (5.03)					
191640004	SA-222-14	191640844	SA-222-14T	1/4	.265 (6.73)					
191640435	SA-222-56	191641148	SA-222-56T	5/16	.328 (8.33)	.542 (13.77)	.055 (1.40)	1.54 (39.1)	.032 (0.81)	.338 (8.59)
191640005	SA-226-38	191640845	SA-226-38T	3/8	.390 (9.91)					



PARTS ON TAPE



- NOTES:
- 1 TERMINAL MATERIAL: COPPER ALLOY
 - 2 FINISH: ELECTRO TIN PLATE.
 - 3 INSULATION MATERIAL: HEAT SHRINKABLE TUBING WITH HOTMELT ADHESIVE LINER. COLOR: RED.
 - 4 MWID - MAXIMUM WIRE INSULATION DIAMETER.
 - 5. PARTS MUST BE RoHS COMPLIANT.

FUNCTIONAL SYMBOLS	THIS DRAWING CONTAINS INFORMATION THAT IS PROPRIETARY TO MOLEX ELECTRONIC TECHNOLOGIES, LLC AND SHOULD NOT BE USED WITHOUT WRITTEN PERMISSION									
	DIMENSION UNITS		SCALE		CURRENT REV DESC: REVISED DIM "H"					
	INCH/MM		NTS							
	GENERAL TOLERANCES (UNLESS SPECIFIED)									
DIVISIONAL SYMBOLS	4 PLACES		±							EC NO: 837276
	3 PLACES		± 0.13 ± 0.005							DRWN: DEANNM1 2025/10/13
	2 PLACES		± 0.25 ± 0.01							CHK'D: ETHRODAHL 2025/10/14
	1 PLACE		±							APPR: ETHRODAHL 2025/10/14
0 PLACES		±							INITIAL REVISION:	
ANGULAR TOL		± °							DRWN: BENDERLE 2004/03/31	
DRAFT WHERE APPLICABLE MUST REMAIN WITHIN DIMENSIONS		THIRD ANGLE PROJECTION		DRAWING		SERIES		MATERIAL NUMBER		CUSTOMER
				C-SIZE		19164		SD-19164-006		GENERAL MARKET
								DOC TYPE	DOC PART	REVISION
								PSD	001	E1
								SHEET NUMBER		
								1 OF 1		