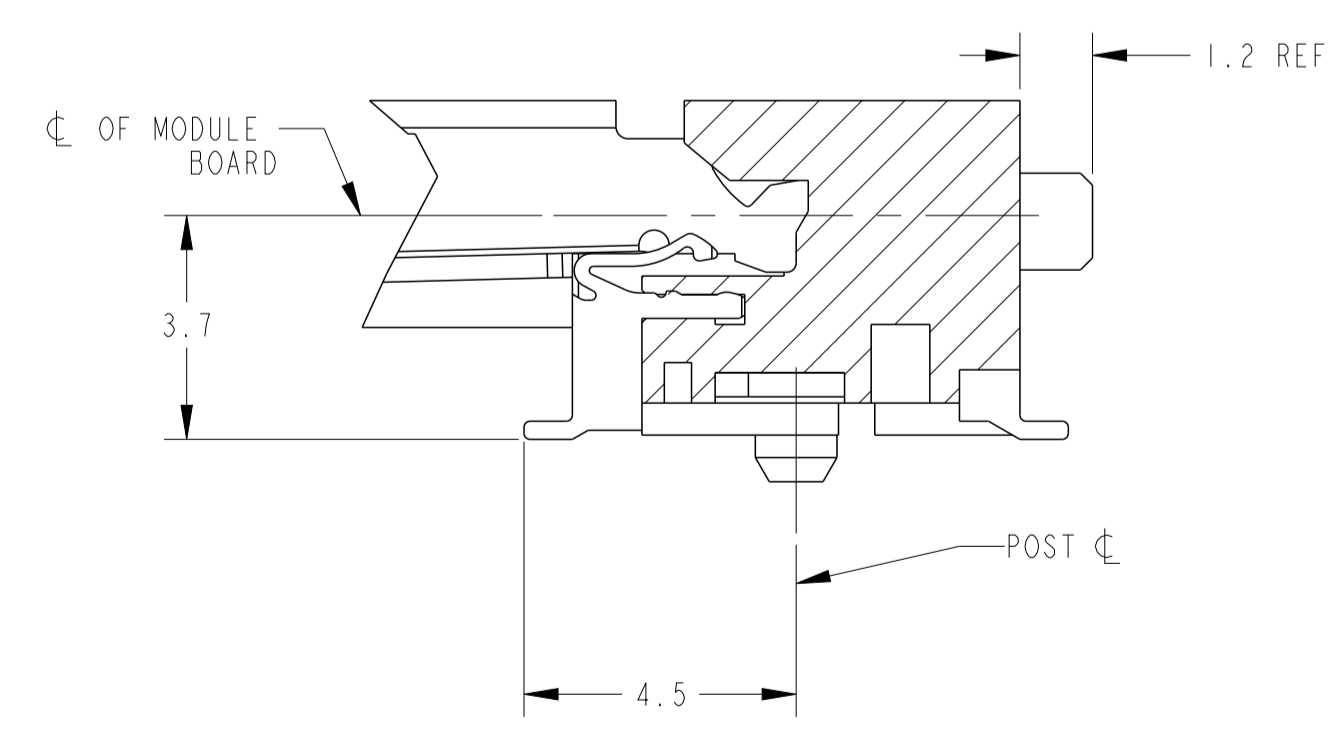
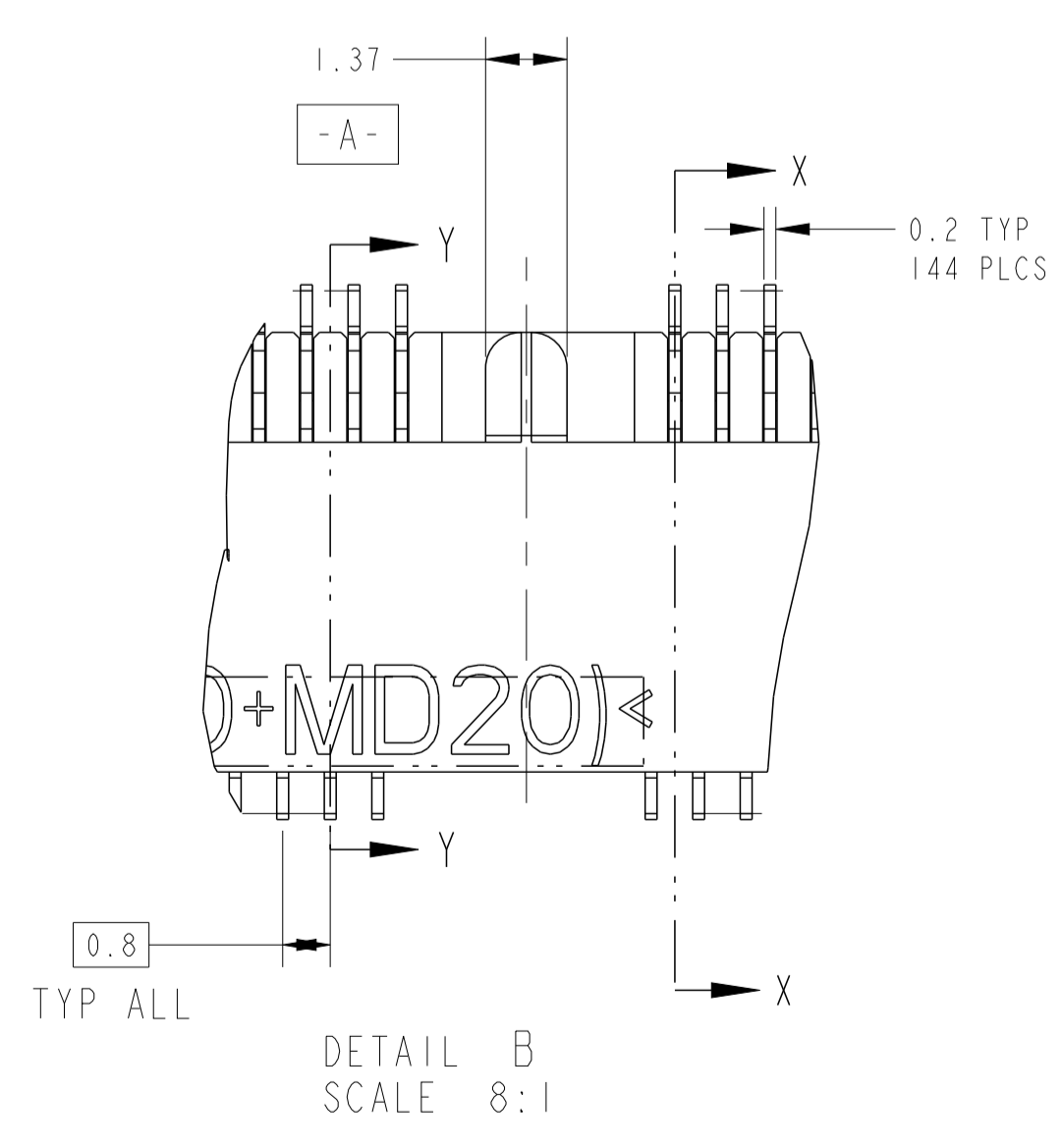
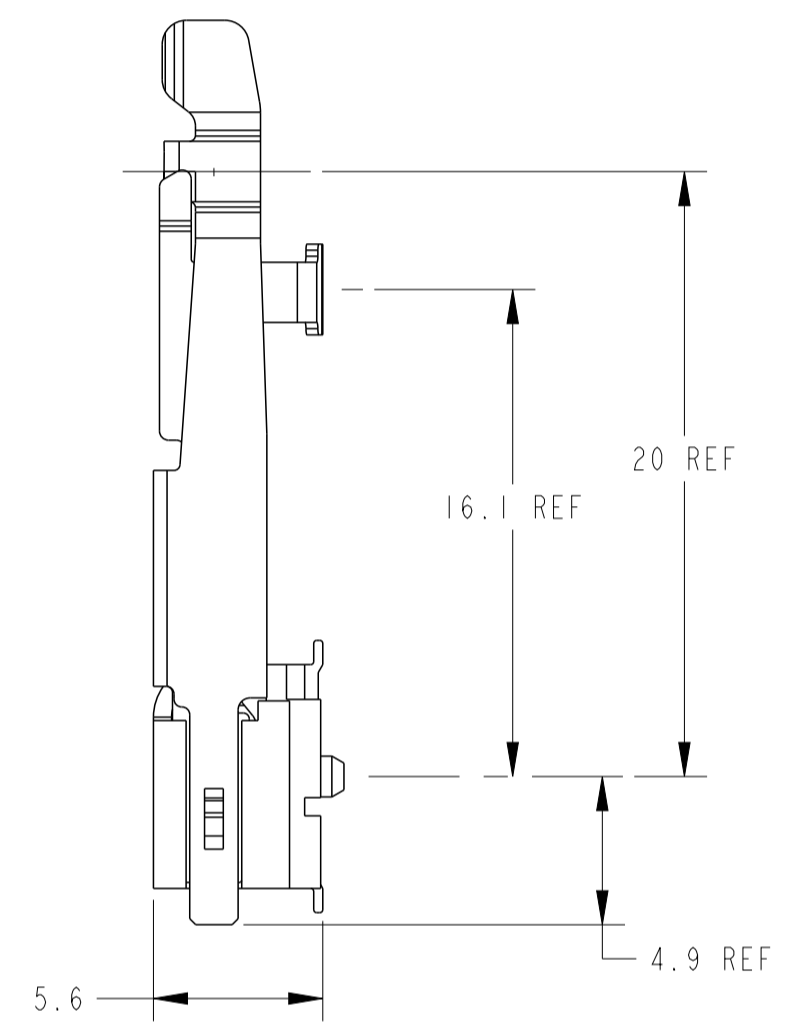
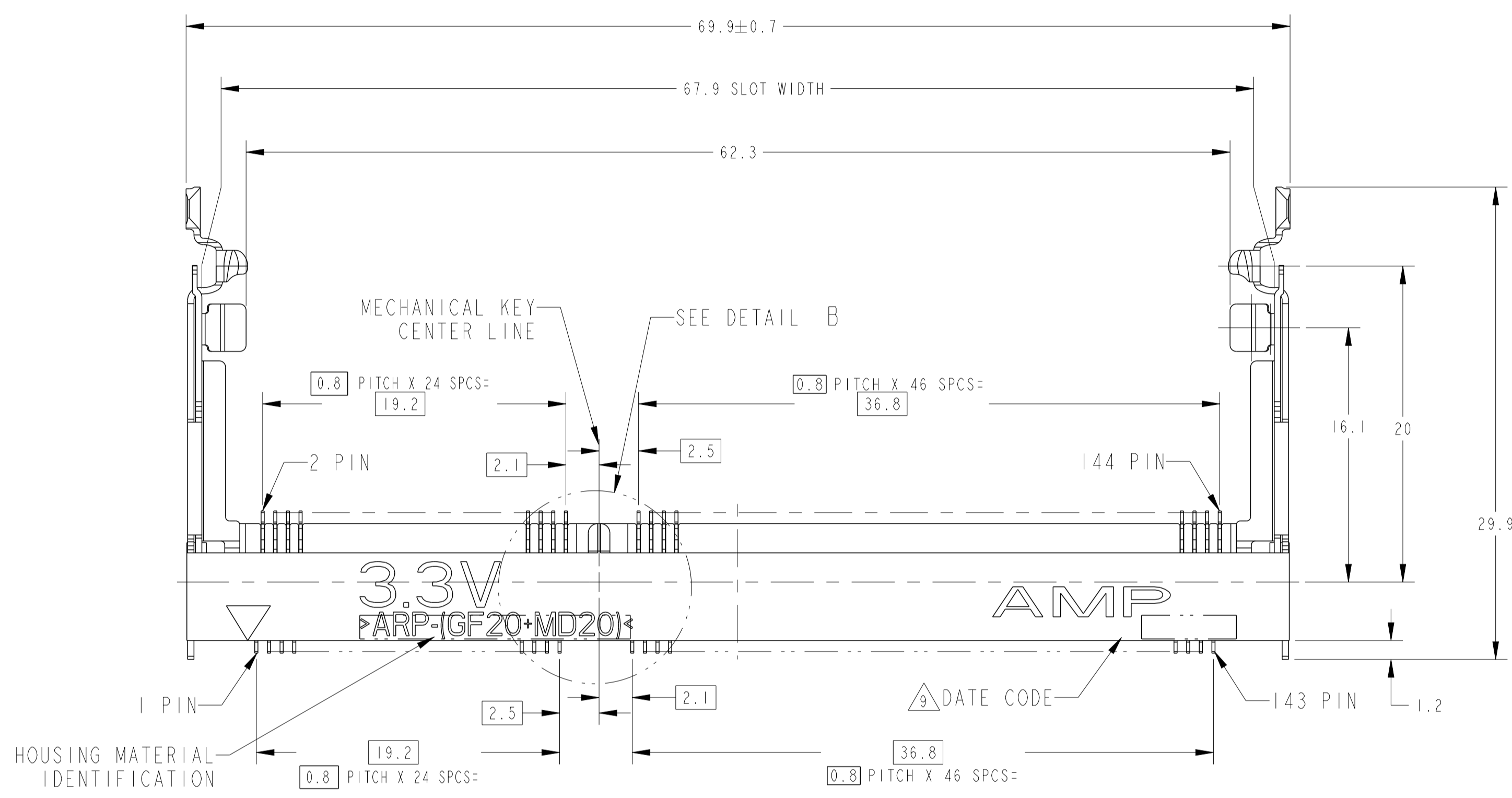
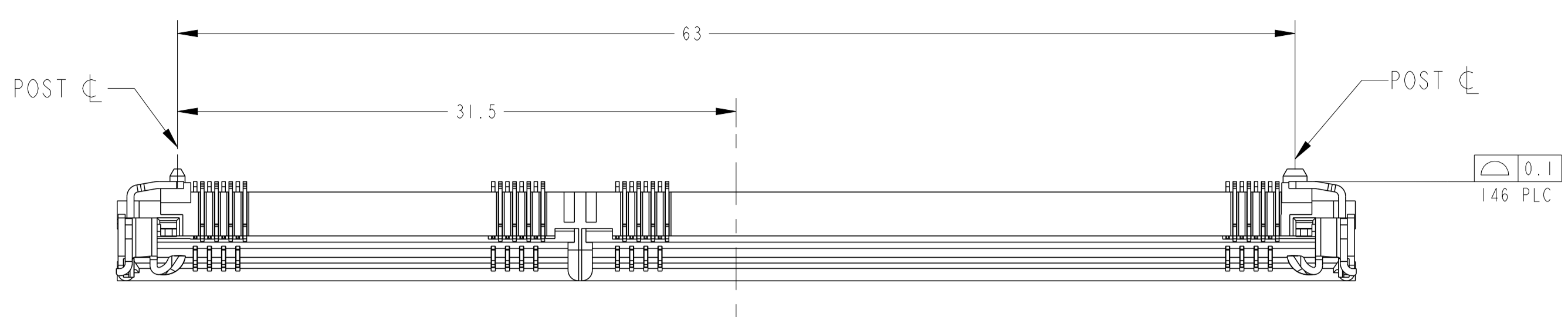
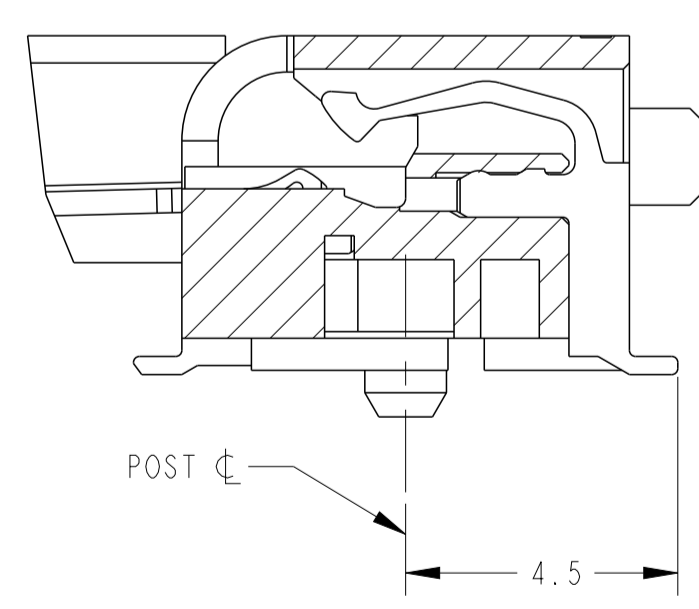


REVISIONS				
P	LTN	DESCRIPTION	DATE	APPD
P1		REVISED PER ECO-11-005139	26APR11	RK HMR



SECTION X-X
SCALE 8:1
ROTATED 90° CCW



SECTION Y-Y
SCALE 8:1
ROTATED 90° CCW

- 1 MATERIAL, HOUSING, HIGH TEMPERATURE PLASTIC UL94V-0, NAT. CONTACT: COPPER ALLOY LOCK LEVER: SUS301 TIN PLATING.
- 2 FINISH; CONTACT AREA: 0.00025 MIN GOLD PLATE ON 0.001 MIN ALL OVER NICKEL SOLDERING AREA: 0.00005 MIN TO 0.00030 MAX GOLD PLATE
- 3. TOLERANCES NON-ACCUMULATIVE.
- 4 PART TO BE PACKAGED PER EIA IS-704 STANDARD. REEL DIAMETER IS 559 mm, TAPE WIDTH IS 88 mm, AND TAPE PITCH IS 36 mm.
- 5 PACKAGED IN HARD TRAY.
- 6 FINISH: CONTACT AREA: 0.00025 MIN GOLD PLATE ON 0.001 MIN ALL OVER NICKEL SOLDERING AREA: BRIGHT TIN-LEAD
- 7 PART PACKAGED PER EIA IS-704 STANDARD. REEL DIAMETER SHALL BE 330mm, TAPE WIDTH SHALL BE 88mm, AND TAPE PITCH SHALL BE 36mm.
- 8 REVERSE REELING.
- 9 DATE CODE (4-DIGITS), LOCATED AS SHOWN. TO BE INTERPRETED AS FOLLOWS:
 DIGIT # 1 - LAST DIGIT OF YEAR.
 DIGITS # 2 AND # 3 - CALENDAR WEEK
 DIGIT # 4 - DAY OF THE WEEK (WITH SUNDAYS AS DAY 1).

NIL	AVAILABLE	△	GRAM 3.3V	144	9-390111-2	7	8
NIL	AVAILABLE	△	GRAM 3.3V	144	9-390111-1	7	1
9-390111-1	NOT AVAILABLE	△	GRAM 3.3V	144	6-390111-4	4	4
9-390111-1	NOT AVAILABLE	△	GRAM 3.3V	144	6-390111-1	4	4
9-390111-1	NOT AVAILABLE	△	GRAM 3.3V	144	3-390111-4	5	5
NIL	AVAILABLE	△	GRAM 3.3V	144	3-390111-1	5	5
390111-1	NOT AVAILABLE	△	GRAM 3.3V	144	390111-4		
NIL	AVAILABLE	△	GRAM 3.3V	144	390111-1		
SUPERSEDED BY	REMARKS	FINISH	POWER SUPPLY	POS	PART NUMBER		

THIS DRAWING IS A CONTROLLED DOCUMENT.

DIMENSIONS:	TOLERANCES UNLESS OTHERWISE SPECIFIED:	0 PLC ±0.2	1 PLC ±0.2	2 PLC ±0.2	3 PLC ±0.2	4 PLC ±0.2	ANGLES ±°	FINISH SEE TABLE
-------------	--	------------	------------	------------	------------	------------	-----------	------------------

MATERIAL: SEE TABLE

DATE: 6-23-97
 CHK: R. TALLEY
 APPD: SF LEONG

PRODUCT SPEC: 108-1739
 APPLICATION SPEC: 114-1114

WEIGHT: -

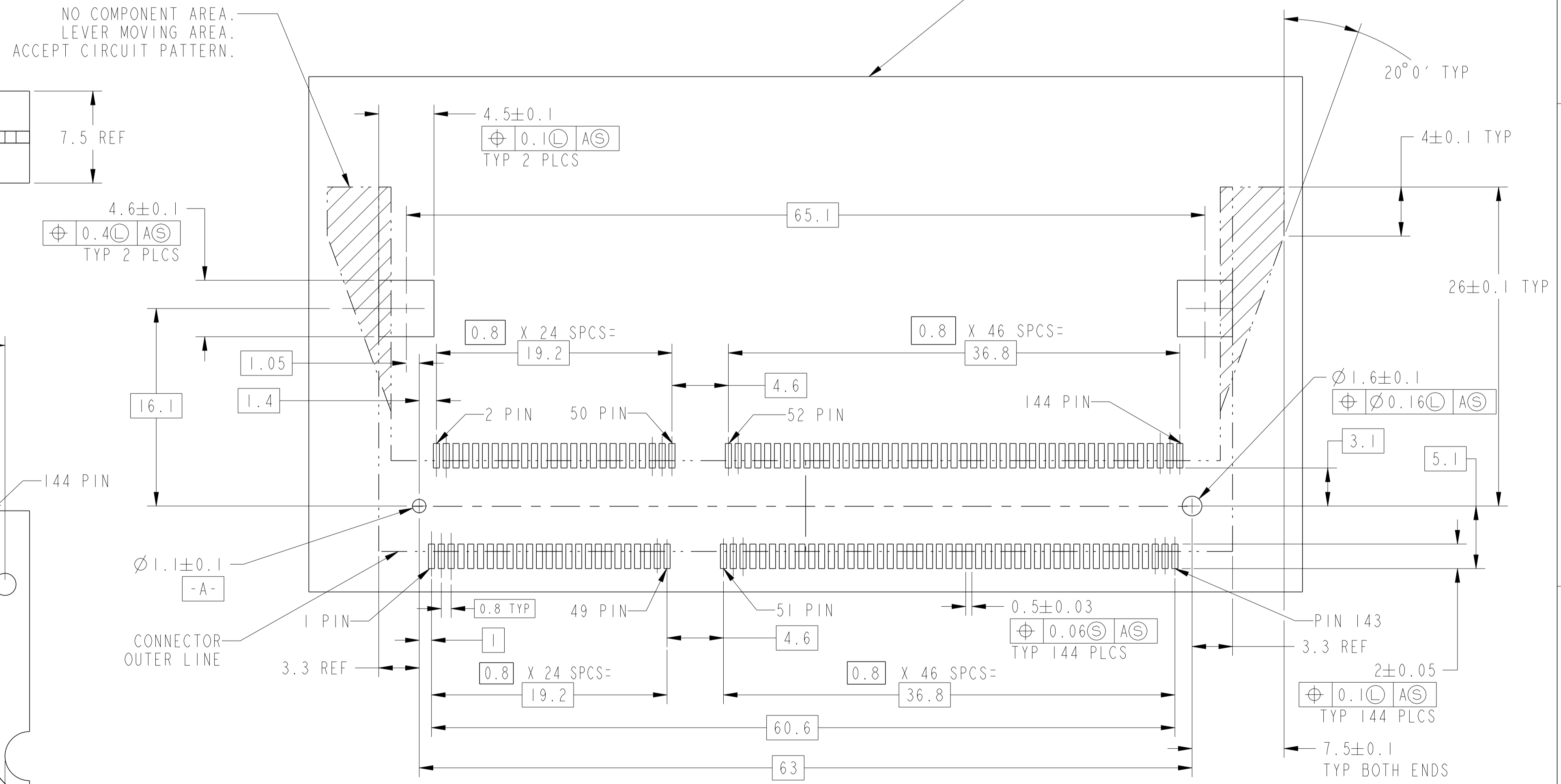
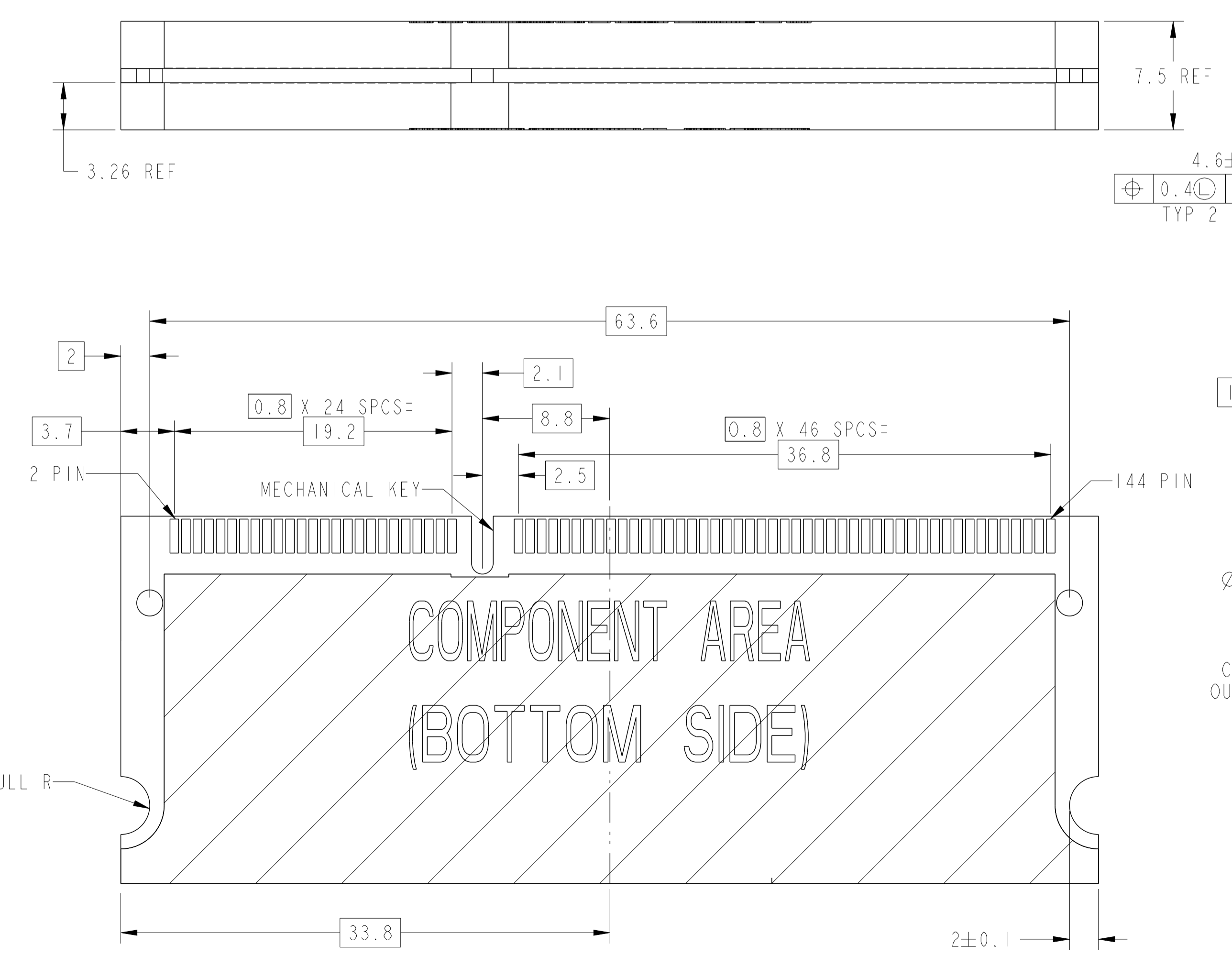
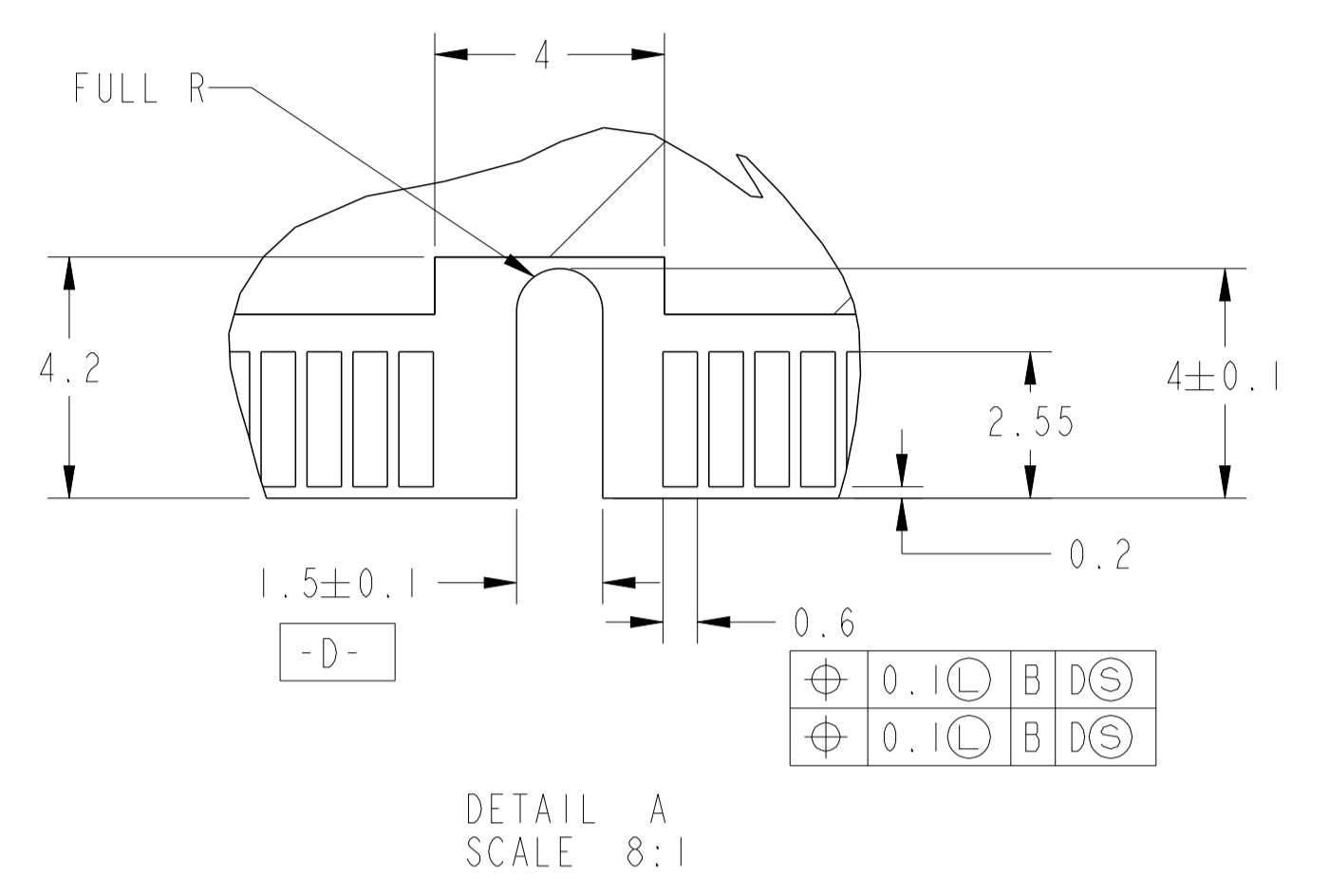
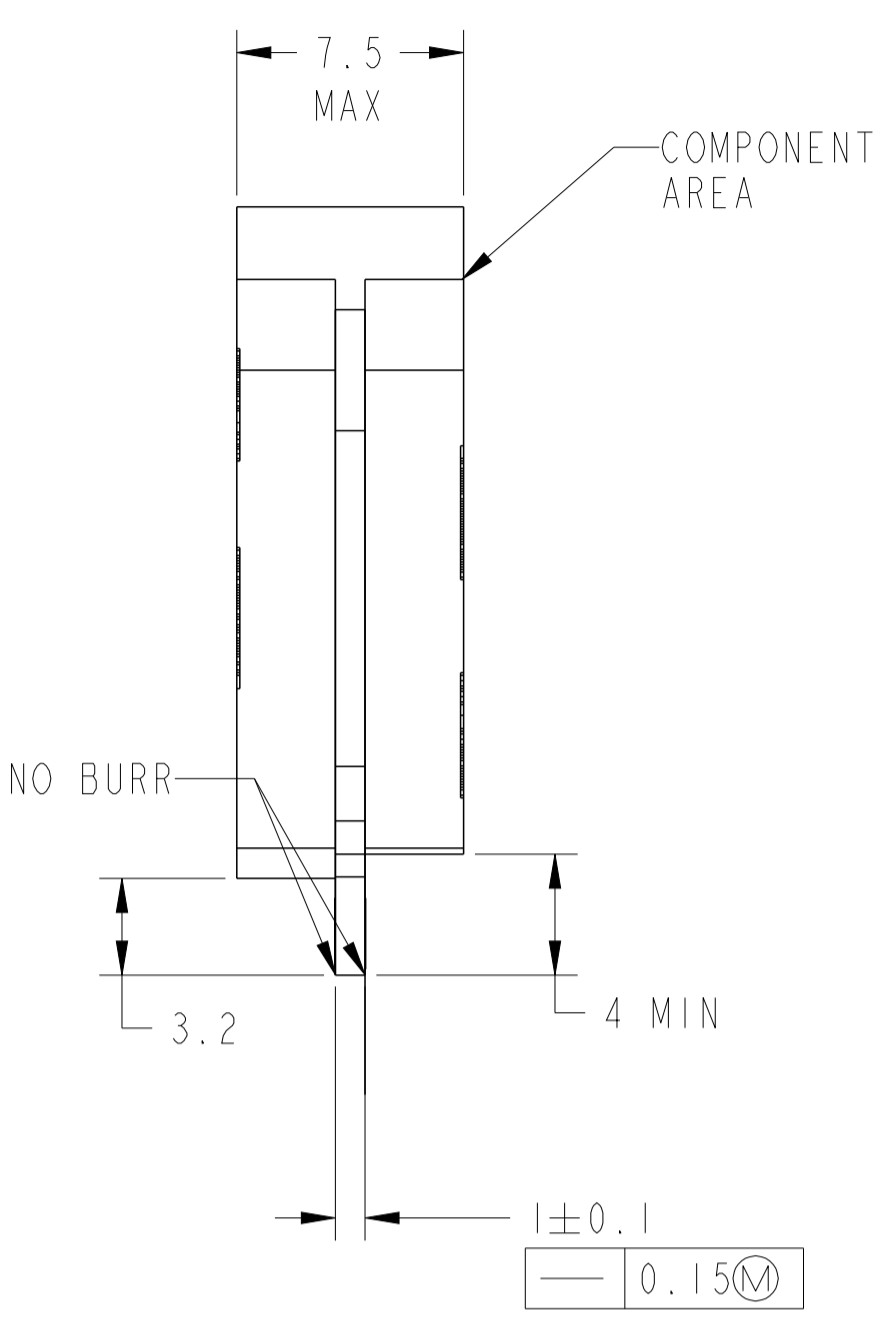
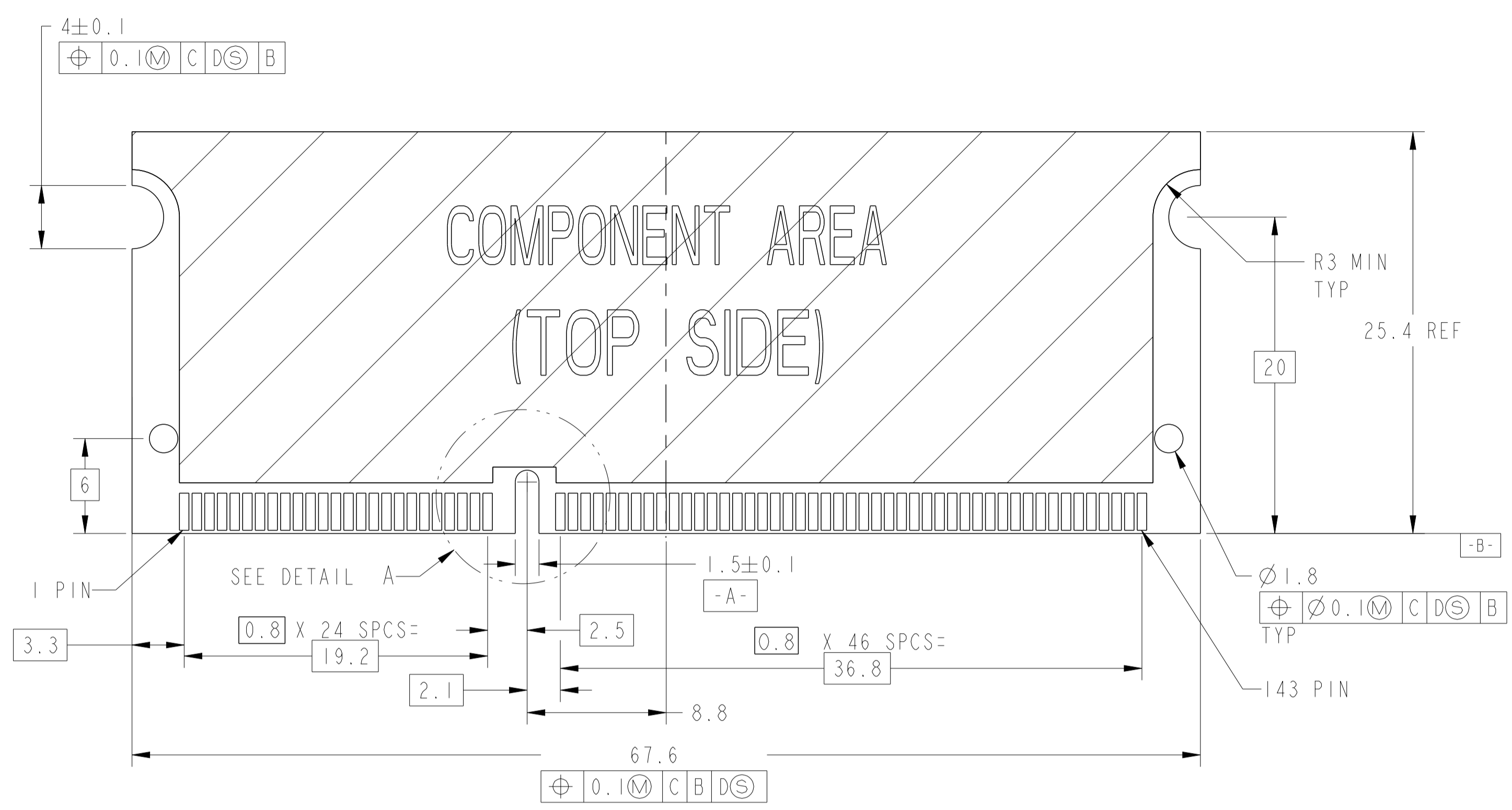
CUSTOMER DRAWING

NAME: S.O. DIMM. SOCKET ASSY. 0.8mm, 3.3V 144 POSITION, 3.7 MM PROFILE FOR SGRAM TYPE MODULE

SIZE: A | 00779 | C=390111

SCALE: 4:1 | SHEET: 1 OF 2 | REV: P1

REVISIONS				
P.	LTN	DESCRIPTION	DATE	APPD
-	-	SEE SHEET 1	-	-



THIS DRAWING IS A CONTROLLED DOCUMENT.		DWN: R. SORAH 6-23-97	TE Connectivity
DIMENSIONS: mm		CHK: R. TALLEY 6-23-97	
TOLERANCES UNLESS OTHERWISE SPECIFIED:		APPD: SE LEONG	NAME: S.O. DIMM. SOCKET ASSY. 0.8mm, 3.3V 144 POSITION, 3.7 MM PROFILE FOR SGRAM TYPE MODULE
0 PLC ±0.2	1 PLC ±0.2	PRODUCT SPEC	SIZE: CAGE CODE: DRAWING NO. RESTRICTED TO
2 PLC ±0.2	3 PLC ±0.2	APPLICATION SPEC	A 00779 C=390111
4 PLC ±0.2	ANGLES ±0.1	WEIGHT	CUSTOMER DRAWING SCALE: 4:1 SHEET 2 OF 2 REV: P1
MATERIAL: SEE TABLE		FINISH	