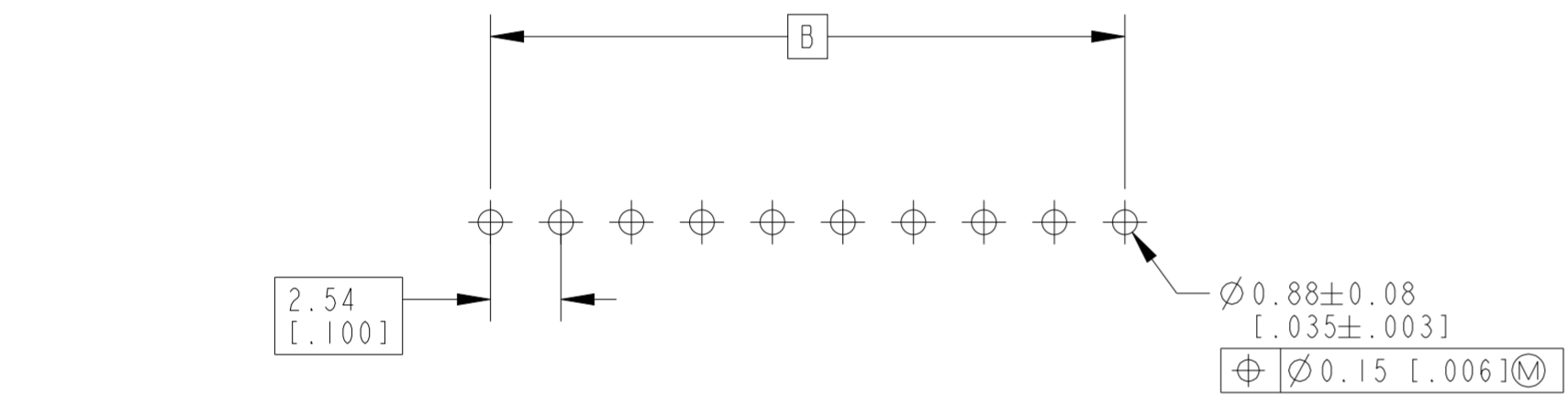
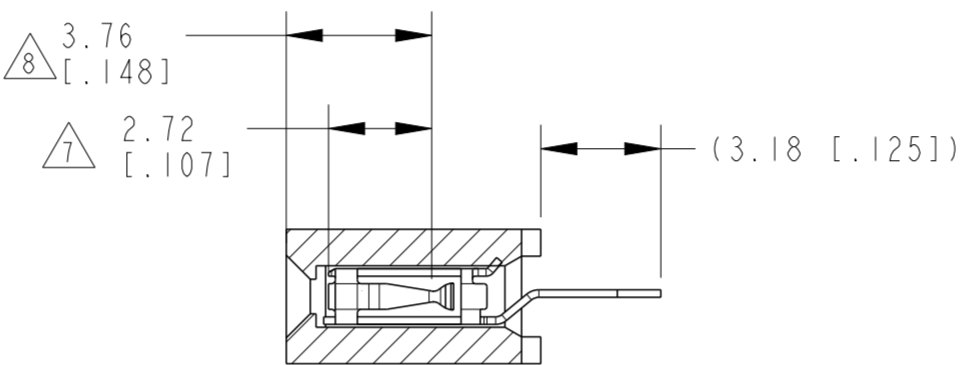
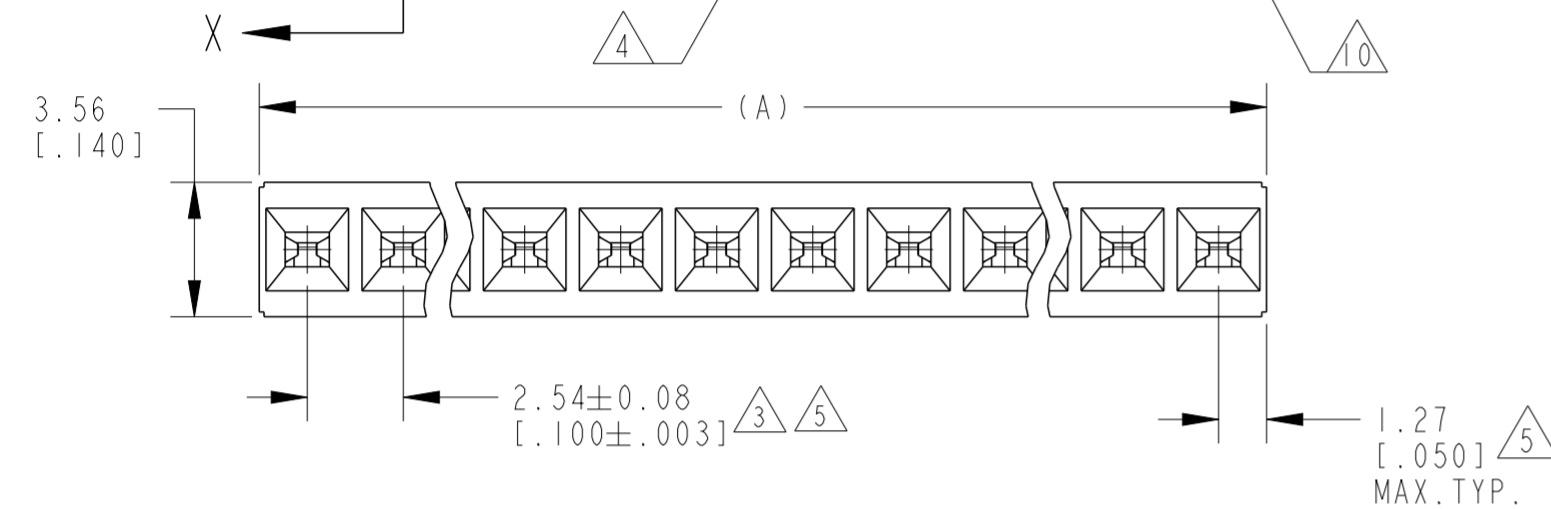
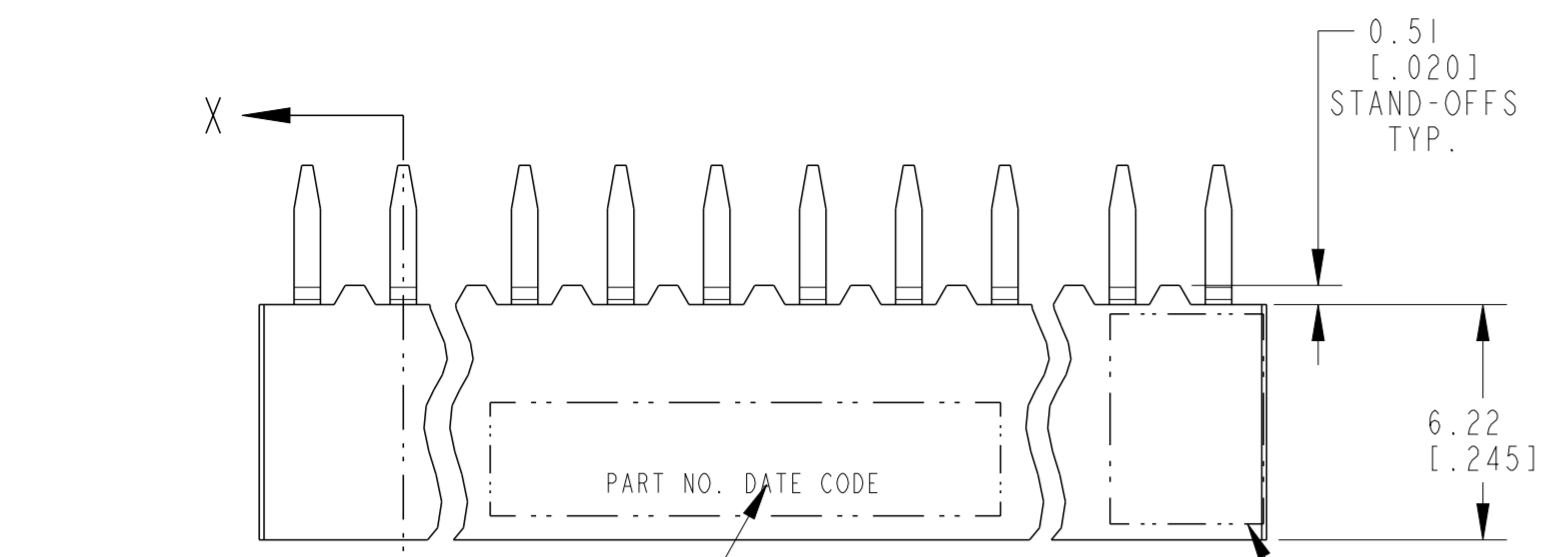


P	LTR	DESCRIPTION	DATE	DWN	APVD
M		RESIN SUPPLIER CHANGE FOR THE HOUSING	02DEC2021	SCB	KJK
N		WIDTH OF STANDOFF FEATURE IS INCREASED TO 0.71 [0.028]	18FEB2026	RS	GVP



OBsolete	2.54 [.100]	5.08 [.200]	2	△	△	3-146138-9
	96.52[3.800]	99.06[3.900]	39	△	△	3-146138-8
	93.98[3.700]	96.52[3.800]	38	△	△	3-146138-7
	91.44[3.600]	93.98[3.700]	37	△	△	3-146138-6
	88.90[3.500]	91.44[3.600]	36	△	△	3-146138-5
	86.36[3.400]	88.90[3.500]	35	△	△	3-146138-4
	83.82[3.300]	86.36[3.400]	34	△	△	3-146138-3
	81.28[3.200]	83.82[3.300]	33	△	△	3-146138-2
	78.74[3.100]	81.28[3.200]	32	△	△	3-146138-1
	71.12[2.800]	73.66[2.900]	29	△	△	3-146138-0
	68.58[2.700]	71.12[2.800]	28	△	△	2-146138-9
	66.04[2.600]	68.58[2.700]	27	△	△	2-146138-8
	63.50[2.500]	66.04[2.600]	26	△	△	2-146138-7
	60.96[2.400]	63.50[2.500]	25	△	△	2-146138-6
	58.42[2.300]	60.96[2.400]	24	△	△	2-146138-5
	55.88[2.200]	58.42[2.300]	23	△	△	2-146138-4
	53.34[2.100]	55.88[2.200]	22	△	△	2-146138-3
	50.80[2.000]	53.34[2.100]	21	△	△	2-146138-2
	76.20[3.000]	78.74[3.100]	31	△	△	2-146138-1
	99.06[3.900]	101.60[4.000]	40	△	△	2-146138-0
	73.66[2.900]	76.20[3.000]	30	△	△	1-146138-9
	48.26[1.900]	50.80[2.000]	20	△	△	1-146138-8
	45.72[1.800]	48.26[1.900]	19	△	△	1-146138-7
	43.18[1.700]	45.72[1.800]	18	△	△	1-146138-6
	40.64[1.600]	43.18[1.700]	17	△	△	1-146138-5
	38.10[1.500]	40.64[1.600]	16	△	△	1-146138-4
	35.56[1.400]	38.10[1.500]	15	△	△	1-146138-3
	33.02[1.300]	35.56[1.400]	14	△	△	1-146138-2
	30.48[1.200]	33.02[1.300]	13	△	△	1-146138-1
	27.94[1.100]	30.48[1.200]	12	△	△	1-146138-0
	25.40[1.000]	27.94[1.100]	11	△	△	146138-9
	22.86[.900]	25.40[1.000]	10	△	△	146138-8
	20.32[.800]	22.86[.900]	9	△	△	146138-7
	17.78[.700]	20.32[.800]	8	△	△	146138-6
	15.24[.600]	17.78[.700]	7	△	△	146138-5
	12.70[.500]	15.24[.600]	6	△	△	146138-4
	10.16[.400]	12.70[.500]	5	△	△	146138-3
	7.62[.300]	10.16[.400]	4	△	△	146138-2
	5.08[.200]	7.62[.300]	3	△	△	146138-1

B	A	NO. OF POSN	FINISH	PART NUMBER
---	---	-------------	--------	-------------

- 1 HOUSING: FLAME RETARDANT, GLASS FILLED, POLYESTER, COLOR: BLACK. CONTACT: PHOSPHOR BRONZE
- 2 CONTACT: DUPLEX PLATED 0.00025[.000010] MIN GOLD IN CONTACT AREA, 0.00381-0.00762[.000150 - .000300] BRIGHT TIN-LEAD ON LEADS ALL OVER 0.00127[.000050] NICKEL
- 3 THESE DIMENSIONS PERTAIN TO CAVITY CENTERLINES ONLY - NOT TO CONTACT LOCATIONS
- 4 MARK PART NUMBER AND DATE CODE IN APPROXIMATE LOCATION SHOWN, EITHER SIDE.
- 5 TOLERANCE IS NON-CUMULATIVE.
- 6 2 POSITION DATE CODE IS MARKED OPPOSITE SIDE OF TE CONNECTIVITY LOGO.
- 7 POINT-OF-MEASUREMENT DIMENSION FOR PLATING THICKNESS (INSIDE CONTACT BEAM).
- 8 POINT-OF-CONTACT DIMENSION.
- 9 NO PART NUMBER MARKING REQUIRED FOR THIS PART.
- 10 TE CONNECTIVITY LOGO AND CSA LOGO ARE MOLDED INTO HOUSING.
- 11 CONTACT: DUPLEX PLATED 0.00025[.000010] MIN GOLD IN CONTACT AREA, 0.00381-0.00762[.000150 - .000300] MATTE TIN ON LEADS, ALL OVER 0.00127[.000050] MIN. NICKEL.
- 12 ROHS 2002/95/EC COMPLIANT

THIS DRAWING IS A CONTROLLED DOCUMENT.

DWN M. BINNER 05NOV02
CHK J. OLSON 05NOV02
APVD J. OLSON 05NOV02

TE Connectivity

REC ASSY, MOD IV, SR, .100 CL
VRT BOARD MOUNT, CLOSED, TE
SHORT PNT. OF CONTACT


108-25022
114-25018

SIZE A2 CAGE CODE 00779 DRAWING NO. C-146138

CUSTOMER DRAWING SCALE 4:1 SHEET 1 OF 2 REV N

REVISIONS					
P	LTR	DESCRIPTION	DATE	DWN	APVD
-		SEE SHEET 1	-	-	-

OBSOLETE	B	A	NO. OF POSN	FINISH	PART NUMBER
	2.54[.100]	5.08[.200]	2	△	8-146138-9
	96.52[3.800]	99.06[3.900]	39	△	8-146138-8
	93.98[3.700]	96.52[3.800]	38	△	8-146138-7
	91.44[3.600]	93.98[3.700]	37	△	8-146138-6
	88.90[3.500]	91.44[3.600]	36	△	8-146138-5
	86.36[3.400]	88.90[3.500]	35	△	8-146138-4
	83.82[3.300]	86.36[3.400]	34	△	8-146138-3
	81.28[3.200]	83.82[3.300]	33	△	8-146138-2
	78.74[3.100]	81.28[3.200]	32	△	8-146138-1
	71.12[2.800]	73.66[2.900]	29	△	8-146138-0
	68.58[2.700]	71.12[2.800]	28	△	7-146138-9
	66.04[2.600]	68.58[2.700]	27	△	7-146138-8
	63.50[2.500]	66.04[2.600]	26	△	7-146138-7
	60.96[2.400]	63.50[2.500]	25	△	7-146138-6
	58.42[2.300]	60.96[2.400]	24	△	7-146138-5
	55.88[2.200]	58.42[2.300]	23	△	7-146138-4
	53.34[2.100]	55.88[2.200]	22	△	7-146138-3
	50.80[2.000]	53.34[2.100]	21	△	7-146138-2
	76.20[3.000]	78.74[3.100]	31	△	7-146138-1
	99.06[3.900]	101.60[4.000]	40	△	7-146138-0
	73.66[2.900]	76.20[3.000]	30	△	6-146138-9
	48.26[1.900]	50.80[2.000]	20	△	6-146138-8
	45.72[1.800]	48.26[1.900]	19	△	6-146138-7
	43.18[1.700]	45.72[1.800]	18	△	6-146138-6
	40.64[1.600]	43.18[1.700]	17	△	6-146138-5
	38.10[1.500]	40.64[1.600]	16	△	6-146138-4
	35.56[1.400]	38.10[1.500]	15	△	6-146138-3
	33.02[1.300]	35.56[1.400]	14	△	6-146138-2
	30.48[1.200]	33.02[1.300]	13	△	6-146138-1
	27.94[1.100]	30.48[1.200]	12	△	6-146138-0
	25.40[1.000]	27.94[1.100]	11	△	5-146138-9
	22.86[.900]	25.40[1.000]	10	△	5-146138-8
	20.32[.800]	22.86[.900]	9	△	5-146138-7
	17.78[.700]	20.32[.800]	8	△	5-146138-6
	15.24[.600]	17.78[.700]	7	△	5-146138-5
	12.70[.500]	15.24[.600]	6	△	5-146138-4
9	10.16[.400]	12.70[.500]	5	△	5-146138-3
9	7.62[.300]	10.16[.400]	4	△	5-146138-2
9	5.08[.200]	7.62[.300]	3	△	5-146138-1

THIS DRAWING IS A CONTROLLED DOCUMENT.		DWN M. BINNER 05NOV02	 TE Connectivity	
		CHK J. OLSON 05NOV02		
DIMENSIONS: mm [INCHES]		APVD J. OLSON 05NOV02	NAME REC ASSY, MOD IV, SR, .100 CL VRT BOARD MOUNT, CLOSED, TE SHORT PNT. OF CONTACT	
TOLERANCES UNLESS OTHERWISE SPECIFIED: 0 PLC ± 1 PLC ± 2 PLC ±0.25[.010] 3 PLC ±0.13[.005] 4 PLC ± ANGLES ±		PRODUCT SPEC 108-25022	RESTRICTED TO	
MATERIAL △1		APPLICATION SPEC 114-25018	SIZE A2	CAGE CODE 00779
FINISH △2 △1		WEIGHT -	DRAWING NO C-146138	SCALE 4:1
		CUSTOMER DRAWING	SHEET 2	REV N