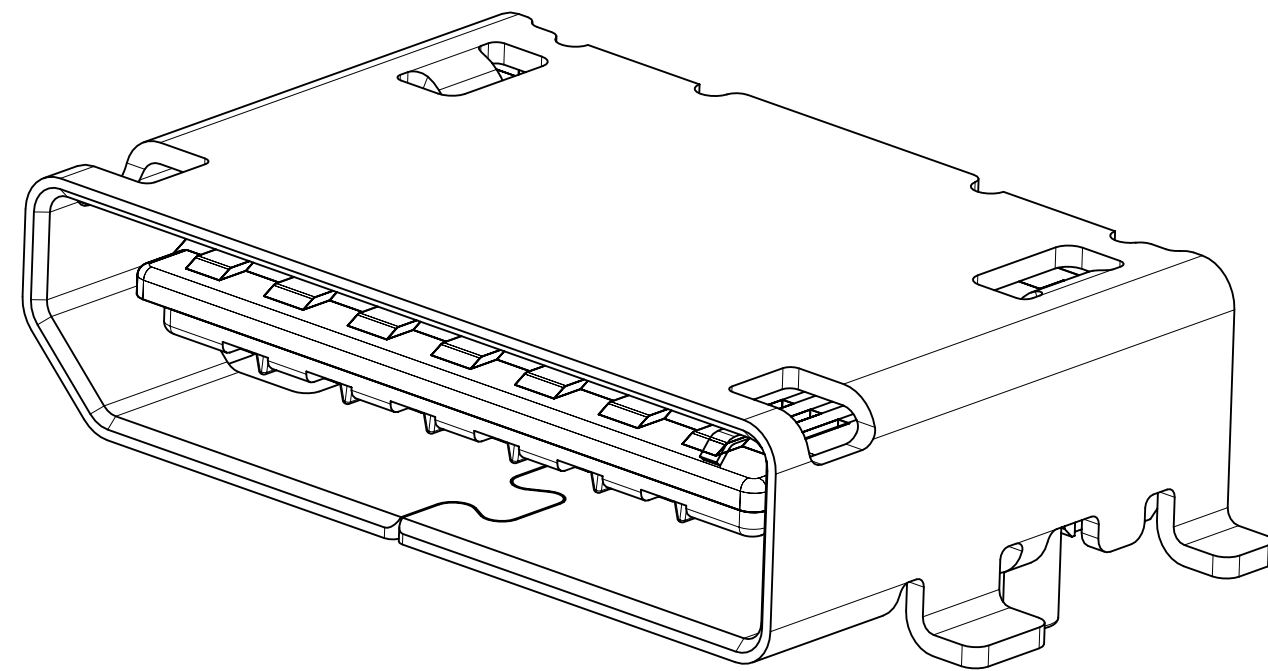
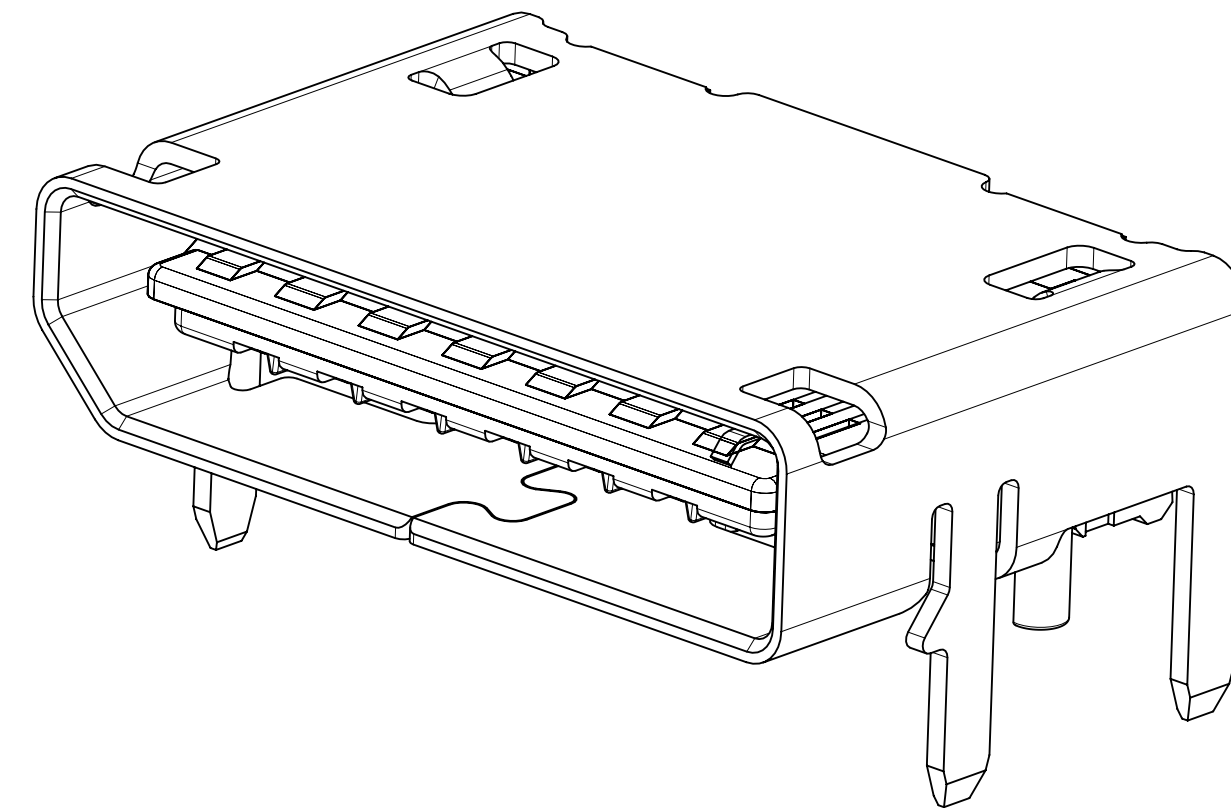


42 CIRCUIT SMT SHELL



42 CIRCUIT THRU HOLE SHELL




NOTES:

1. MATERIALS:
HOUSING - LCP, GLASS FILLED THERMOPLASTIC, 94V-0
CONTACTS - HIGH PERFORMANCE COPPER ALLOY
SHIELD - STAINLESS STEEL
2. FINISH:
CONTACTS - 0.76µm MIN. GOLD MATING SIDE
0.05µm GOLD FLASH ON SOLDER TAILS
1.27µm MIN. NICKEL UNDERPLATE OVERALL

SHIELD - MATTE TIN OVER 1.27µm MIN. NICKEL
3. PRODUCT SPECIFICATION: PS-173162-0001
4. PACKAGING SPECIFICATION: PK-173307-0001
5. MATES WITH: MOLEX CABLE SERIES 100436
PER INDUSTRY STANDARD PCIe OCuLink OR SFF-8612
6. APPLICATION SPECIFICATION: AS-173162-0001
7. COSMETIC SPECIFICATION: PS-45499-002 CALASS B

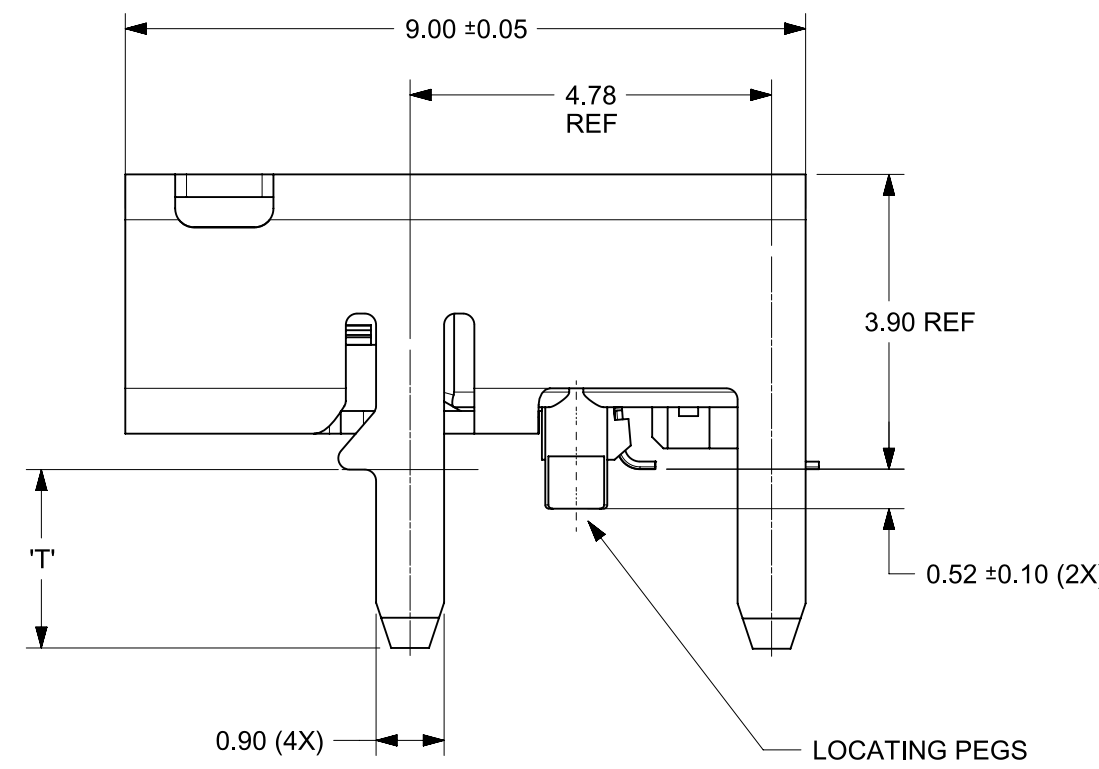
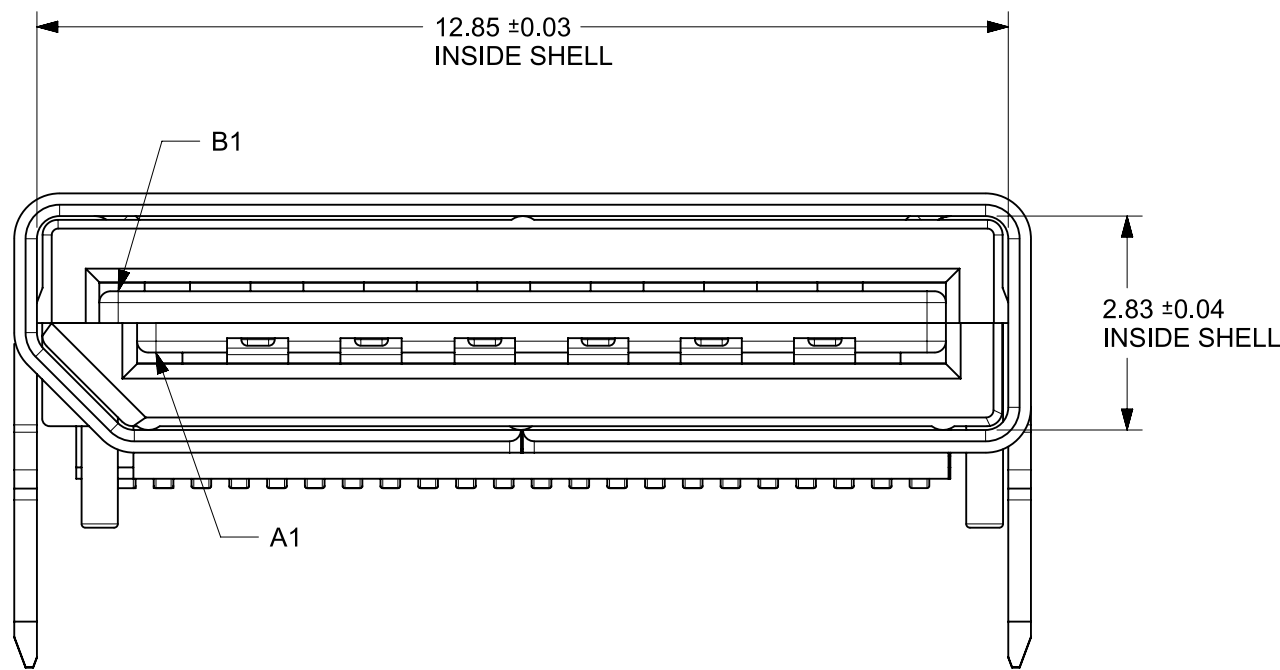
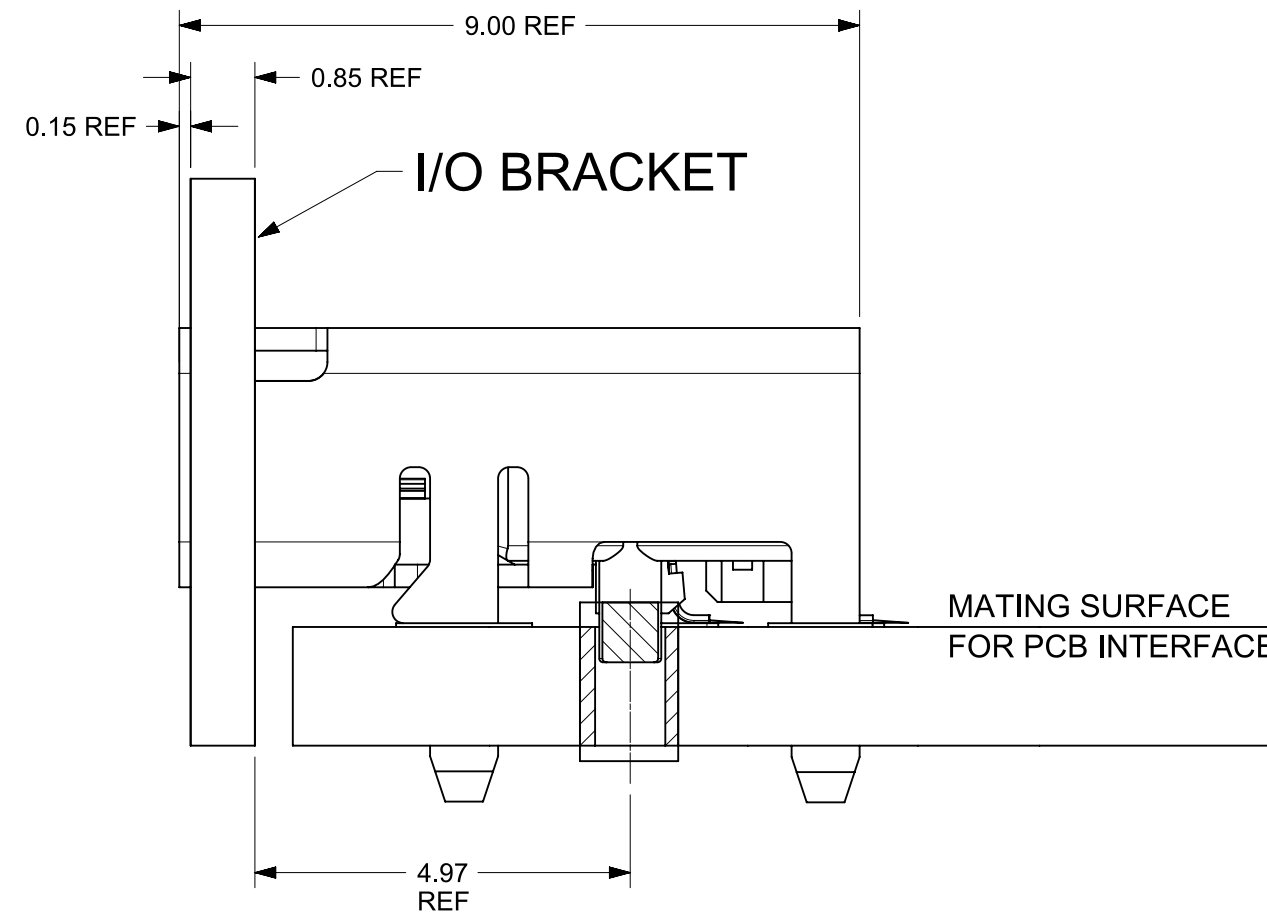
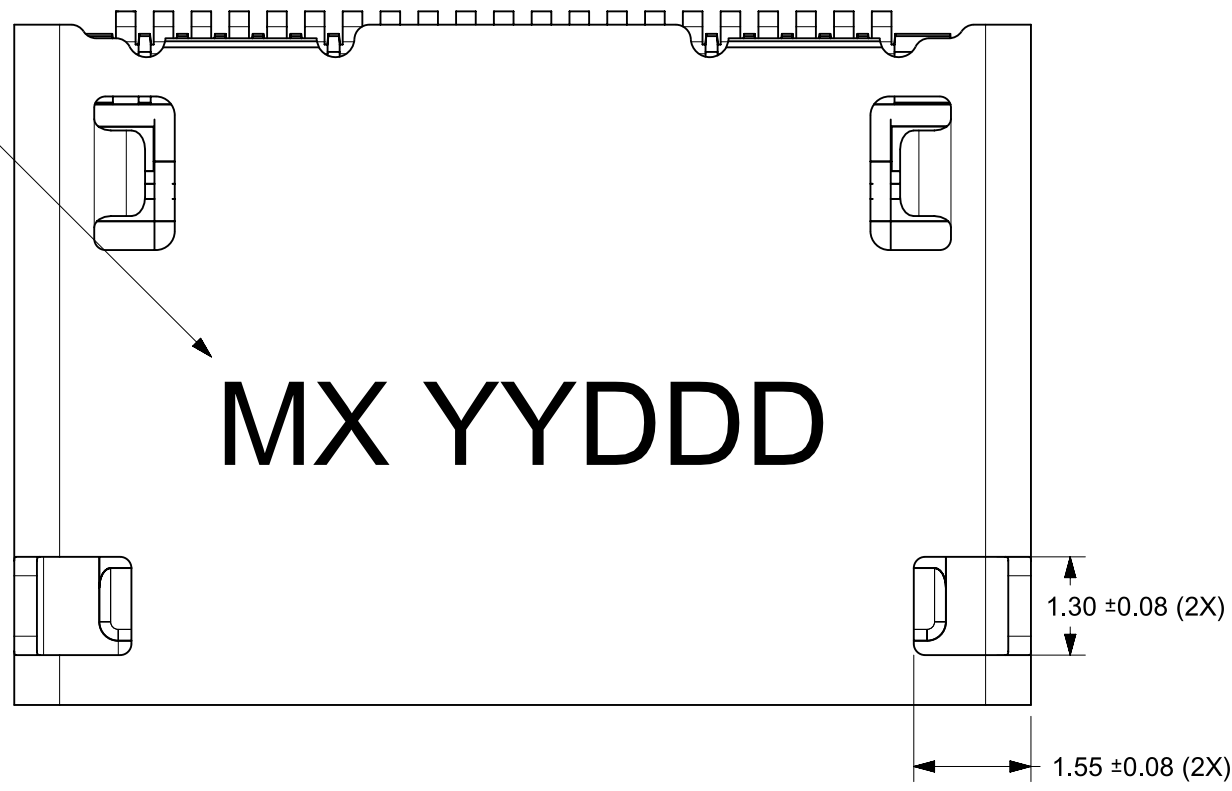
| STATUS | MATERIAL NUMBER | SHELL ATTACH OPTION | DIM 'T' |
|--------|-----------------|---------------------|---------|
| TOOLED | 171982-0142 | SMT | - |
| TOOLED | 171982-1142 | TH | 3 |
| TOOLED | 171982-3142 | TH | 1.57 |

| | | | | | | | | | | |
|---|---------|---|--|--|---|--|--|----------------|----------|--------------|
| THIS DRAWING CONTAINS INFORMATION THAT IS PROPRIETARY TO MOLEX ELECTRONIC TECHNOLOGIES, LLC AND SHOULD NOT BE USED WITHOUT WRITTEN PERMISSION | | | | | | | | | | |
| DIMENSION UNITS | SCALE | CURRENT REV DESC: REMOVED OBSOLETE PART NUMBER AS PER PCN #516666 | | |  NANO-PITCH I/O RIGHT ANGLE 4X | | | | | |
| MM | 10:1 | | | | | | | | | |
| GENERAL TOLERANCES (UNLESS SPECIFIED) | | STATUS: Production DRWN: Pranav Arunkumar 2026-03-04 CHK'D: Ganesh Rao B 2026-03-27 APPR: Gurunandan GA 2026-03-27 | | | PRODUCT CUSTOMER DRAWING | | | | | |
| ANGULAR TOL | ± 0.5° | | | | DOCUMENT NUMBER | | | DOC TYPE | DOC PART | REVISION |
| 4 PLACES | ± | | | | SD-171982-1000 | | | PSD | 001 | J4 |
| 3 PLACES | ± | | | | MATERIAL NUMBER | | | CUSTOMER | | SHEET NUMBER |
| 2 PLACES | ± 0.130 | | | | SEE TABLE | | | GENERAL MARKET | | 1 OF 6 |
| 1 PLACE | ± 0.25 | THIRD ANGLE PROJECTION | | | | | | | | |
| 0 PLACES | ± | DRAWING | | | | | | | | |
| DRAFT WHERE APPLICABLE MUST REMAIN WITHIN DIMENSIONS | | C-SIZE | | | SERIES | | | | | |
| | | 171982 | | | | | | | | |

42 CIRCUIT TH ASSEMBLY

EXTERNAL

SEE NOTE #1

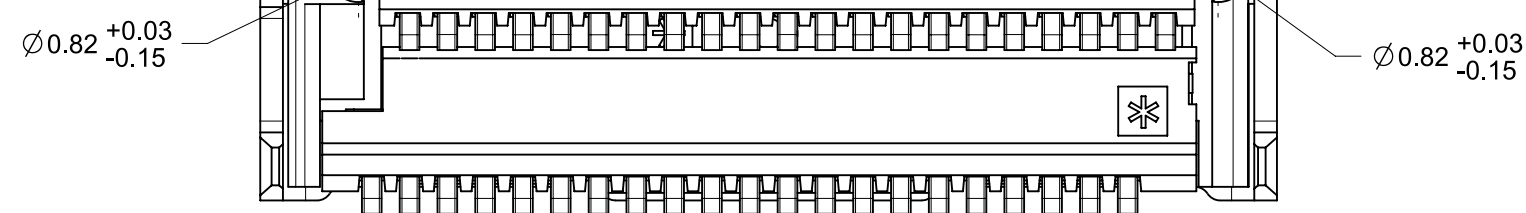


NOTES:

1. MANUFACTURED DATE CODE (JULIAN CALENDAR)
MX YYDDD

DAY OF THE YEAR
LAST TWO DIGITS OF THE YEAR
MOLEX

2. SOLDER TAIL COPLANARITY 0.10 MAX

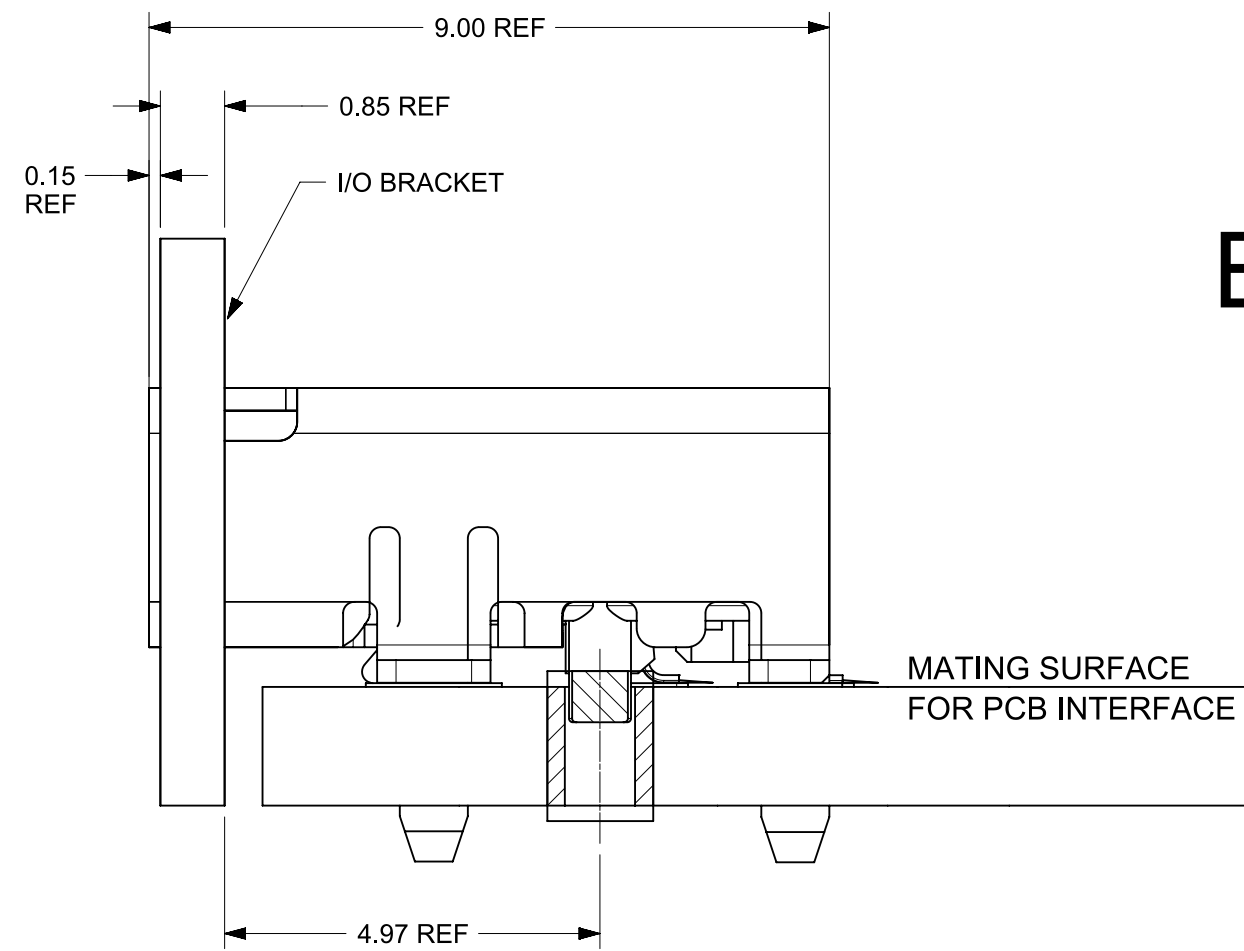
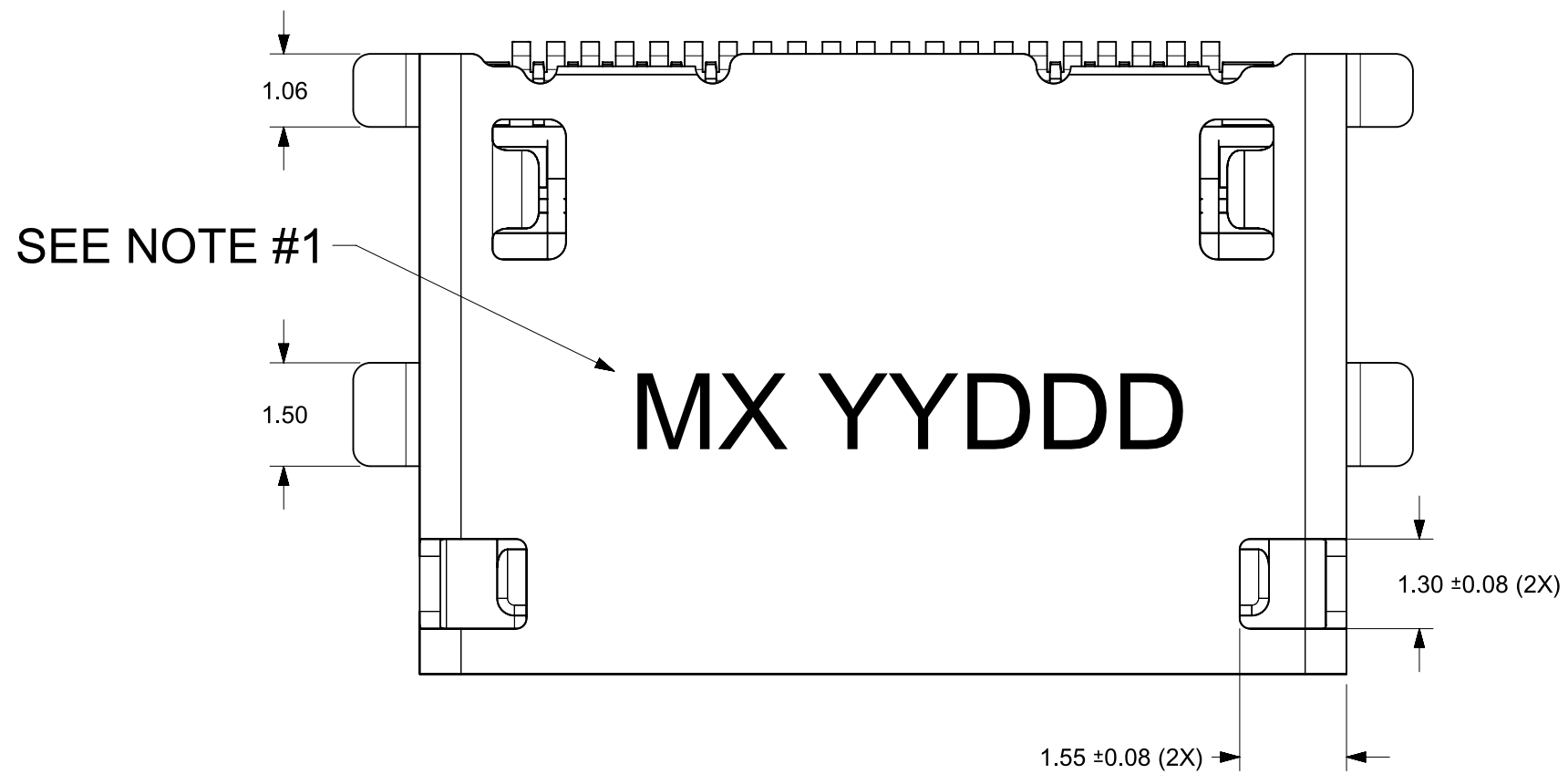


| | | | | | | | | | | | | | | | | | | | | | | | | | |
|---|--|-------|--|---|--|---------|--|----------------|--|-----------------|--|-----------------|----------|----------|--|----------|----------|----------|----------------|--|--|--|-----|-----|----|
| THIS DRAWING CONTAINS INFORMATION THAT IS PROPRIETARY TO MOLEX ELECTRONIC TECHNOLOGIES, LLC AND SHOULD NOT BE USED WITHOUT WRITTEN PERMISSION | | | | | | | | | | | | | | | | | | | | | | | | | |
| DIMENSION UNITS | | SCALE | | CURRENT REV DESC: REMOVED OBSOLETE PART NUMBER AS PER PCN #516666 | | | | | | | | | | | | | | | | | | | | | |
| MM | | 10:1 | | <p>molex</p> <p>NANO-PITCH I/O RIGHT ANGLE 4X</p> <p>PRODUCT CUSTOMER DRAWING</p> <table border="1"> <tr> <td colspan="4">DOCUMENT NUMBER</td> <td>DOC TYPE</td> <td>DOC PART</td> <td>REVISION</td> </tr> <tr> <td colspan="4">SD-171982-1000</td> <td>PSD</td> <td>001</td> <td>J4</td> </tr> </table> | | | | | | | | DOCUMENT NUMBER | | | | DOC TYPE | DOC PART | REVISION | SD-171982-1000 | | | | PSD | 001 | J4 |
| DOCUMENT NUMBER | | | | | | | | | | | | DOC TYPE | DOC PART | REVISION | | | | | | | | | | | |
| SD-171982-1000 | | | | | | | | | | | | PSD | 001 | J4 | | | | | | | | | | | |
| GENERAL TOLERANCES (UNLESS SPECIFIED) | | | | | | | | | | | | | | | | | | | | | | | | | |
| ANGULAR TOL ± 0.5° | | | | | | | | | | | | | | | | | | | | | | | | | |
| 4 PLACES ± | | | | | | | | | | | | | | | | | | | | | | | | | |
| 3 PLACES ± | | | | | | | | | | | | | | | | | | | | | | | | | |
| 2 PLACES ± 0.130 | | | | | | | | | | | | | | | | | | | | | | | | | |
| 1 PLACE ± 0.25 | | | | | | | | | | | | | | | | | | | | | | | | | |
| 0 PLACES ± | | | | | | | | | | | | | | | | | | | | | | | | | |
| DRAFT WHERE APPLICABLE MUST REMAIN WITHIN DIMENSIONS | | | | THIRD ANGLE PROJECTION | | DRAWING | | SERIES | | MATERIAL NUMBER | | | | | | | | | | | | | | | |
| | | | | C-SIZE | | 171982 | | SEE TABLE | | CUSTOMER | | | | | | | | | | | | | | | |
| | | | | | | | | GENERAL MARKET | | SHEET NUMBER | | | | | | | | | | | | | | | |
| | | | | | | | | 2 OF 6 | | | | | | | | | | | | | | | | | |

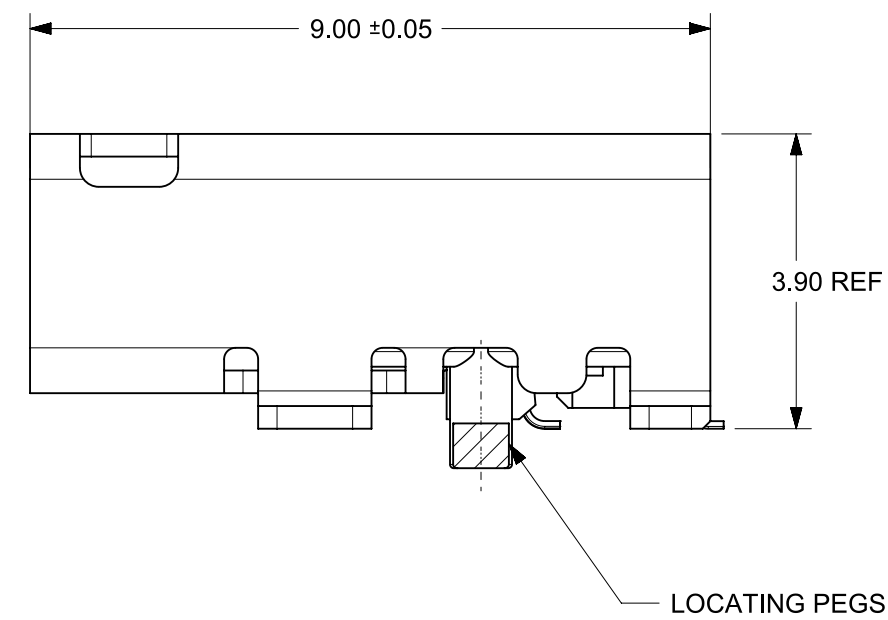
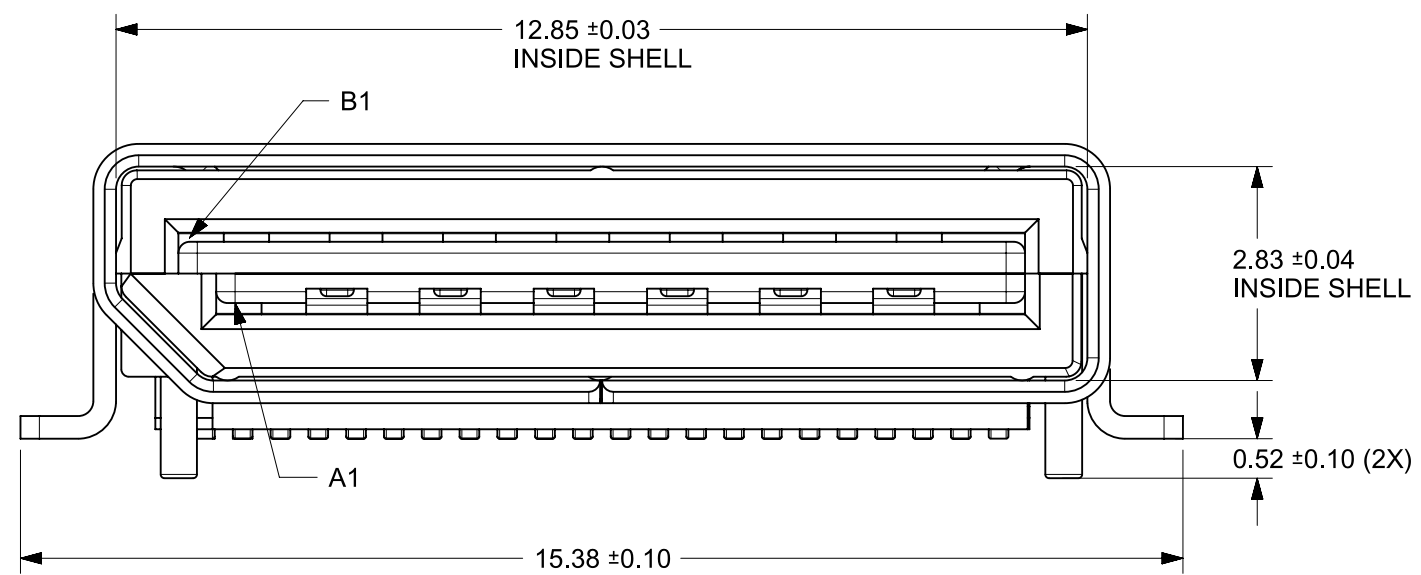
STATUS: Production
DRWN: Pranav Arunkumar 2026-03-04
CHK'D: Ganesh Rao B 2026-03-27
APPR: Gurunandan GA 2026-03-27

DOCUMENT NUMBER: SD-171982-1000
DOC TYPE: PSD
DOC PART: 001
REVISION: J4
MATERIAL NUMBER: SEE TABLE
CUSTOMER: GENERAL MARKET
SHEET NUMBER: 2 OF 6

42 CIRCUIT SMT ASSEMBLY



EXTERNAL



NOTES:

1. MANUFACTURED DATE CODE (JULIAN CALENDAR)

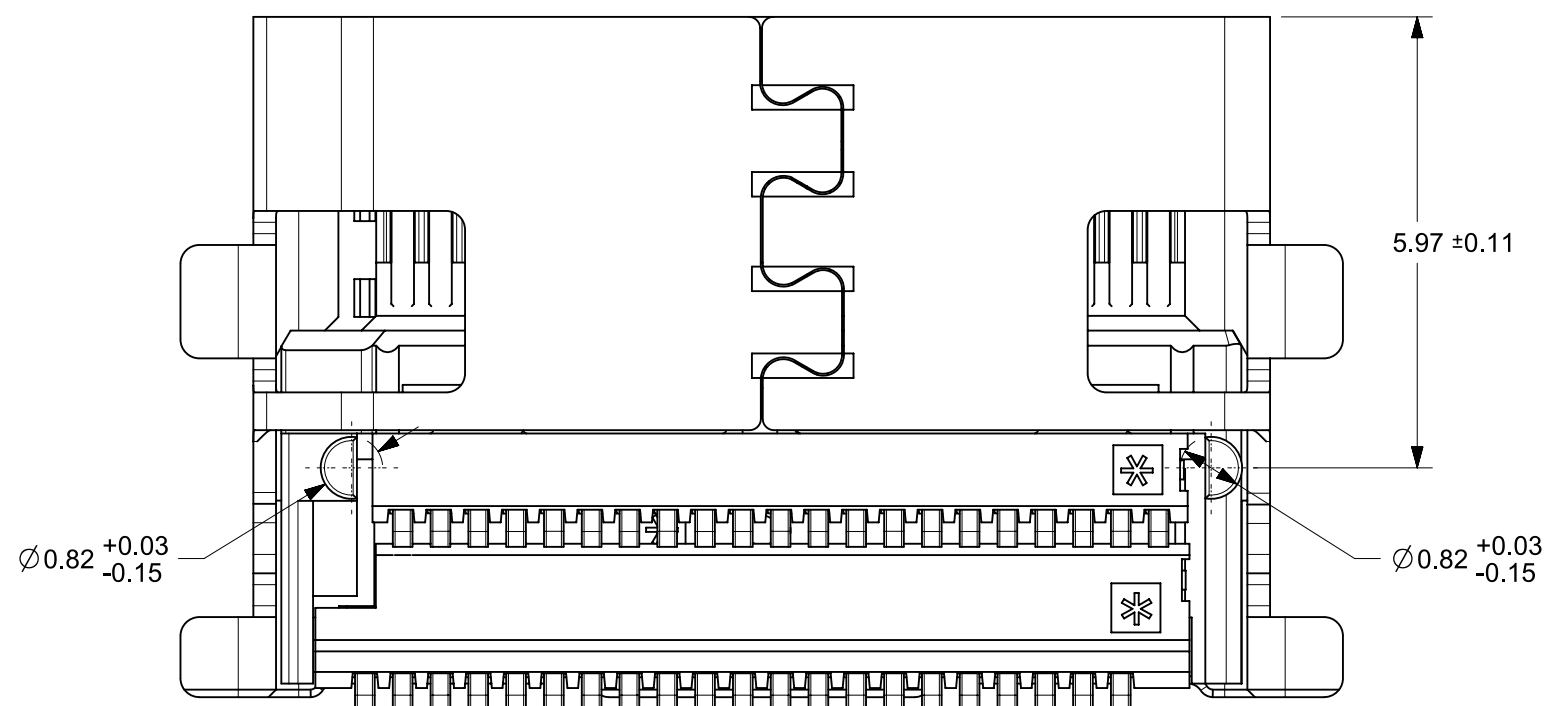
MX YYDDD

DAY OF THE YEAR

LAST TWO DIGITS OF THE YEAR

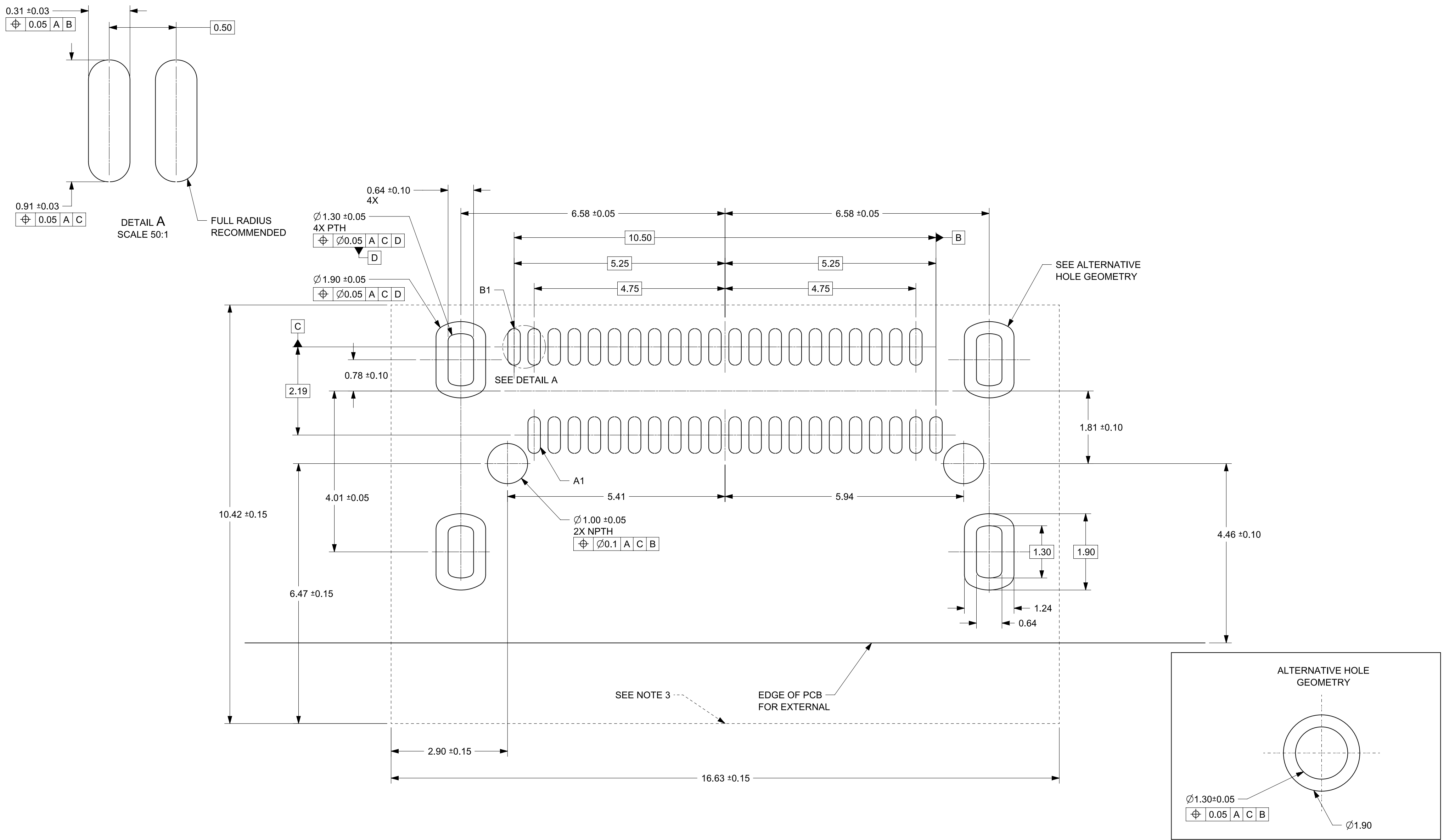
MOLEX

2. SOLDER TAIL COPLANARITY 0.10 MAX




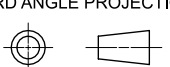
| | | | | | | | | | | | |
|---|--|----------------------|--|---|--|------------------------|--|-----------------|--|----------------|--|
| THIS DRAWING CONTAINS INFORMATION THAT IS PROPRIETARY TO MOLEX ELECTRONIC TECHNOLOGIES, LLC AND SHOULD NOT BE USED WITHOUT WRITTEN PERMISSION | | | | | | | | | | | |
| DIMENSION UNITS MM | | SCALE 10:1 | | CURRENT REV DESC: REMOVED OBSOLETE PART NUMBER AS PER PCN #516666 | | | | | | molex | |
| GENERAL TOLERANCES (UNLESS SPECIFIED) | | | | STATUS: Production | | 2026-03-04 | | DOCUMENT NUMBER | | | |
| ANGULAR TOL ± 0.5° | | | | DRWN: Pranav Arunkumar | | 2026-03-27 | | SD-171982-1000 | | PSD 001 J4 | |
| 4 PLACES ± | | | | CHK'D: Ganesh Rao B | | 2026-03-27 | | MATERIAL NUMBER | | CUSTOMER | |
| 3 PLACES ± | | | | APPR: Gurunandan GA | | 2026-03-27 | | SEE TABLE | | GENERAL MARKET | |
| 2 PLACES ± 0.130 | | | | DRAFT WHERE APPLICABLE MUST REMAIN WITHIN DIMENSIONS | | THIRD ANGLE PROJECTION | | DRAWING | | SHEET NUMBER | |
| 1 PLACE ± 0.25 | | | | C-SIZE | | SERIES | | 171982 | | 3 OF 6 | |
| 0 PLACES ± | | | | C-SIZE | | SERIES | | 171982 | | 3 OF 6 | |

42 CIRCUIT TAIL RECOMMENDED FOOTPRINT

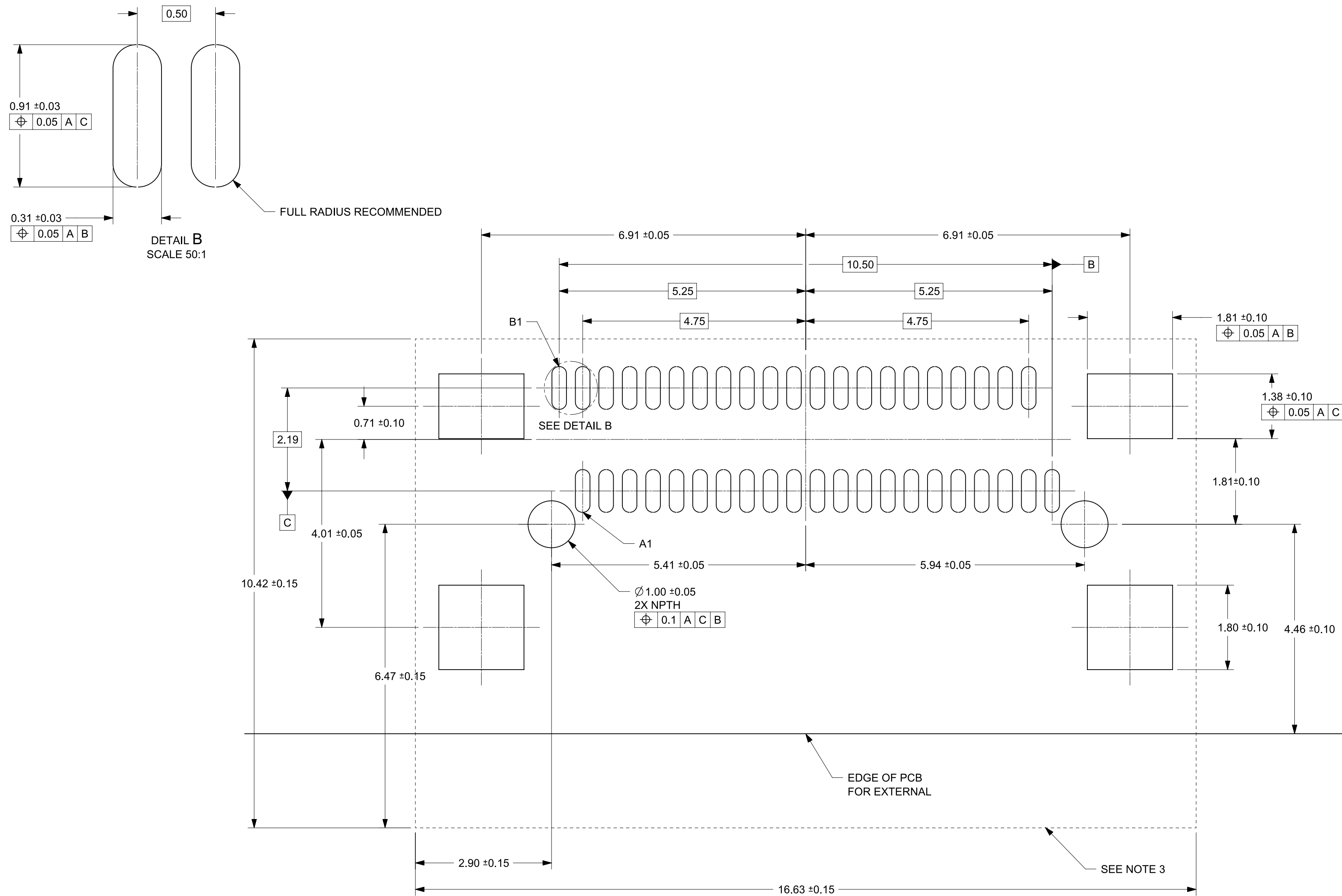


NOTES:

1. MINIMUM RECOMMENDED SPACING BETWEEN ADJACENT CONNECTOR IS 19.05mm
2. MINIMUM RECOMMENDED PCB THICKNESS: 1.57mm
3. CONNECTOR KEEP OUT AREA
4. DATUM -A- ESTABLISHED FROM TOP SURFACE OF PCB

| | | | | | | | | | | | |
|---|--|-------|--|---|--|------------|--|-----------------|--|--------------------------------|--|
| THIS DRAWING CONTAINS INFORMATION THAT IS PROPRIETARY TO MOLEX ELECTRONIC TECHNOLOGIES, LLC AND SHOULD NOT BE USED WITHOUT WRITTEN PERMISSION | | | | | | | | | | | |
| DIMENSION UNITS | | SCALE | | CURRENT REV DESC: REMOVED OBSOLETE PART NUMBER AS PER PCN #516666 | | | | | | | |
| MM | | 15:1 | |  NANO-PITCH I/O RIGHT ANGLE 4X PRODUCT CUSTOMER DRAWING | | | | | | | |
| GENERAL TOLERANCES (UNLESS SPECIFIED) | | | | | | | | | | | |
| ANGULAR TOL ± 0.5° | | | | | | | | | | | |
| 4 PLACES ± | | | | | | | | | | | |
| 3 PLACES ± | | | | | | | | | | | |
| 2 PLACES ± 0.130 | | | | | | | | | | | |
| 1 PLACE ± 0.25 | | | | STATUS: Production | | 2026-03-04 | | DOCUMENT NUMBER | | DOC TYPE DOC PART REVISION | |
| 0 PLACES ± | | | | DRWN: Pranav Arunkumar | | 2026-03-27 | | SD-171982-1000 | | PSD 001 J4 | |
| DRAFT WHERE APPLICABLE MUST REMAIN WITHIN DIMENSIONS | | | | THIRD ANGLE PROJECTION | | DRAWING | | SERIES | | MATERIAL NUMBER | |
| | | | |  | | C-SIZE | | 171982 | | CUSTOMER | |
| | | | | | | | | GENERAL MARKET | | SHEET NUMBER | |
| | | | | | | | | SEE TABLE | | 4 OF 6 | |

42 CIRCUIT SMT RECOMMENDED FOOTPRINT



NOTES:

1. MINIMUM RECOMMENDED SPACING BETWEEN ADJACENT CONNECTOR IS 19.05mm
2. MINIMUM RECOMMENDED PCB THICKNESS: 1.57mm
3. CONNECTOR KEEP OUT AREA
4. DATUM -A- ESTABLISHED FROM TOP SURFACE OF PCB

| | | | | | | | | | | | | | | | | | | | | | | | | | | | | | | | | | | | | | | | | | | | | | |
|---|--|------------------------|----------|--|--|------------|--|------------------------|--|--|--|--------------|--|--|--|----------------------------------|--|--|--|--------------------------|--|--|--|-----------------|--|----------|----------|----------|----------------|--|-----|-----|----|-----------------|--|----------|--|--------------|--|-----------|--|----------------|--|--------|--|
| THIS DRAWING CONTAINS INFORMATION THAT IS PROPRIETARY TO MOLEX ELECTRONIC TECHNOLOGIES, LLC AND SHOULD NOT BE USED WITHOUT WRITTEN PERMISSION | | | | | | | | | | | | | | | | | | | | | | | | | | | | | | | | | | | | | | | | | | | | | |
| DIMENSION UNITS | | SCALE | | CURRENT REV DESC: REMOVED OBSOLETE PART NUMBER AS PER PCN #516666 | | | | | | | | | | | | | | | | | | | | | | | | | | | | | | | | | | | | | | | | | |
| MM | | 15:1 | | <table border="1"> <tr> <td colspan="4" style="text-align: center;">molex</td> </tr> <tr> <td colspan="4" style="text-align: center;">NANO-PITCH I/O RIGHT ANGLE 4X</td> </tr> <tr> <td colspan="4" style="text-align: center;">PRODUCT CUSTOMER DRAWING</td> </tr> <tr> <td colspan="2">DOCUMENT NUMBER</td> <td>DOC TYPE</td> <td>DOC PART</td> <td>REVISION</td> </tr> <tr> <td colspan="2" style="text-align: center;">SD-171982-1000</td> <td style="text-align: center;">PSD</td> <td style="text-align: center;">001</td> <td style="text-align: center;">J4</td> </tr> <tr> <td colspan="2">MATERIAL NUMBER</td> <td colspan="2">CUSTOMER</td> <td colspan="2">SHEET NUMBER</td> </tr> <tr> <td colspan="2">SEE TABLE</td> <td colspan="2">GENERAL MARKET</td> <td colspan="2">5 OF 6</td> </tr> </table> | | | | | | | | molex | | | | NANO-PITCH I/O RIGHT ANGLE 4X | | | | PRODUCT CUSTOMER DRAWING | | | | DOCUMENT NUMBER | | DOC TYPE | DOC PART | REVISION | SD-171982-1000 | | PSD | 001 | J4 | MATERIAL NUMBER | | CUSTOMER | | SHEET NUMBER | | SEE TABLE | | GENERAL MARKET | | 5 OF 6 | |
| molex | | | | | | | | | | | | | | | | | | | | | | | | | | | | | | | | | | | | | | | | | | | | | |
| NANO-PITCH I/O RIGHT ANGLE 4X | | | | | | | | | | | | | | | | | | | | | | | | | | | | | | | | | | | | | | | | | | | | | |
| PRODUCT CUSTOMER DRAWING | | | | | | | | | | | | | | | | | | | | | | | | | | | | | | | | | | | | | | | | | | | | | |
| DOCUMENT NUMBER | | DOC TYPE | DOC PART | | | | | | | | | REVISION | | | | | | | | | | | | | | | | | | | | | | | | | | | | | | | | | |
| SD-171982-1000 | | PSD | 001 | J4 | | | | | | | | | | | | | | | | | | | | | | | | | | | | | | | | | | | | | | | | | |
| MATERIAL NUMBER | | CUSTOMER | | SHEET NUMBER | | | | | | | | | | | | | | | | | | | | | | | | | | | | | | | | | | | | | | | | | |
| SEE TABLE | | GENERAL MARKET | | 5 OF 6 | | | | | | | | | | | | | | | | | | | | | | | | | | | | | | | | | | | | | | | | | |
| GENERAL TOLERANCES (UNLESS SPECIFIED) | | | | | | | | | | | | | | | | | | | | | | | | | | | | | | | | | | | | | | | | | | | | | |
| ANGULAR TOL ± 0.5° | | | | | | | | | | | | | | | | | | | | | | | | | | | | | | | | | | | | | | | | | | | | | |
| 4 PLACES ± | | | | | | | | | | | | | | | | | | | | | | | | | | | | | | | | | | | | | | | | | | | | | |
| 3 PLACES ± | | | | | | | | | | | | | | | | | | | | | | | | | | | | | | | | | | | | | | | | | | | | | |
| 2 PLACES ± 0.130 | | | | | | | | | | | | | | | | | | | | | | | | | | | | | | | | | | | | | | | | | | | | | |
| 1 PLACE ± 0.25 | | | | | | | | | | | | | | | | | | | | | | | | | | | | | | | | | | | | | | | | | | | | | |
| 0 PLACES ± | | | | | | | | | | | | | | | | | | | | | | | | | | | | | | | | | | | | | | | | | | | | | |
| DRAFT WHERE APPLICABLE MUST REMAIN WITHIN DIMENSIONS | | THIRD ANGLE PROJECTION | | DRAWING | | SERIES | | STATUS: Production | | | | | | | | | | | | | | | | | | | | | | | | | | | | | | | | | | | | | |
| | | C-SIZE | | 171982 | | 2026-03-04 | | DRWN: Pranav Arunkumar | | | | | | | | | | | | | | | | | | | | | | | | | | | | | | | | | | | | | |
| | | | | | | 2026-03-27 | | CHK'D: Ganesh Rao B | | | | | | | | | | | | | | | | | | | | | | | | | | | | | | | | | | | | | |
| | | | | | | 2026-03-27 | | APPR: Gurunandan GA | | | | | | | | | | | | | | | | | | | | | | | | | | | | | | | | | | | | | |

