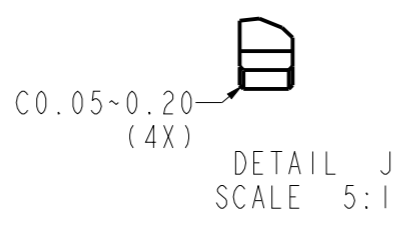
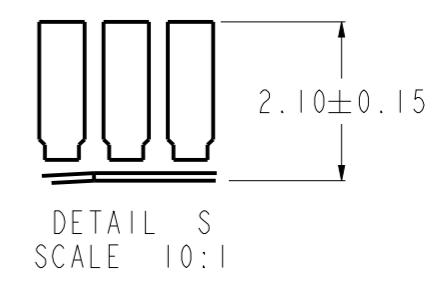
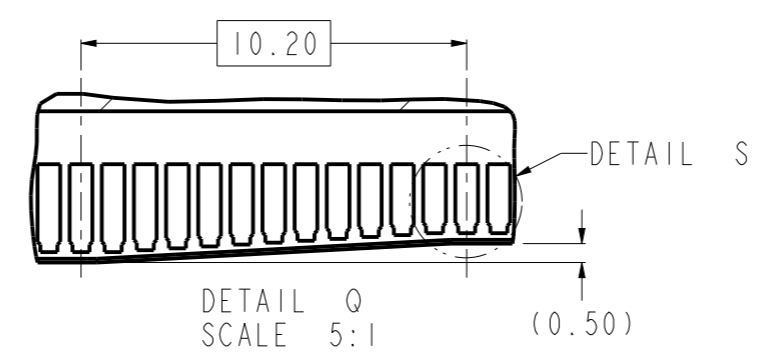
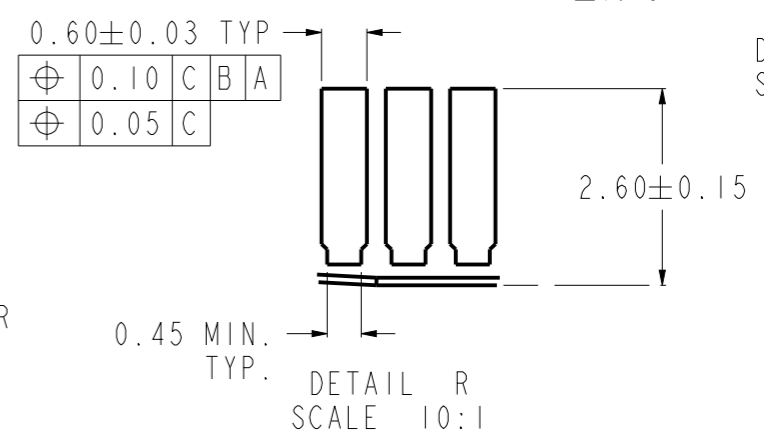
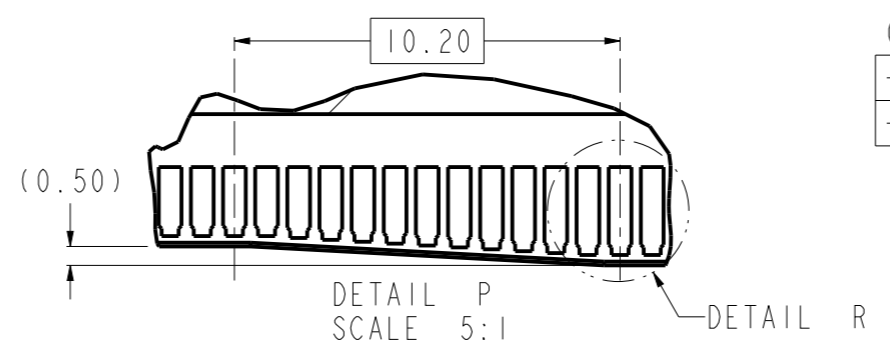
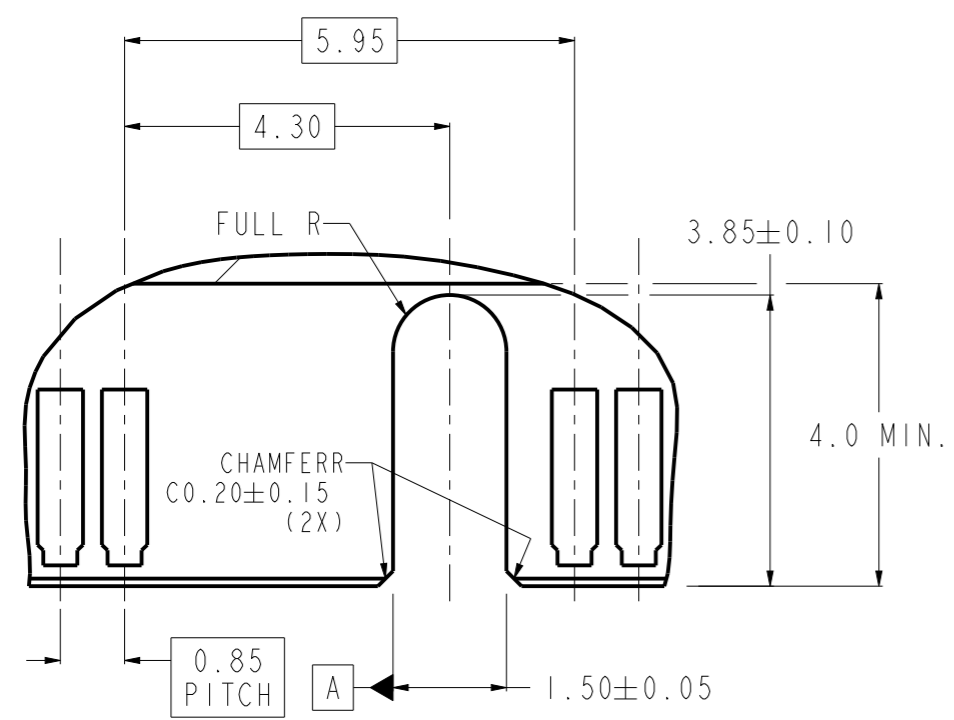
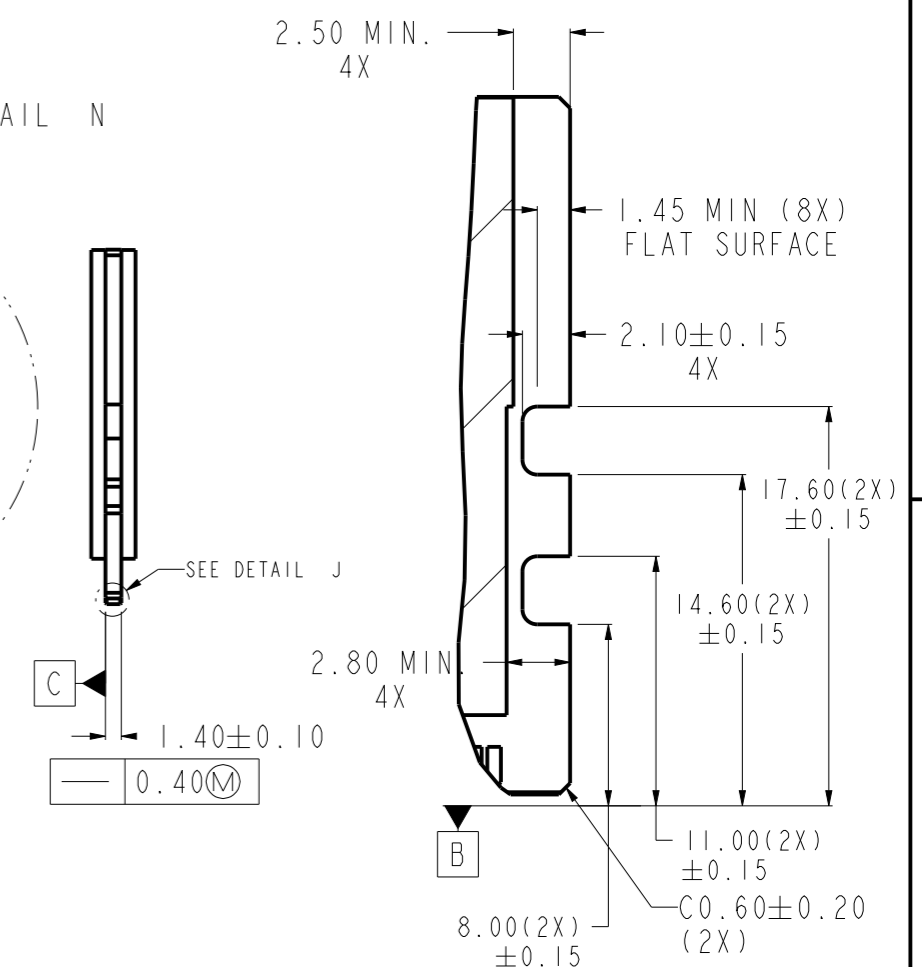
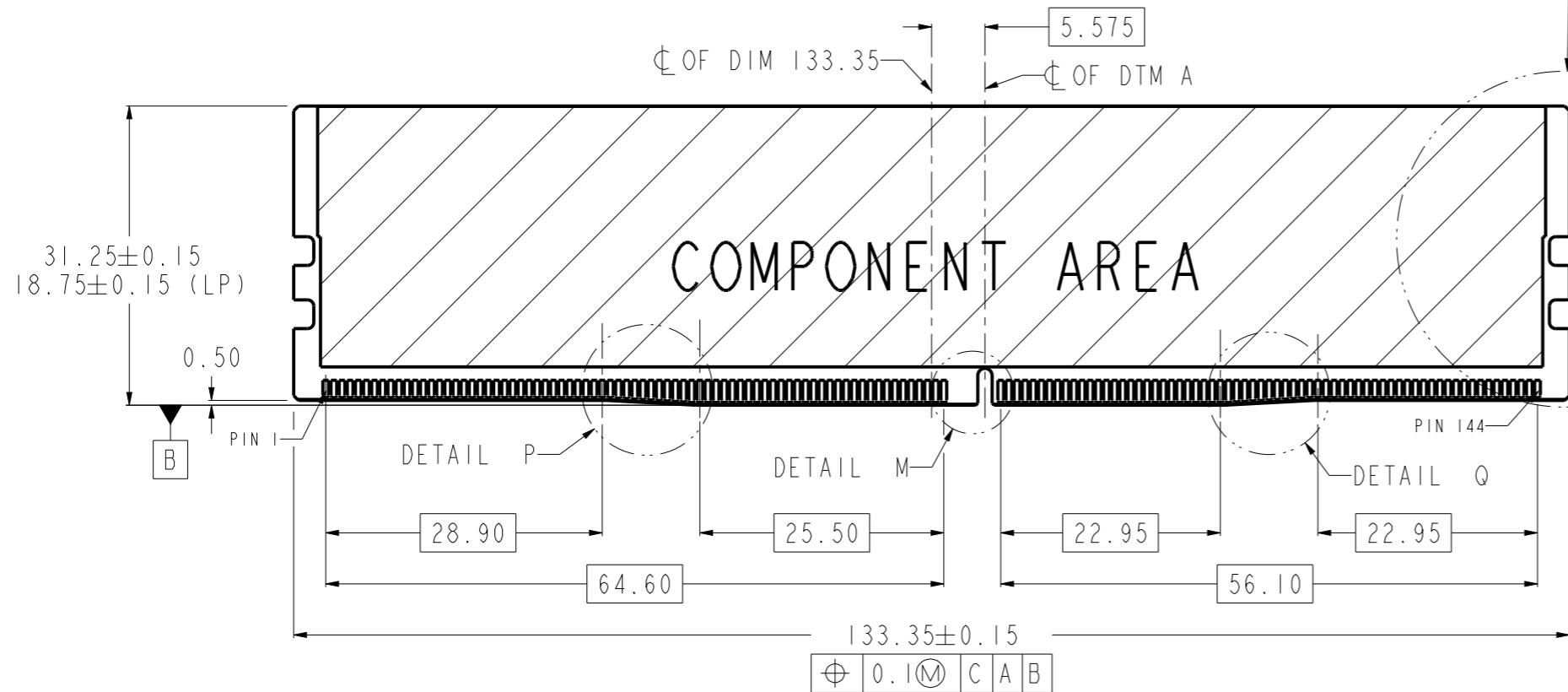


spec ref	-	dr	Nickor Zuo	2018/01/30	projection	mm	size	A3	scale	2:1	
tolerance std	ISO 406 ISO 1101	eng	Cong-Lin Zhao	2026/05/20			ecn no	ELX-DG-290351-1			
TOLERANCES UNLESS OTHERWISE SPECIFIED		chr	-	-			rel level	P Released			
surface	linear	appr	Breeze Lv	2026/05/20	product family	-	Amphenol FCI		DDR4 288 PIN DIMM CONNECTOR SMT TERMINATION	dwg no 10145891	rev P
ISO 1302	angular			cat. no.	-	Product - Customer Drw		sheet 1 of 5			

DDR4 MODULE
MORE INFORMATION REFER TO JEDEC MO-309

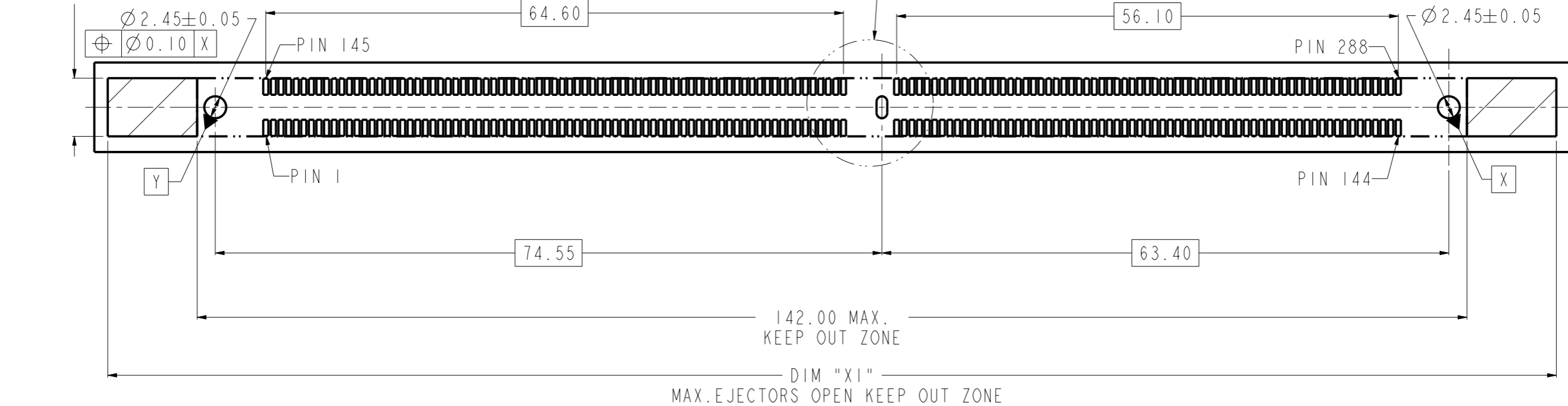


spec ref	-	dr	Nickor Zuo	2018/01/30	projection	mm	size	A3	scale	3:2	
tolerance std	ISO 406 ISO 1101	eng	Cong-Lin Zhao	2026/05/20		mm	ecn no	ELX-DG-290351-1			
surface	linear	chr	-	-			rel level	Released			
ISO 1302	angular	appr	Breeze Lv	2026/05/20	product family	-	Amphenol FCI				
					DDR4 288 PIN DIMM CONNECTOR		dwg no	10145891		rev	P
					SMT TERMINATION		Product - Customer Drw		sheet 2 of 5		

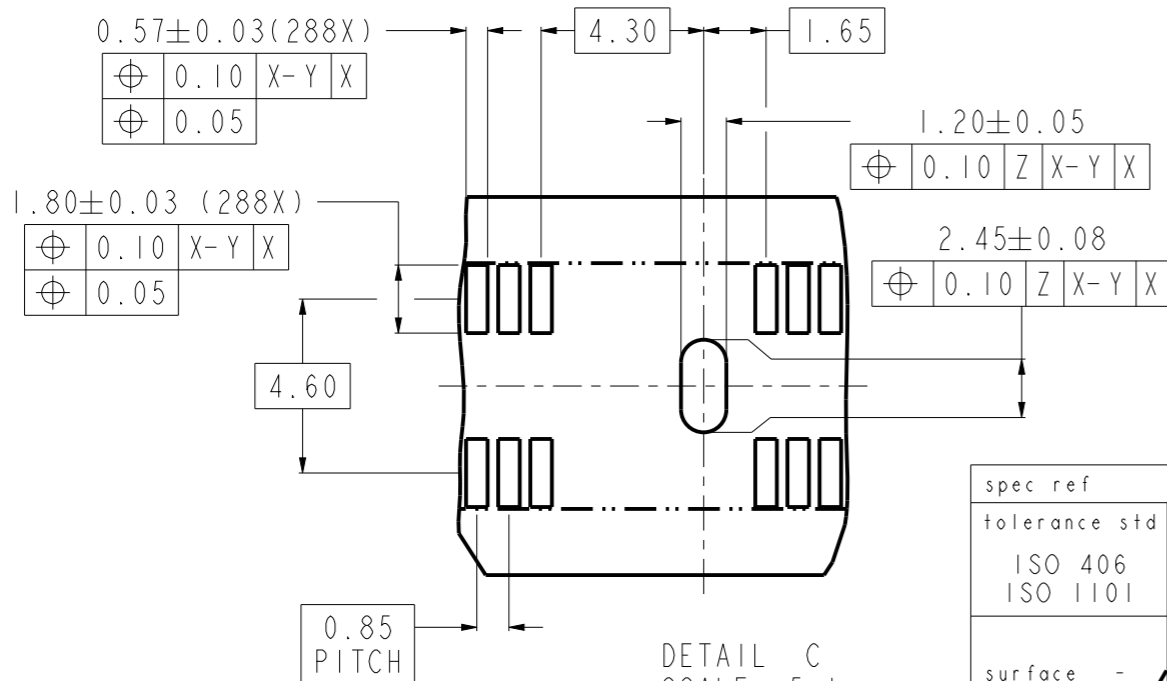
© 2020 Amphenol Corporation
Amphenol FCI

RECOMMENDED PCB LAYOUT
MORE INFORMATION REFER TO JEDEC SO-017

6.50 MAX.
KEEP OUT ZONE



THICKNESS
1.6~3.2mm



ADDITIONAL NOTES:

1. RECOMMENDED STENCIL THICKNESS IS NOT LESS THAN 0.15mm

spec ref	-	dr	Nickor Zuo	2018/01/30	projection	mm	size	A3	scale	2:1	
tolerance std	ISO 406 ISO 1101	eng	Cong-Lin Zhao	2026/05/20			ecn no	ELX-DG-290351-1			
surface	ISO 1302	chr	-	apppr			Breeze Lv	2026/05/20	product family	-	rel level
	linear	0.X	±0.30	Amphenol FCI		DDR4 288 PIN DIMM CONNECTOR		10145891		rev	P
	angular	0°	±2°							cat. no.	-

PRODUCT PART NUMBER

10145891 -

ADDITIONAL REQUIREMENTS

0: RoHS COMPLIANT

HOLD DOWNS CONFIGURATIONS

- 0: 3 FORKLOCKS, LENGTH "L"=4.00±0.25
- 1: 3 FORKLOCKS, LENGTH "L"=2.50±0.25
- 3: 3 SOLDER TABS, LENGTH "L"=2.00±0.25
- 5: 2 SOLDER TABS AT BOTH END (LENGTH "L"=2.00±0.25)
+1 FORKLOCK AT MIDDLE (LENGTH "L"=2.50±0.25)
- 6: 3 SOLDER TABS, LENGTH "L"=1.50±0.25

MYLAR, CAP

- 0. WITH 30MM LENGTH MYLAR
- 1. WITHOUT MYLAR AND CAP
- 2. WITH CAP

HOUSING COLOR

- 0: NATURAL
- 1: BLACK
- 2: BLUE

EJECTOR TYPE

CODE	COLOR	DIM "X1"	DIM "X2"	FIGURE	PACKAGE
0	NATURAL	157	146		24 PCS/HARD TRAY
1	BLACK				
2	BLUE				
J	NATURAL				
K	BLACK				
B	BLUE				
C	NATURAL				
D	BLACK				
G	NATURAL				
H	BLACK				

CONTACT AREA PLATING

CODE	CONTACT AREA
11LF	15u" MIN. GOLD
13LF	30u" MIN. GOLD

NOTES:

1. MATERIALS:
HOUSING: HIGH PERFORMANCE RESINS, GLASS FIBER FILLED, UL94 V-0 RATED.
EJECTOR: HIGH PERFORMANCE RESINS, GLASS FIBER FILLED, UL94 V-0 RATED.
TERMINAL: COPPER ALLOY
FORKLOCK: COPPER ALLOY
SOLDER TAB: COPPER ALLOY
2. STENCIL THICKNESS IS NOT LESS THAN 0.15mm.
3. DATE CODE "MMDDYYL", MMDDYY IS ASSEMBLY DATE, L IS FCI PRODUCTION LINE.
4. SPECIFICATION:
PRODUCTION SPECIFICATION: FCI GS-12-1092.
PACKAGE SPECIFICATION: FCI GS-14-2267.
APPLICATION SPECIFICATION: FCI GS-20-0353.
5. LEAD FREE PRODUCT MEETS EUROPEAN UNION DIRECTIVES AND OTHER COUNTRY REGULATIONS AS DESCRIBED IN FCI GS-22-008.
6. THIS PRODUCT WILL WITHSTAND EXPOSURE TO 260°C PEAK TEMPERATURE FOR 10 SECONDS IN REFLOW SOLDERING APPLICATION.

spec ref	-	dr	Nickor Zuo	2018/01/30	projection		mm	size	A3	scale	1:1
tolerance std	ISO 406 ISO 1101	eng	Cong-Lin Zhao	2026/05/20	chr	-		ecn no	ELX-DG-290351-1	rel level	Released
surface	linear	appr	Breeze Lv	2026/05/20	product family	-		dwg no	10145891	rev	P
ISO 1302	angular							cat. no.	-	Product - Customer Drw	sheet 4 of 5

© 2020 Amphenol Corporation
Amphenol FCI

PRODUCT PART NUMBER

10145891 -

ADDITIONAL REQUIREMENTS

1: LOW HALOGEN COMPLIANT

HOLD DOWNS CONFIGURATIONS

- 0: 3 FORKLOCKS, LENGTH "L"=4.00±0.25
- 1: 3 FORKLOCKS, LENGTH "L"=2.50±0.25
- 3: 3 SOLDER TABS, LENGTH "L"=2.00±0.25
- 5: 2 SOLDER TABS AT BOTH END (LENGTH "L"=2.00±0.25)
+1 FORKLOCK AT MIDDLE (LENGTH "L"=2.50±0.25)
- 6: 3 SOLDER TABS, LENGTH "L"=1.50±0.25

MYLAR, CAP AND PACKAGE

- 0. WITH 30MM LENGTH MYLAR, HARD TRAY PACKAGE
- 1. WITHOUT MYLAR AND CAP, HARD TRAY PACKAGE
- 2. WITH CAP, HARD TRAY PACKAGE
- 3. WITH 90MM LENGTH MYLAR, HARD TRAY PACKAGE

HOUSING COLOR

- 0: NATURAL
- 1: BLACK
- 2: BLUE
- 3: YELLOW

EJECTOR TYPE

CONTACT AREA PLATING

CODE	CONTACT AREA
11LF	15u" MIN.GOLD
13LF	30u" MIN.GOLD
18LF	18u" MIN.GOLD

NOTES:

1. MATERIALS:
HOUSING: HIGH PERFORMANCE RESINS, GLASS FIBER FILLED, UL94 V-0 RATED.
EJECTOR: HIGH PERFORMANCE RESINS, GLASS FIBER FILLED, UL94 V-0 RATED.
TERMINAL: COPPER ALLOY
FORKLOCK: COPPER ALLOY
SOLDER TAB: COPPER ALLOY
2. STENCIL THICKNESS IS NOT LESS THAN 0.15mm.
3. DATE CODE "MMDDYYL", MMDDYY IS ASSEMBLY DATE, L IS FCI PRODUCTION LINE.
4. SPECIFICATION:
PRODUCTION SPECIFICATION: FCI GS-12-1092.
PACKAGE SPECIFICATION: FCI GS-14-2267.
APPLICATION SPECIFICATION: FCI GS-20-0353.
5. LEAD FREE PRODUCT MEETS EUROPEAN UNION DIRECTIVES AND OTHER COUNTRY REGULATIONS AS DESCRIBED IN FCI GS-22-008.
6. THIS PRODUCT WILL WITHSTAND EXPOSURE TO 260°C PEAK TEMPERATURE FOR 10 SECONDS IN REFLOW SOLDERING APPLICATION.

CODE	COLOR	DIM "X1"	DIM "X2"	FIGURE	PACKAGE
M	NATURAL	157	146		24 PCS/TRAY 10094882-02-012B (10145891-1301M11LF) (10145891-1303M11LF)
L	BLACK				24 PCS/TRAY (10145891-1011L13LF) (10145891-1001L13LF)
J	NATURAL				32 PCS/HARD TRAY (136mm WIDTH)
K	BLACK				
B	BLUE				
C	NATURAL				
D	BLACK	32 PCS/HARD TRAY (150mm WIDTH)			
0	NATURAL				
1	BLACK	24 PCS/TRAY			
3	NATURAL	153	143		24 PCS/TRAY
4	BLACK				
5	NATURAL	155	144		28 PCS/TRAY
6	BLACK				

spec ref	-	dr	Nickor Zuo	2018/01/30	projection		mm	size	A3	scale	1:1
tolerance std	ISO 406 ISO 1101	eng	Cong-Lin Zhao	2026/05/20	chr	-		ecn no	ELX-DG-290351-1		
	TOLERANCES UNLESS OTHERWISE SPECIFIED	appr	Breeze Lv	2026/05/20	product family	-		rel level	Released		
surface	linear	0.X	±0.30	Amphenol FCI		DDR4 288 PIN DIMM CONNECTOR		10145891		rev P	
		0.XX	±0.20								
		0.XXX	±0.10								
	angular	0°	±2°	cat. no.	-	Product - Customer Drw		sheet 5 of 5			

Amphenol FCI

© 2020 Amphenol Corporation